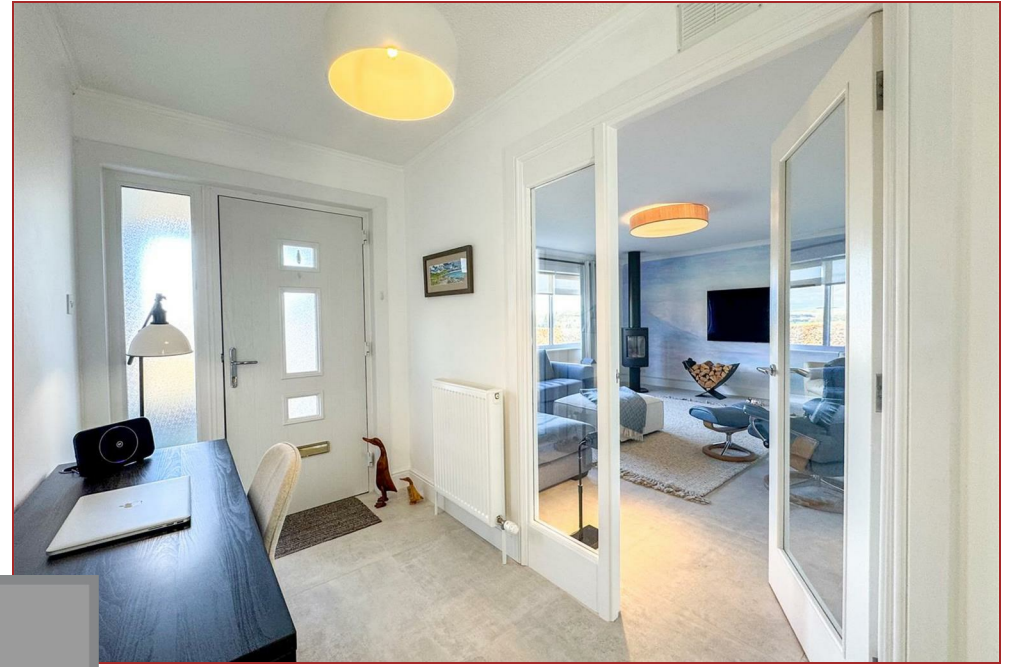




RESIDENCE

New Trows Road, Lesmahagow, ML11 0JS

www.residenceestateagents.co.uk



RESIDENCE





3 Bedrooms | 2 Public Rooms | 2 Bathrooms

Kerswell is a beautiful 3-bedroom detached bungalow nestled in the picturesque rural setting of New Trows Road, Lesmahagow. This stunning property is situated on a substantial plot, surrounded by views of the countryside. The current owners have thoughtfully upgraded the home, enhancing both its aesthetics and functionality.

As you approach the property, a spacious private driveway accommodates multiple vehicles, along with a detached garage. The front and side entrances feature modern composite doors, welcoming you into a bright and stylish interior.

Upon entering, you'll immediately notice the elegance of Porcelanosa Italian tiles that flow throughout the property, with the exception of the well-appointed family bathroom and spacious bedrooms. Fresh white wooden skirting and doors add a touch of contemporary charm.

The large, front-facing lounge boasts a stunning freestanding designer Jotul Log Burner and stunning views from the large front facing window.

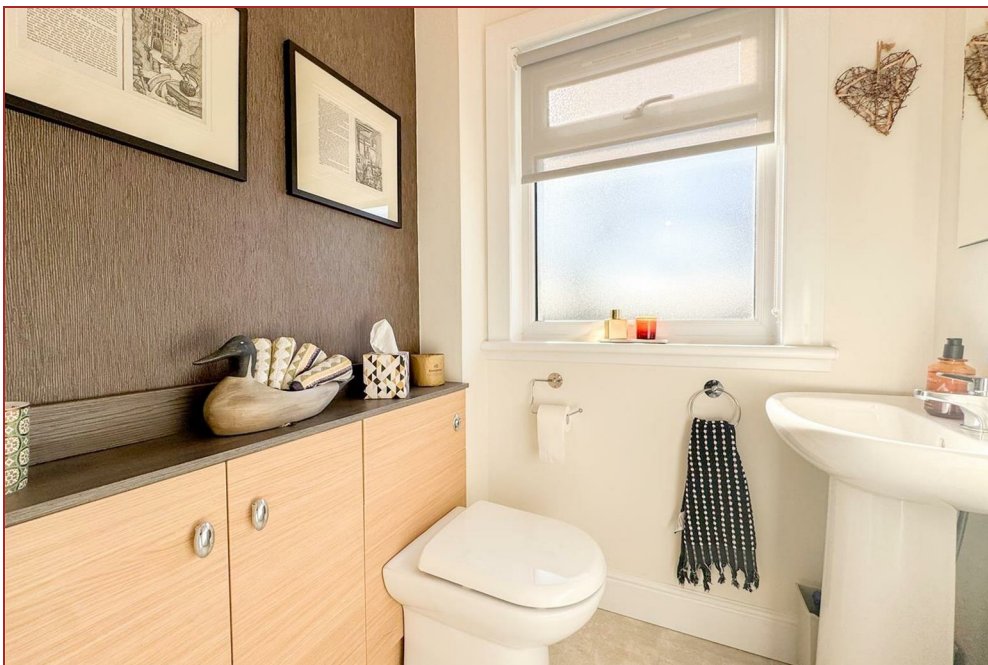
At the heart of the home is the exquisite custom kitchen/diner. The space is equipped with sleek white quartz worktops that match beautifully with the utility room and comes complete with top-of-the-line appliances including a built-in NEF hob with downdraft, AEG oven, microwave, warming drawer and integrated fridge/freezer. Access to the rear garden through the sliding patio doors, providing seamless indoor-outdoor living.

The utility room serves as a practical addition, offering access to the side of the property as well as a modern WC.

The bungalow features a lovely 4-piece family bathroom and three spacious double bedrooms. One bedroom impressively boasts French doors that open onto the rear garden, while the master includes generously size built in wardrobes.

Externally, the expansive rear garden features a wonderful patio area, complete with outdoor sockets and taps along with a beautiful fully insulated outdoor sunroom.

Air Source Mitsubishi Heat Pump was installed just 4 years ago to the home



1184.00 sq ft | EER = E



RESIDENCE





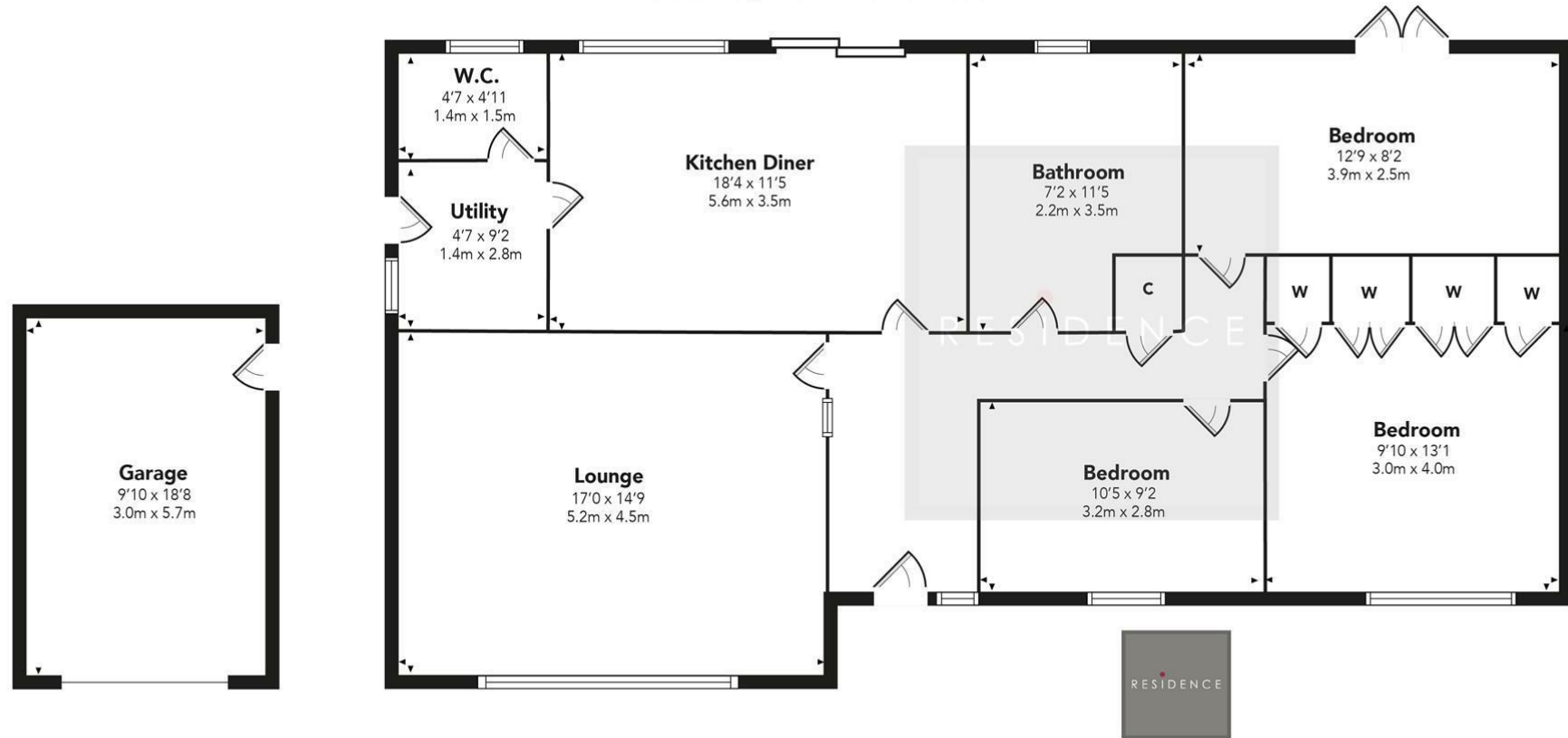
RESIDENCE



Viewing by appointment with Residence Hamilton

T: 01698 444333 | E: hamilton@residenceestateagents.co.uk | A: 34 Cadzow Street, Hamilton, ML3 6DG

Kersewel, New Trows Road



Floor Plan measurements are approximate and are for illustrative purposes only.
While we do not doubt the floor plans accuracy, we make no guarantee, warranty or representation as to the accuracy and completeness of the floor plan. You or your advisors should conduct a careful, independent investigation of the property to determine to your satisfaction as to the suitability of the property for your space requirements.

Produced by Plush Plans Ltd

We believe these details to be accurate; however, they do not form any part of a contract. Fixtures and fittings are not included unless specified in the enclosed. Photographs are for general information and it must not be inferred that any item is included for sale with the property. All distances and measurements are approximate. Floorplans may not be to scale and are for illustration purposes only.