



RESIDENCE

1 Hunston Avenue, Hamilton, ML3 9FP

www.residenceestateagents.co.uk



Viewing by appointment with Residence Hamilton

T: 01698 444333 | E: hamilton@residenceestateagents.co.uk | A: 34 Cadzow Street, Hamilton, ML3 6DG



RESIDENCE





5 Bedrooms | 2 Public Rooms | 3 Bathrooms

This impressive Cala built family detached villa is of the "Logan" house type and has been finished to an exceptionally high standard throughout and enjoys an excellent position within established, landscaped gardens with monobloc driveway and double garage.

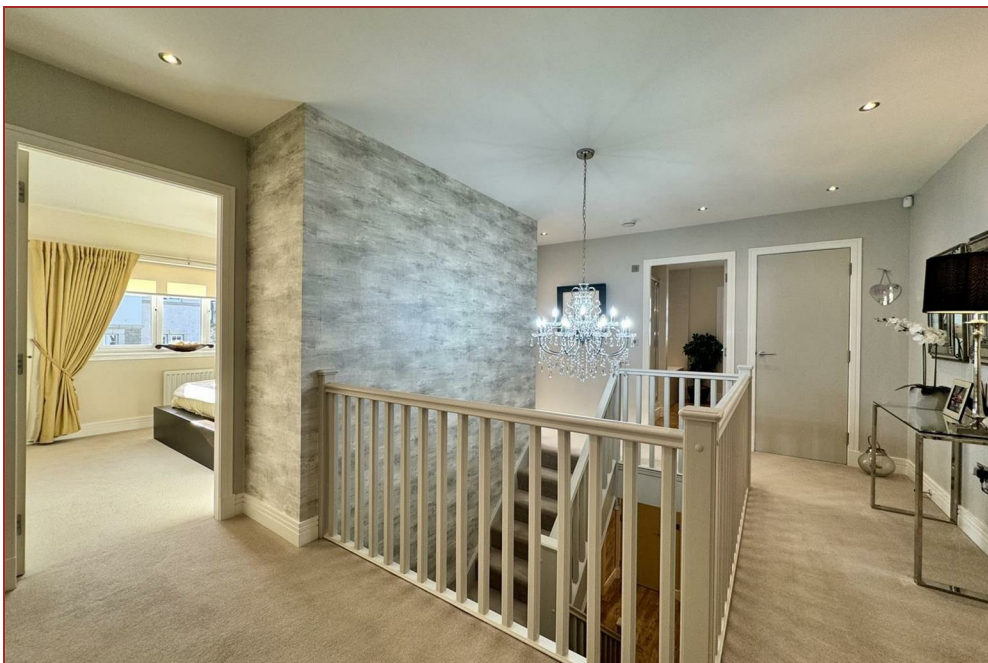
This fantastic family home offers a spacious and versatile layout of apartments that are in walk in condition.

The extensive accommodation comprises, entrance vestibule, welcoming reception hallway with storage and staircase to the upper floor. Cloaks/wc with 2-piece suite, formal lounge with aspects to front and side, a large and impressive breakfasting kitchen with integrated appliances and open dining/family room with French doors to the rear gardens. Utility room with sink and plumbing for white goods. On the upper floor there is a large galleried landing which leads to the properties 5 bedrooms with 2 en-suites and the great size family bathroom.

Features of the property include gas central heating and double glazing. The property has landscaped gardens offering a sizable and decorative patio and artificial lawn to the rear as well as a monobloc driveway and double garage.

The enclosed floor plan shall provide a detailed layout of this outstanding property however we recommend inspection to appreciate the scale of accommodation and standard of internal finish on offer.

Hamilton is home to excellent shopping facilities, sports amenities and clubs including golf courses, swimming pools, gymnasiums and parks. There are several highly regarded schools nearby and the property is also in close proximity to the prestigious Hamilton College. There are a wide variety of restaurants, bistros and pubs providing excellent choice.



2314.00 sq ft | EER = C





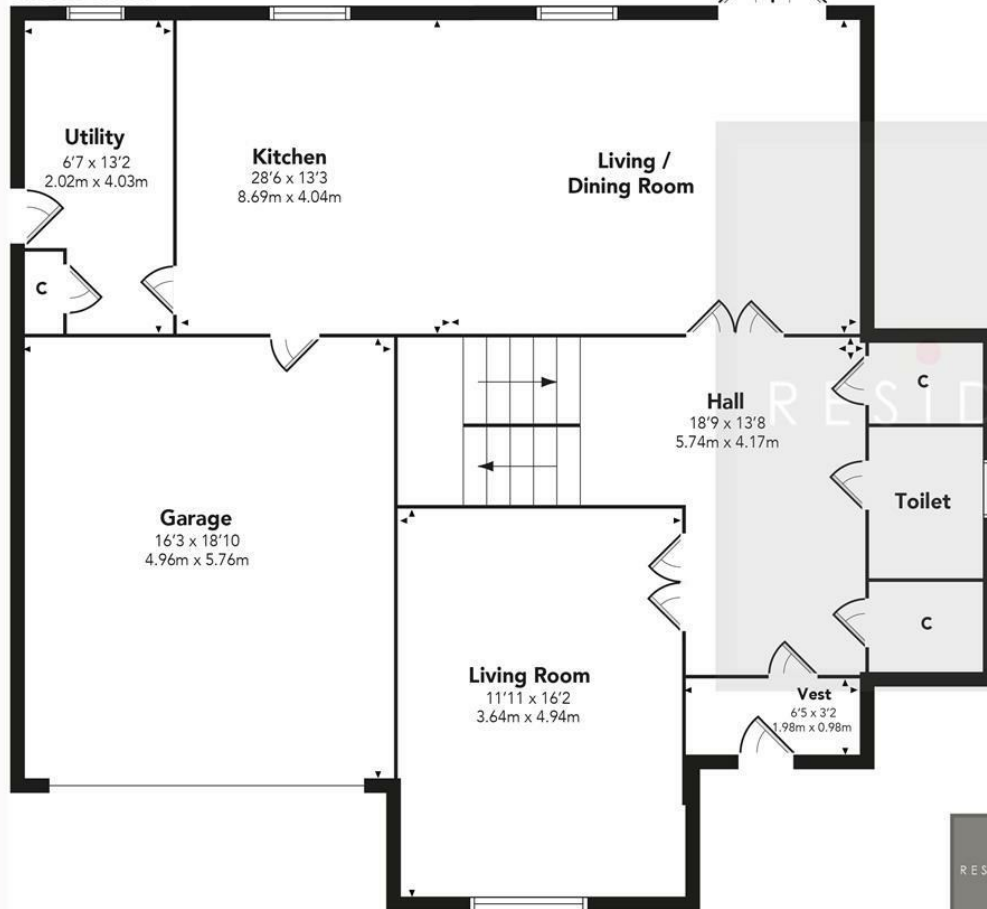
RESIDENCE





Hunston Ave

GROUND FLOOR



FIRST FLOOR



RESIDENCE

Floor Plan measurements are approximate and are for illustrative purposes only. While we do not doubt the floor plans accuracy, we make no guarantee, warranty or representation as to the accuracy and completeness of the floor plan. You or your advisors should conduct a careful, independent investigation of the property to determine to your satisfaction as to the suitability of the property for your space requirements.

Produced by Plush Plans Ltd

We believe these details to be accurate; however, they do not form any part of a contract. Fixtures and fittings are not included unless specified in the enclosed. Photographs are for general information and it must not be inferred that any item is included for sale with the property. All distances and measurements are approximate. Floorplans may not be to scale and are for illustration purposes only.