



RESIDENCE

12 Brogan Crescent, Motherwell, ML1 3HR

www.residencestateagents.co.uk



2 Bedrooms | 1 Public Rooms | 1 Bathrooms

A fantastic semi-detached bungalow with generous gardens located within a popular and well-established area of Motherwell.

There is terrific accommodation with two well-proportioned bedrooms to the front and a large bright and airy lounge/dining area.

Offering bright, airy and well-proportioned rooms, this lovely family home in full comprises a reception hall, an impressive sized lounge/dining, a galley-style kitchen, a family shower room, two well proportioned bedrooms and cupboard space.

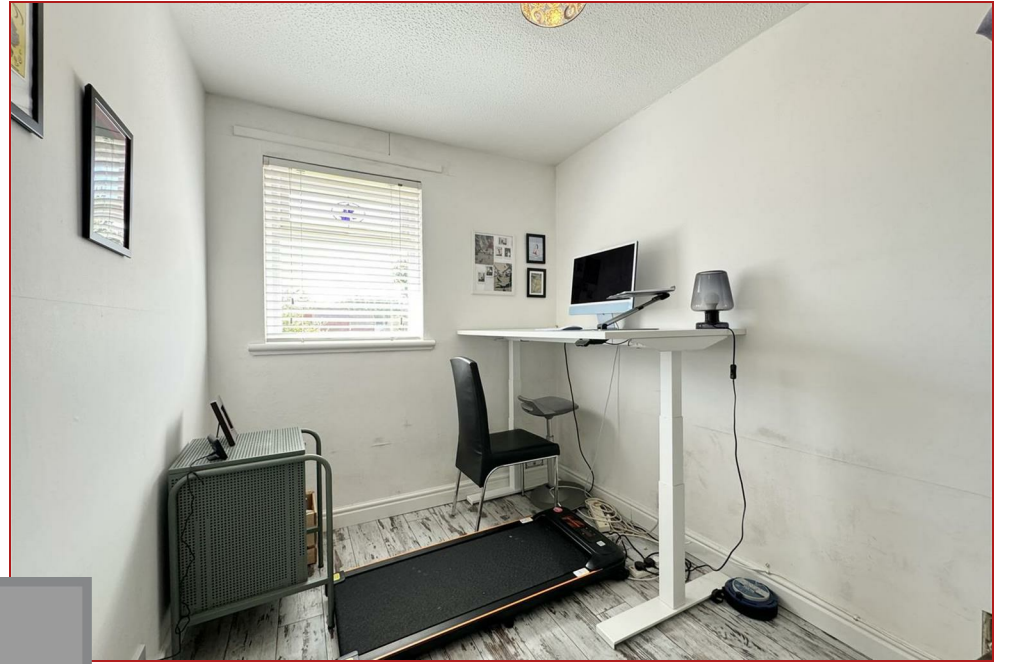
The floor plan shall provide you with a detailed layout of this well laid-out and comfortable home. However, we recommend viewing to appreciate the convenient setting that's on offer.

The front of the property has a well manicured lawn, whilst the enclosed rear garden has a patio area and lawn. There is a large driveway to the side of the property for several cars.

Motherwell provides a wide choice of shopping facilities and several highly regarded schools. The area has a wide choice of sports facilities, such as golf, tennis, bowling, swimming and country parks including the nearby Strathclyde Country Park and Chatelherault Parks. For those commuting by bus or train there are excellent and regular links to the surrounding towns and cities including Glasgow and Edinburgh.



sq ft | EER =



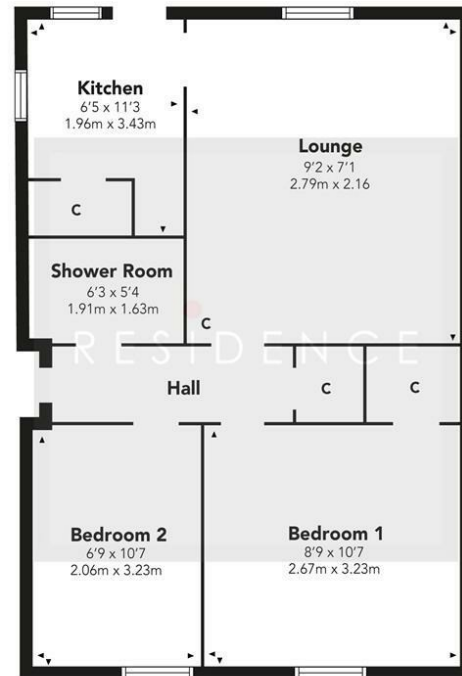
RESIDENCE



Viewing by appointment with Residence Hamilton

T: 01698 444333 | E: hamilton@residenceestateagents.co.uk | A: 34 Cadzow Street, Hamilton, ML3 6DG

Brogan Crescent



Floor Plan measurements are approximate and are for illustrative purposes only. While we do not doubt the floor plans accuracy, we make no guarantee, warranty or representation as to the accuracy and completeness of the floor plan. You or your advisors should conduct a careful, independent investigation of the property to determine to your satisfaction as to the suitability of the property for your space requirements.

Produced by Plush Plans Ltd

We believe these details to be accurate; however, they do not form any part of a contract. Fixtures and fittings are not included unless specified in the enclosed. Photographs are for general information and it must not be inferred that any item is included for sale with the property. All distances and measurements are approximate. Floorplans may not be to scale and are for illustration purposes only.