



The Hampton 3 bedroom detached house

Kitchen

- Appliances (double oven, fridge freezer, dishwasher, 4 ring-gas hob, cooker hood)
- Selection of different colour doors and worktops.
- Low energy lighting fitted under wall units and down lighters.
- Brushed chrome switches.

Bathroom

- Vanity unit with sink, toilet, bath with rainwater effect shower and fixed screen, chrome towel rail.
- Tiled wet areas with a selection of tiles.
- Down lights.

Ensuite

- Shower cubicle with rainwater effect shower, vanity unit with sink, toilet, chrome towel rail.
- Tiled wet areas with a selection of tiles.
- Down lights.

(Floorplans on reverse)

Internal decorating and finishing

- Floor coverings throughout; choice of either carpet or vinyl flooring
- Contemporary staircase painted satin white.
- All rooms decorated in white.
- Torus cut skirting and architrave painted satin white.
- Oak veneer internal doors.
- Brushed chrome ironmongery including hinges.

Heating system

- Fully integrated SMART system.
- Underfloor heating ground floor.
- Highly efficient Band A gas fired central heating with Bosch-Worcester boiler.
- Central heating via thermostatically controlled radiators upstairs.

External

- Outside tap and powerpoint.
- Block paved/Tarmac drives.
- Turfed back garden.
- 3 rows of slabs to gate.
- Front gardens including shrubs and planting (where applicable)
- Picket fencing (where applicable)

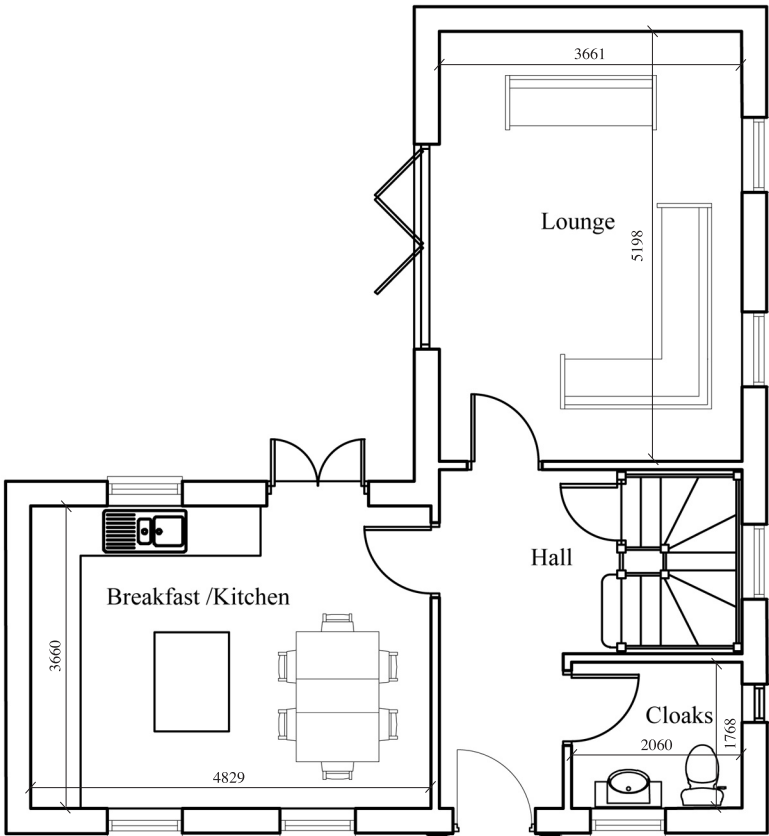


Wilcox Homes

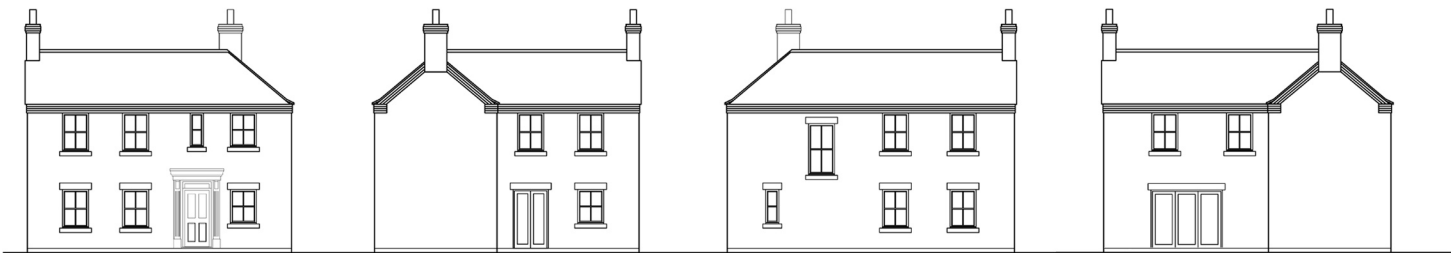
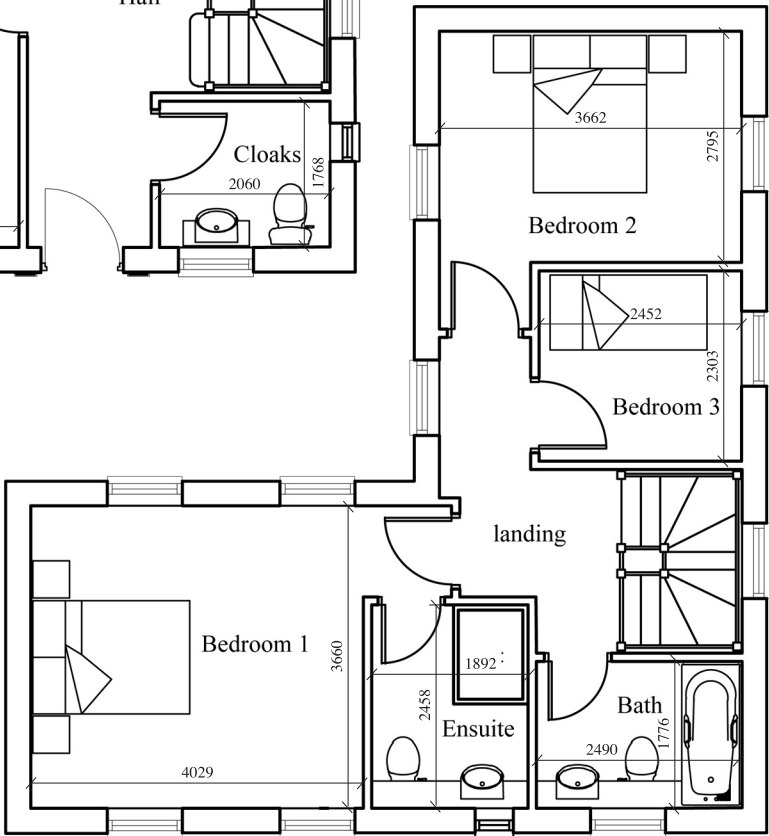
Building Exceptional New Homes in Lincolnshire

The Hampton 3 bedroom detached house floorplans

GROUND FLOOR



FIRST FLOOR



ELEVATIONS



Wilcox Homes

Tel: 01526 800 427 Email: sales@wilcoxhomes.net www.wilcoxhomes.net



Some items and positions could vary from those indicated on this floorplan. Please refer to our Sales Advisor for details of your selected plot. The external image is computer generated and external finishes, landscaping and configuration may vary from plot to plot. Please refer to our Sales Advisor for further details. All dimensions are approximate and should not be used for carpet sizes, appliance space or furniture. Furniture is not to scale and all positions are indicative. Consequently these particulars should be treated as a general guidance only and do not constitute a contract, part of a contract or warranty.