



Windsor Close, Sleaford  
£297,500



3



1



2



Freehold

 3  1  2

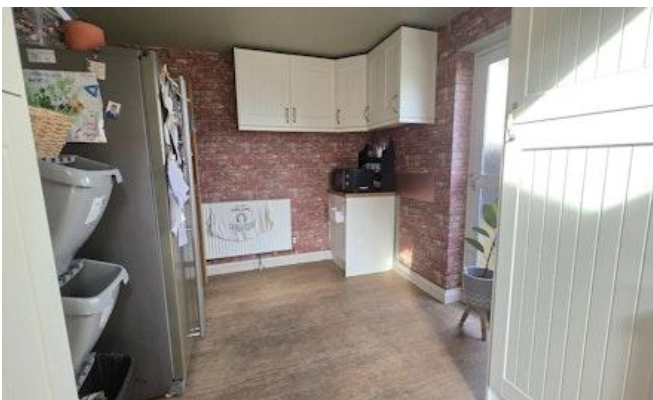
---

## Key Features

- Extended Detached House
- Three Double Bedrooms
- Open Plan Kitchen Diner with Velux Windows
- Well Presented Throughout
- Garage Converted to a Fourth Bedroom/Hobby Room
- Sought After Estate Location







On a sought after quiet cul-de-sac location is this well presented Extended Three Double Bedroom Detached Home. To now offer a fantastic open plan kitchen diner to rear, the garage has also been converted to a Fourth Bedroom/Hobby Room, further comprising; Entrance Hall, Lounge, Cloakroom, Three Double Bedrooms and Family Shower Room. With ample parking to front, the rear garden offers a generous sized seating area with pergola and further area and connection for a Hot Tub. A viewing is highly recommended.

### Entrance Hall

With part glazed Entrance Door.

### Lounge

6.09m x 3.65m (20'0" x 12'0")

With TV and BT points, stairs leading to 1st floor with storage cupboard under and radiators.

### Kitchen Diner

6.57m x 6.4m (21'7" x 21'0")

Extension to rear to now offer a beautiful open plan Kitchen Diner with velux windows and French Door to rear garden. The Kitchen area comprising a range of base and eye level units with work surface over, one and a half sink with mixer tap and drainer, freestanding oven with gas hob over, central island with storage under, integrated dishwasher, space and plumbing for a washing machine, further area to side of Lounge with space for American Style Fridge Freezer and storage units, door to side of property.

### Bedroom Four/Office

5.51m x 2.58m (18'1" x 8'6")

Currently used as a storage/hobby room, with French doors to front and radiator.

### Cloakroom

With low level wc, hand wash basin, heated towel rail and window to front aspect.

### Landing

With stairs leading from Lounge, airing cupboard and access to loft space.

### Bedroom One

4.53m x 2.77m (14'11" x 9'1")

With built in wardrobes, window to rear aspect and radiator.

### Bedroom Two

3.01m x 3.65m (9'11" x 12'0")

With window to rear aspect and radiator.

### Bedroom Three

2.46m x 3.68m (8'1" x 12'1")

With window to front aspect and radiator.

### Shower Room

Three piece suite comprising large double walk in shower unit, low level wc, hand wash basin, heated towel rail, window to front aspect and radiator.



## Outside

The front of the property offers a large double driveway with parking for at least 6 vehicles, with side aspect to rear.

The rear has been landscaped to offer a covered seating area leading from the open plan Kitchen Diner, space and electric connection for a Hot Tub in the rear corner, generous size shed, further area laid to gravel, outside tap and lighting and timber fence surround.

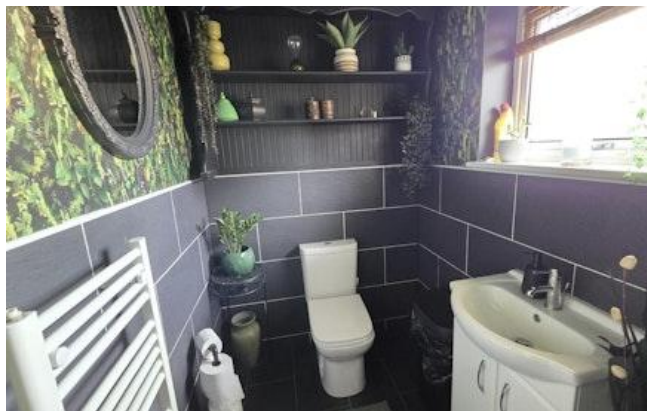
## Agents Note

These are draft particulars awaiting vendor approval.

These particulars are issued in good faith but do not constitute representations of fact or form part of any offer or contract. The matters referred to in these particulars should be independently verified by prospective buyers or tenants. Neither Newton Fallowell nor any of its employees or agents has any authority to make or give any representation or warranty whatever in relation to this property.

## Financial Services

As part of our continued commitment to providing the best advice to all our clients we work closely with Mortgage Advice Bureau & part of our guaranteed commitment to our vendors is to establish the financial position of any offer received on their home. Whilst we offer FREE mortgage advice from any stage of the buying or selling process, we operate a mandatory qualification process on all offers prior to submission of any offer to our vendors. The mortgage advice bureau is regulated by the financial ombudsman and operate on an independent basis within our premises at 27 Southgate, Sleaford, NG34 7SY.







# Floorplan



WINDOSR CLOSE, SLEAFORD NG34 7NL

TOTAL FLOOR AREA: 1383 sq.ft. (128.5 sq.m.) approx.

Whilst every attempt has been made to ensure the accuracy of the floorplan contained herein, measurements of doors, windows, rooms and any other items are approximate and no responsibility is taken for any error, omission or mis-statement. This plan is for illustrative purposes only and should be used as such by any prospective purchaser. The services, systems and appliances shown have not been tested and no guarantee as to their operability or efficiency can be given.  
Made with Metropix i2025.



Newton Fallowell Sleaford

01529 309 209

sleaford@newtonfallowell.co.uk