



Museum Court, Lincoln



£150,000



Key Features

- One Bedroom
- Top Floor Apartment
- Cathedral Views
- Vaulted Ceilings
- Kitchen With Built in Appliances
- Secure Private Parking
- EPC Rating D
- Tenure: Leasehold





With a city centre location within minutes walking distance of the Uphill Area this top floor loft style apartment features a double height vaulted ceiling with full length roof light and enjoys views towards the Cathedral. This exclusive development has secure entry and parking with a lift to the accommodation. The property is well presented throughout with Juliette balcony style windows and comprises of entrance hall, lounge diner, kitchen with all built in appliances including dishwasher, fridge freezer and washer dryer, double bedroom and bathroom. The property would make an ideal first time or investment purchase.

Entrance

The property is entered via a secure gated intercom with a lift and stairs accessing the fourth floor.

Entrance Hall 9'4" x 3'2" (2.8m x 1m)

With built in airing cupboard.

Lounge Diner 14'2" x 17'6" (4.3m x 5.3m)

With wood flooring, electric heating, vaulted ceiling with roof light, Juliettes balcony windows and access through to the kitchen.

Kitchen 7'9" x 8'3" (2.4m x 2.5m)

With Juliette balcony window to the rear, range of base and eye level units with worktop, splashback, sink, integrated appliances including oven, hob with extractor, washer dryer, dishwasher and fridge freezer.

Bedroom 9'4" x 14'4" (2.8m x 4.4m)

With window to the front elevation and electric panel heater.

Bathroom 6'2" x 8'3" (1.9m x 2.5m)

With three piece suite comprising of panelled bath with mixer shower, wash basin and push button wc with tiled flooring and heated towel rail.

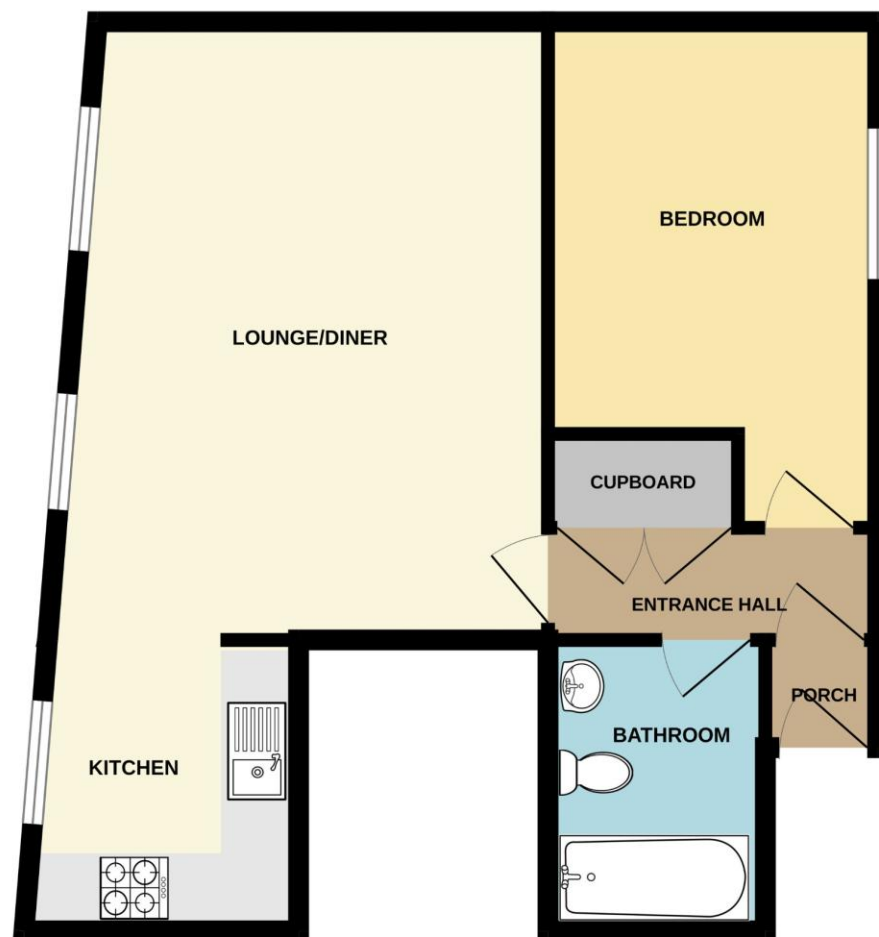
Outside

Adjacent to the front of the property is secure allocated parking.

Agent Note

These particulars are issued in good faith but do not constitute representations of fact or form part of any offer or contract. The matters referred to in these particulars should be independently verified by prospective buyers or tenants. Neither Newton Fallowell nor any of its employees or agents has any authority to make or give any representation or warranty whatever in relation to this property.

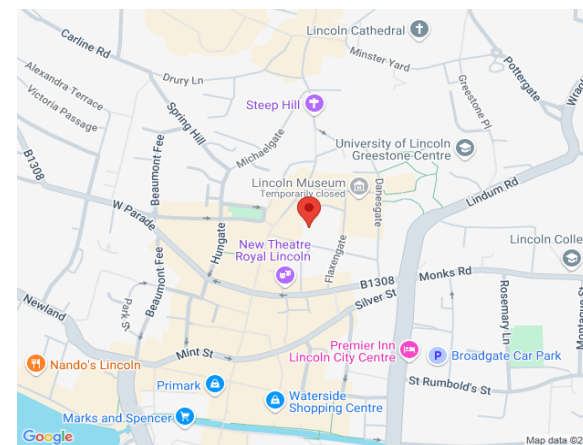




MUSEUM COURT LINCOLN LN2 1JB

TOTAL FLOOR AREA : 521 sq.ft. (48.4 sq.m.) approx.

Whilst every attempt has been made to ensure the accuracy of the floorplan contained here, measurements of doors, windows, rooms and any other items are approximate and no responsibility is taken for any error, omission or mis-statement. This plan is for illustrative purposes only and should be used as such by any prospective purchaser. The services, systems and appliances shown have not been tested and no guarantee as to their operability or efficiency can be given.
Made with Metropix ©2025



Score	Energy rating	Current	Potential
92+	A		
81-91	B		
69-80	C		75 C
55-68	D	63 D	
39-54	E		
21-38	F		
1-20	G		