



The Meadows, Langworth



2



1



1

£165,000

- Modern Mid Terraced House built in 2020
- Two Double Bedrooms
- Open Plan Living Kitchen
- Downstairs WC
- Upstairs Bathroom
- Garden & Off-Road Parking
- Freehold
- EPC rating B



Built in 2020 this well presented Mid Terraced House is situated in the village of Langworth to the northeast of Lincoln city. The accommodation comprises Open Plan Dining & Living Kitchen, Downstairs WC, Landing, Two Double Bedrooms and Bathroom. Outside an enclosed garden to the rear and off-road parking to the front of the property. The property benefits from Ground Source Heat Pump and uPVC Double Glazing.

Open Plan Living Kitchen

25'9" x 13'7" (7.8m x 4.1m)

Door and window to front aspect. Fitted with a range of wall and base units with work surface over and drainer sink unit. Integrated appliances include oven, hob, extractor hood and fridge freezer. Space and plumbing for washing machine and dishwasher. Radiator.

Living Area

French doors to rear aspect, radiator and two built in storage cupboards.

Downstairs WC

6'3" x 3'2" (1.9m x 1m)

Fitted with a low level wc, wash hand basin and radiator.

Landing

Loft access



Bedroom One

13'7" x 9'1" (4.1m x 2.8m)

Window to rear aspect and radiator.

Bedroom Two

13'7" x 9'6" (4.1m x 2.9m)

Window to front aspect and radiator.

Bathroom

6'10" x 6'6" (2.1m x 2m)

Fitted with a low level wc, wash hand basin and panelled bath with mains shower and glazed shower screen. Part tiled walls, chrome heated towel rail and extractor.

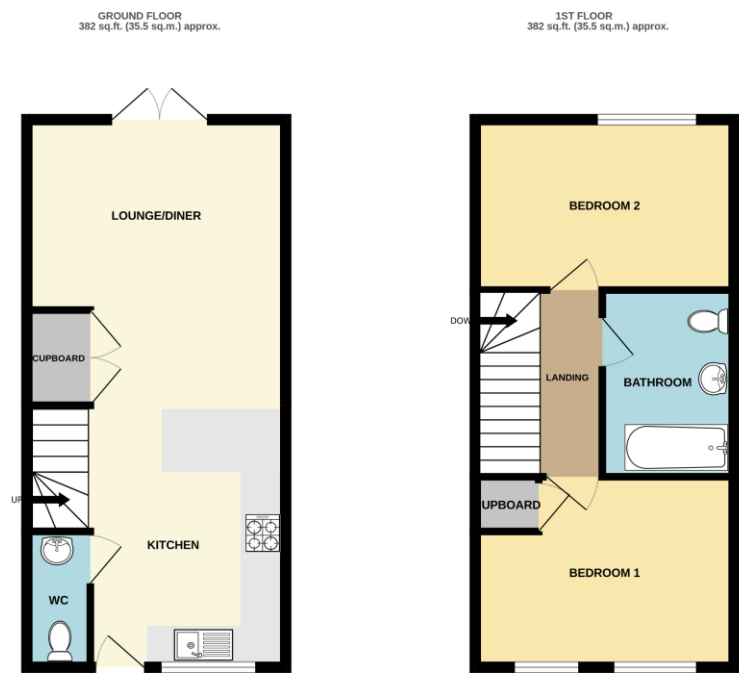
Outside

To the front there is an allocated parking space. To the rear is an enclosed lawned garden.

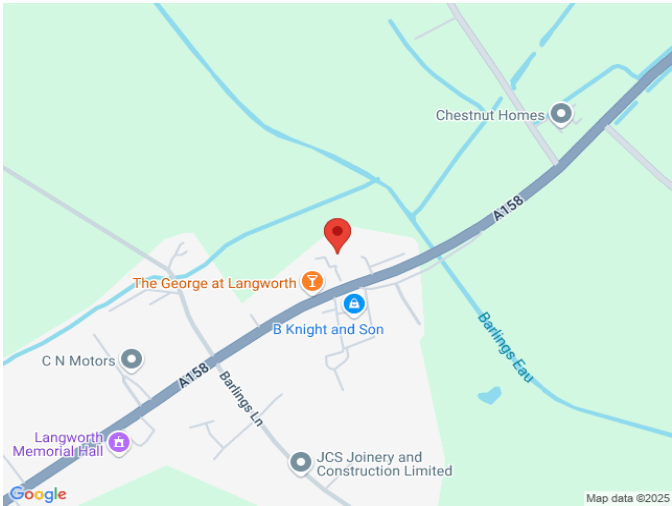
Agents Note

These particulars are issued in good faith but do not constitute representations of fact or form part of any offer or contract. The matters referred to in these particulars should be independently verified by prospective buyers or tenants. Neither Newton Fallowell nor any of its employees or agents has any authority to make or give any representation or warranty whatever in relation to this property.

Floorplan



4 THE MEADOWS, LANGWORTH, LINCOLN, LN3 5BJ
TOTAL FLOOR AREA : 764 sq.ft. (71.0 sq.m.) approx.
While every attempt has been made to ensure the accuracy of the floorplan contained here, measurements of doors, windows, rooms and any other items are approximate and no responsibility is taken for any error, omission or mis-statement. This plan is for illustrative purposes only and should be used as such by any prospective purchaser. The services, systems and appliances shown have not been tested and no guarantee as to their condition or efficiency can be given.
Made with Metagen 02/25



Score	Energy rating	Current	Potential
92+	A		101 A
81-91	B	87 B	
69-80	C		
55-68	D		
39-54	E		
21-38	F		
1-20	G		



Newton Fallowell Lincoln

01522 516590
lincoln@newtonfallowell.co.uk