



High Street, City Centre, Lincoln

 2  2  1

£160,000



Key Features

- Second Floor Apartment
- Two Bedrooms
- Two Shower Rooms
- City Centre Location
- Open Plan Living
- No Onward Chain
- EPC rating D
- Leasehold





Newton Fallowell are pleased to offer for sale, this second floor apartment located in Lincoln City Centre and within a short walk of the Cathedral Quarter of the city. The accommodation comprises: Communal Entrance, Entrance Hall, Open Plan Lounge/Diner/Kitchen, Two Bedrooms and Two Shower Rooms.

Entrance Hall

Door to side elevation, built-in cupboard and stairs to first floor.

Lounge/Kitchen 17'10" x 13'

Windows to front, radiator, range of base and eye level units with inset sink unit and built-in oven and hob.

Bedroom Two 10'8" x 7'7"

Window to rear, radiator and built-in wardrobe.

Shower Room

With radiator, wash basin, W.C and shower enclosure.

Bedroom One 12'9" x 12'8"

Two Velux windows, radiator and door to:

En-Suite

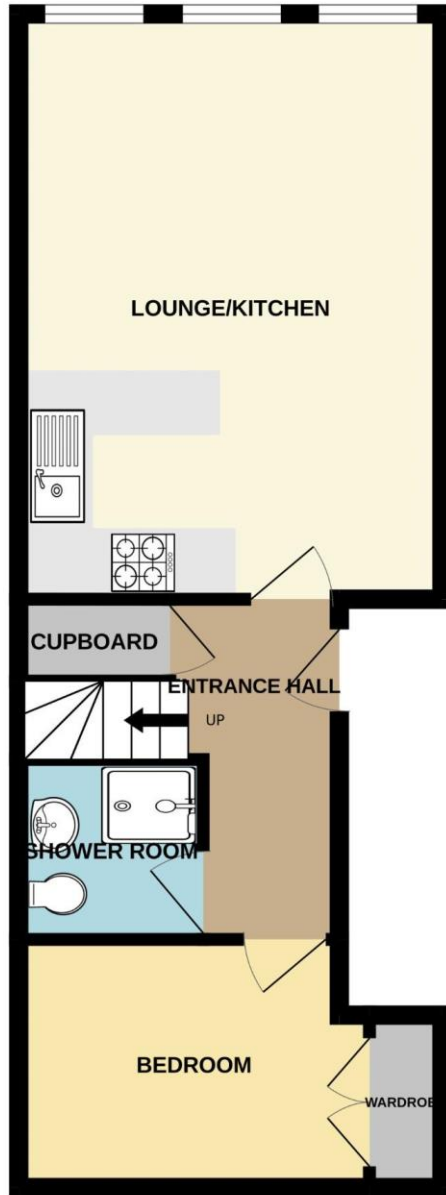
With radiator, wash basin, W.C and shower enclosure.

Agents Note

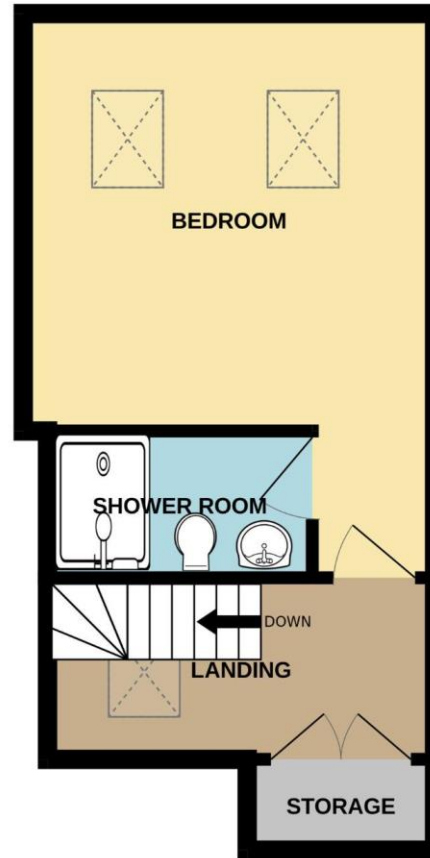
These particulars are issued in good faith but do not constitute representations of fact or form part of any offer or contract. The matters referred to in these particulars should be independently verified by prospective buyers or tenants. Neither Newton Fallowell nor any of its employees or agents has any authority to make or give any representation or warranty whatever in relation to this property.

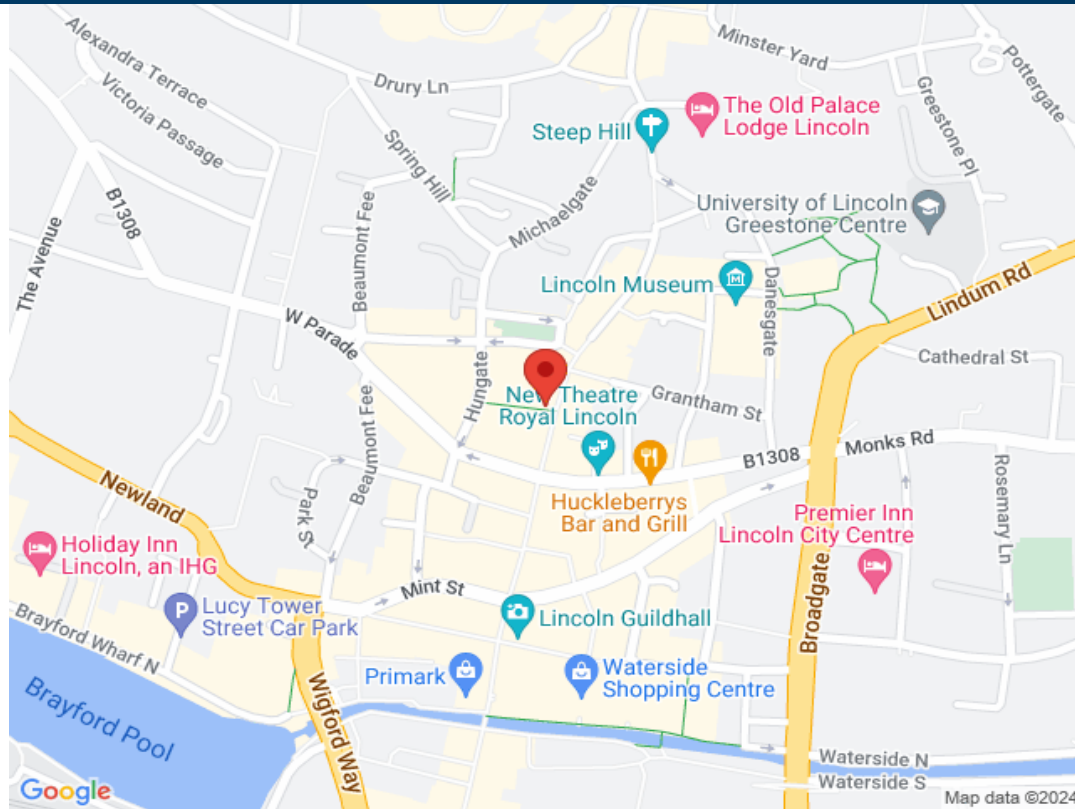


SECOND FLOOR



1ST FLOOR





Score	Energy rating	Current	Potential
92+	A		
81-91	B		
69-80	C		
55-68	D	67 D	67 D
39-54	E		
21-38	F		
1-20	G		

