

HUNTERS[®]

HERE TO GET *you* THERE



Camberwell Grove

SE5 8RH

£1,950 Per Calendar Month



One bed period conversion with private rear garden on Camberwell Grove.

Situated on the famous Camberwell Grove this well proportioned one bedder forms part of an imposing three storey Georgian House and benefits from a spacious separate reception with high ceilings, good sized double bedroom and modern fitted kitchen with a range of high specification integrated appliances.

The contemporary bathroom comes with both bath and shower fitting.

Accessed via the kitchen is a private low maintenance south west facing garden, the perfect summer entertaining space.

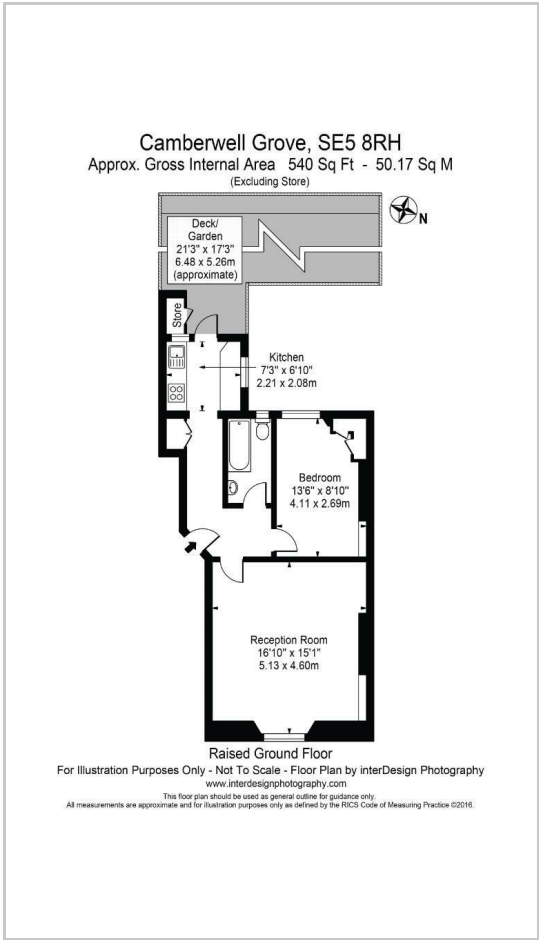
Minutes from excellent transport links including Denmark Hill overland station with easy access to the West End & City and Kings College hospital.



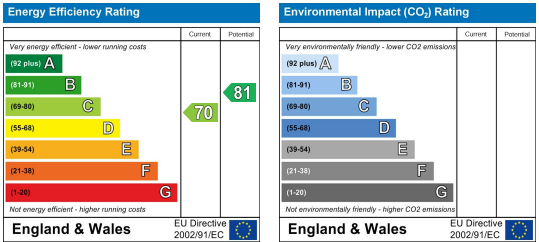
Area Map



Floor Plans



Energy Efficiency Graph



These particulars are intended to give a fair and reliable description of the property but no responsibility for any inaccuracy or error can be accepted and do not constitute an offer or contract. We have not tested any services or appliances (including central heating if fitted) referred to in these particulars and the purchasers are advised to satisfy themselves as to the working order and condition. If a property is unoccupied at any time there may be reconnection charges for any switched off/disconnected or drained services or appliances - All measurements are approximate.

THINKING OF SELLING? If you are thinking of selling your home or just curious to discover the value of your property, Hunters would be pleased to provide free, no obligation sales and marketing advice. Even if your home is outside the area covered by our local offices we can arrange a Market Appraisal through our national network of Hunters estate agents.