

# HUNTERS<sup>®</sup>

HERE TO GET *you* THERE



## Elam Close

London, SE5 9BW

£2,400 Per Month



Elam Close SE5

Three double bedroom apartment in the heart of Zone 2.

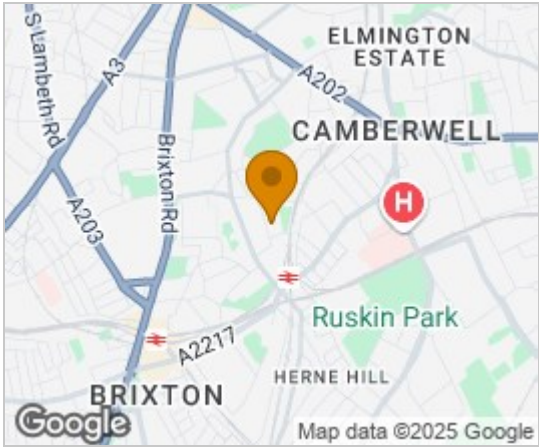
This purpose built three double bedroom split level apartment benefits from 3 good sized double bedrooms, spacious separate reception leading to a private terrace..

There is two modern fitted bathrooms one on each floor, with a spacious kitchen.

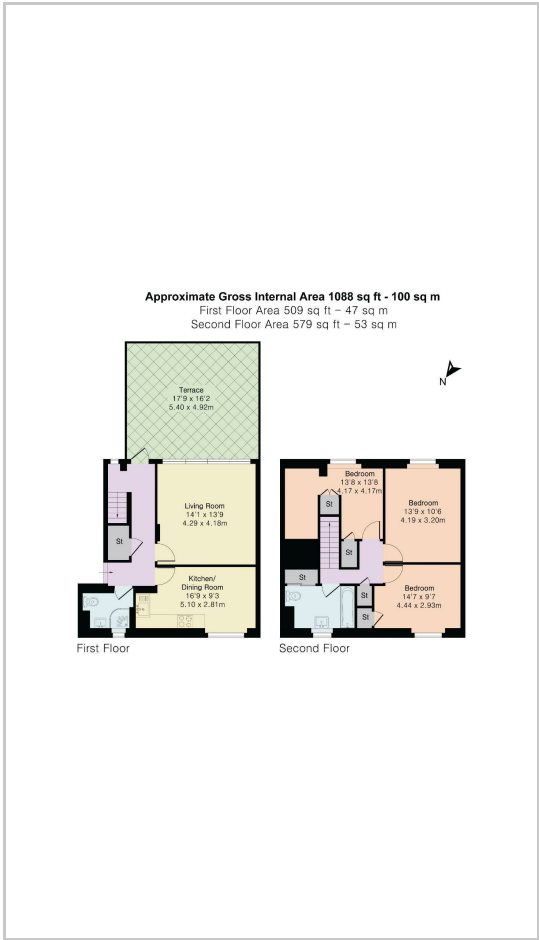
This property has plenty of built in storage.



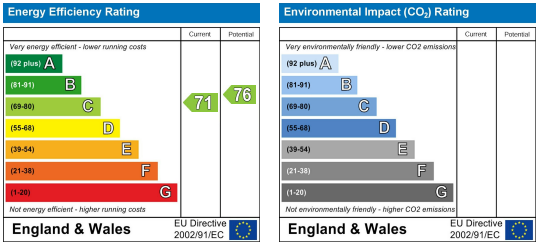
## Area Map



## Floor Plans



## Energy Efficiency Graph



These particulars are intended to give a fair and reliable description of the property but no responsibility for any inaccuracy or error can be accepted and do not constitute an offer or contract. We have not tested any services or appliances (including central heating if fitted) referred to in these particulars and the purchasers are advised to satisfy themselves as to the working order and condition. If a property is unoccupied at any time there may be reconnection charges for any switched off/disconnected or drained services or appliances - All measurements are approximate. **THINKING OF SELLING?** If you are thinking of selling your home or just curious to discover the value of your property, Hunters would be pleased to provide free, no obligation sales and marketing advice. Even if your home is outside the area covered by our local offices we can arrange a Market Appraisal through our national network of Hunters estate agents.