

HUNTERS[®]

HERE TO GET *you* THERE



Congreve Street

London, SE17 1TG

£2,750 Per Month



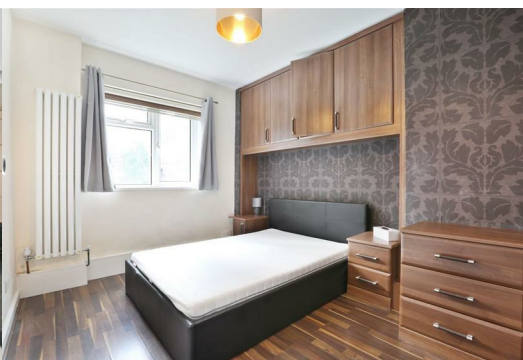
Congreve Street SE17

This Purpose built three double bedroom apartment with separate reception and kitchen

This well proportioned property has recently been refurbished to a high standard and benefits from three good sized double bedrooms, large separate reception and modern fitted kitchen and stylish bathroom and WC.

A short walk to Elephant & Castle tube station (Northern & Bakerloo lines) and overground with easy access to the West End & City. Minutes from a vast range of bars, restaurants and local amenities that this ever popular central London area has to offer.

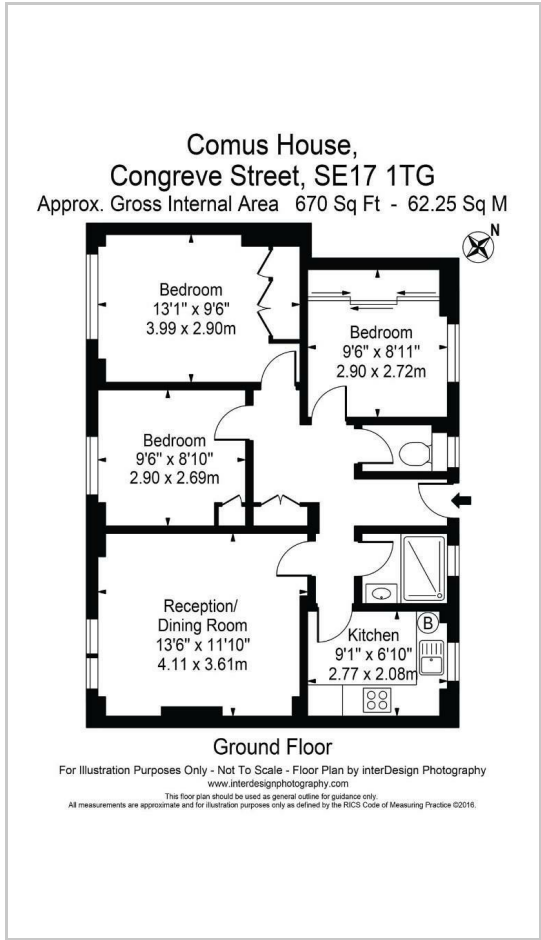
The property comes fully furnished and is available now.



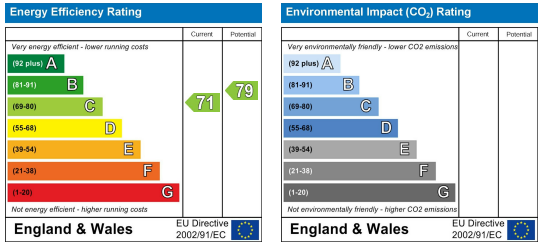
Area Map



Floor Plans



Energy Efficiency Graph



These particulars are intended to give a fair and reliable description of the property but no responsibility for any inaccuracy or error can be accepted and do not constitute an offer or contract. We have not tested any services or appliances (including central heating if fitted) referred to in these particulars and the purchasers are advised to satisfy themselves as to the working order and condition. If a property is unoccupied at any time there may be reconnection charges for any switched off/disconnected or drained services or appliances - All measurements are approximate. **THINKING OF SELLING?** If you are thinking of selling your home or just curious to discover the value of your property, Hunters would be pleased to provide free, no obligation sales and marketing advice. Even if your home is outside the area covered by our local offices we can arrange a Market Appraisal through our national network of Hunters estate agents.