



Paulet Road

SE5 9HP

£2,900 Per Calendar Month



Four double bedroom apartment with separate reception and communal gardens.

This well proportioned property has boasts four good sized double bedrooms, two modern fitted bathrooms - perfect for sharers, large kitchen diner and spacious separate reception.

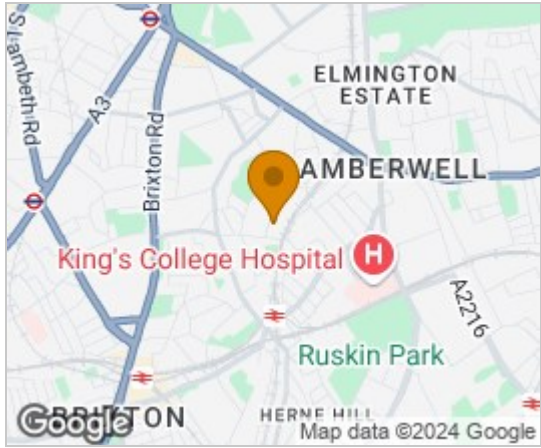
To the rear of the property is a well maintained communal garden. Myatts Field Victorian Park is a two minute walk away with its tennis courts, coffee shop and bandstand.

Situated in the heart of Zone 2 Central London, a short hop to Oval tube, with easy access into the West End & City. This popular area has a vast range of bars restaurants and local amenities nearby.

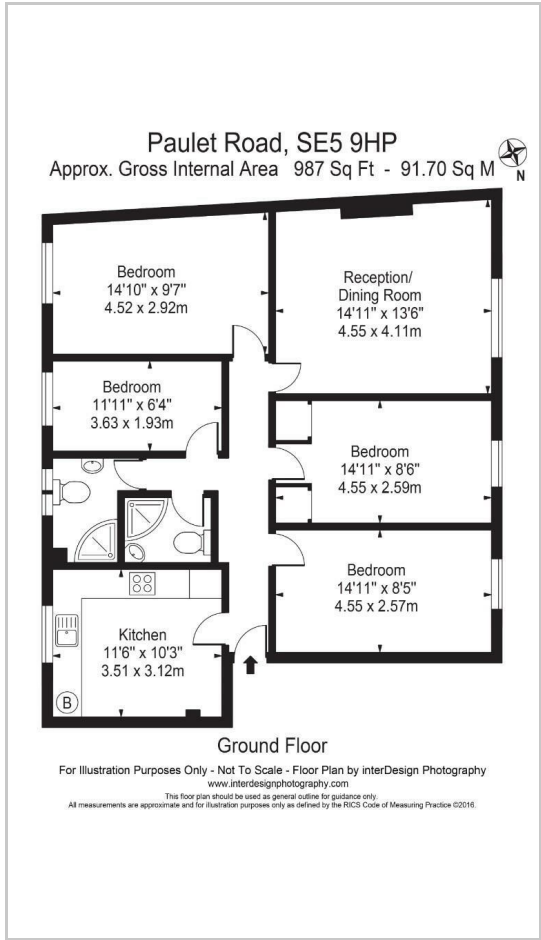
Comes part furnished and is available from November.



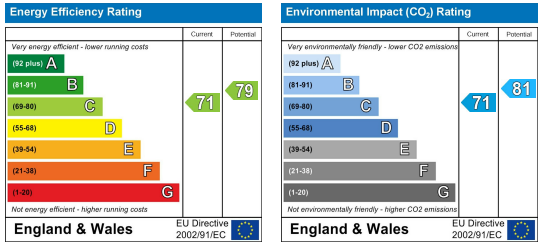
Area Map



Floor Plans



Energy Efficiency Graph



These particulars are intended to give a fair and reliable description of the property but no responsibility for any inaccuracy or error can be accepted and do not constitute an offer or contract. We have not tested any services or appliances (including central heating if fitted) referred to in these particulars and the purchasers are advised to satisfy themselves as to the working order and condition. If a property is unoccupied at any time there may be reconnection charges for any switched off/disconnected or drained services or appliances - All measurements are approximate. **THINKING OF SELLING?** If you are thinking of selling your home or just curious to discover the value of your property, Hunters would be pleased to provide free, no obligation sales and marketing advice. Even if your home is outside the area covered by our local offices we can arrange a Market Appraisal through our national network of Hunters estate agents.