

HUNTERS[®]

HERE TO GET *you* THERE



Addington Square

London, SE5 7LB

£1,600 Per Calendar Month

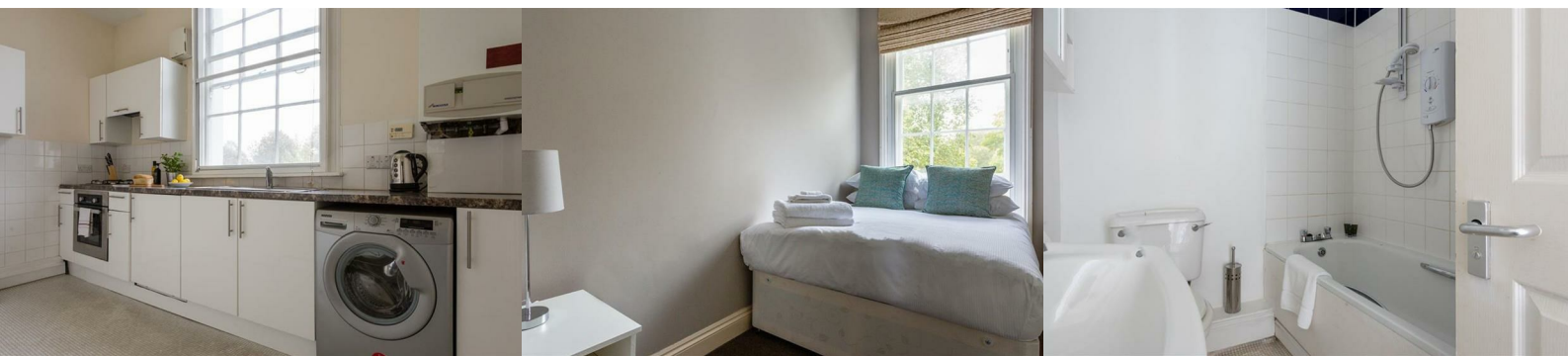


Beautiful one bed apartment with separate reception forming part of an imposing Georgian house situated on one of the nicest squares in the borough.

This well proportioned one bedder benefits from a modern fitted contemporary kitchen diner, spacious separate reception, good sized double bedroom and contemporary bathroom.

Adjacent to Burgess Park and its tennis courts, the property is a short hop to excellent transport links with easy access in to the West End & City and a vast range bars restaurants and local amenities including the famous East Street market.

Comes furnished and is available mid June.



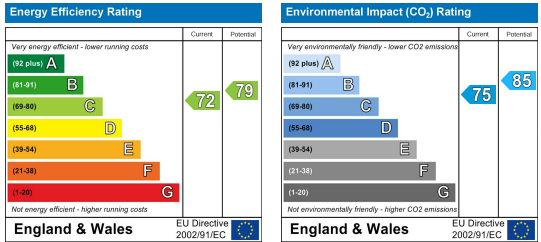
Area Map



Floor Plans



Energy Efficiency Graph



These particulars are intended to give a fair and reliable description of the property but no responsibility for any inaccuracy or error can be accepted and do not constitute an offer or contract. We have not tested any services or appliances (including central heating if fitted) referred to in these particulars and the purchasers are advised to satisfy themselves as to the working order and condition. If a property is unoccupied at any time there may be reconnection charges for any switched off/disconnected or drained services or appliances - All measurements are approximate. **THINKING OF SELLING?** If you are thinking of selling your home or just curious to discover the value of your property, Hunters would be pleased to provide free, no obligation sales and marketing advice. Even if your home is outside the area covered by our local offices we can arrange a Market Appraisal through our national network of Hunters estate agents.