



When Quality Matters

# Design: it's all in the detail

THE CAER AMON APARTMENTS BRIGHOUSE PARK CROSS CRAMOND

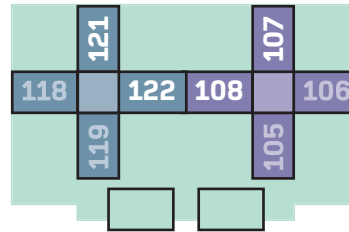
AMA homes have always offered more and at Caer Amon our commitment to exceptional quality is unparalleled. We are offering spacious apartments and duplexes featuring two and three bedroom homes. You can rest assured that every single aspect of planning and construction has been carefully considered and with generous dimensions and numerous additional features, these outstanding homes provide spacious and comfortable living.

**THE CAER AMON APARTMENTS** BRIGHOUSE PARK CROSS CRAMOND

## Your guide to the floorplans

### THIRD FLOOR

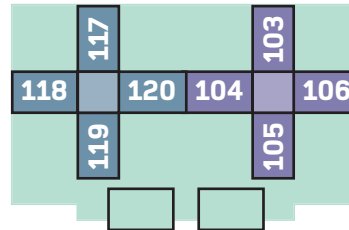
West Block	Page
Plot 121	32
Plot 122	33



East Block	Page
Plot 107	18
Plot 108	19

### SECOND FLOOR

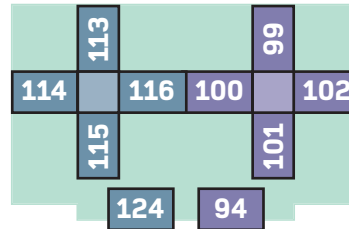
West Block	Page
Plot 117	24
Plot 118	28
Plot 119	30
Plot 120	27



East Block	Page
Plot 103	10
Plot 104	11
Plot 105	14
Plot 106	16

### FIRST FLOOR

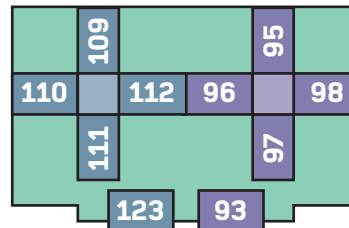
West Block	Page
Plot 113	24
Plot 114	25
Plot 115	26
Plot 116	27
Plot 124	35



East Block	Page
Plot 94	5
Plot 99	10
Plot 100	11
Plot 101	12
Plot 102	13

### GROUND FLOOR

West Block	Page
Plot 109	20
Plot 110	21
Plot 111	22
Plot 112	23
Plot 123	34



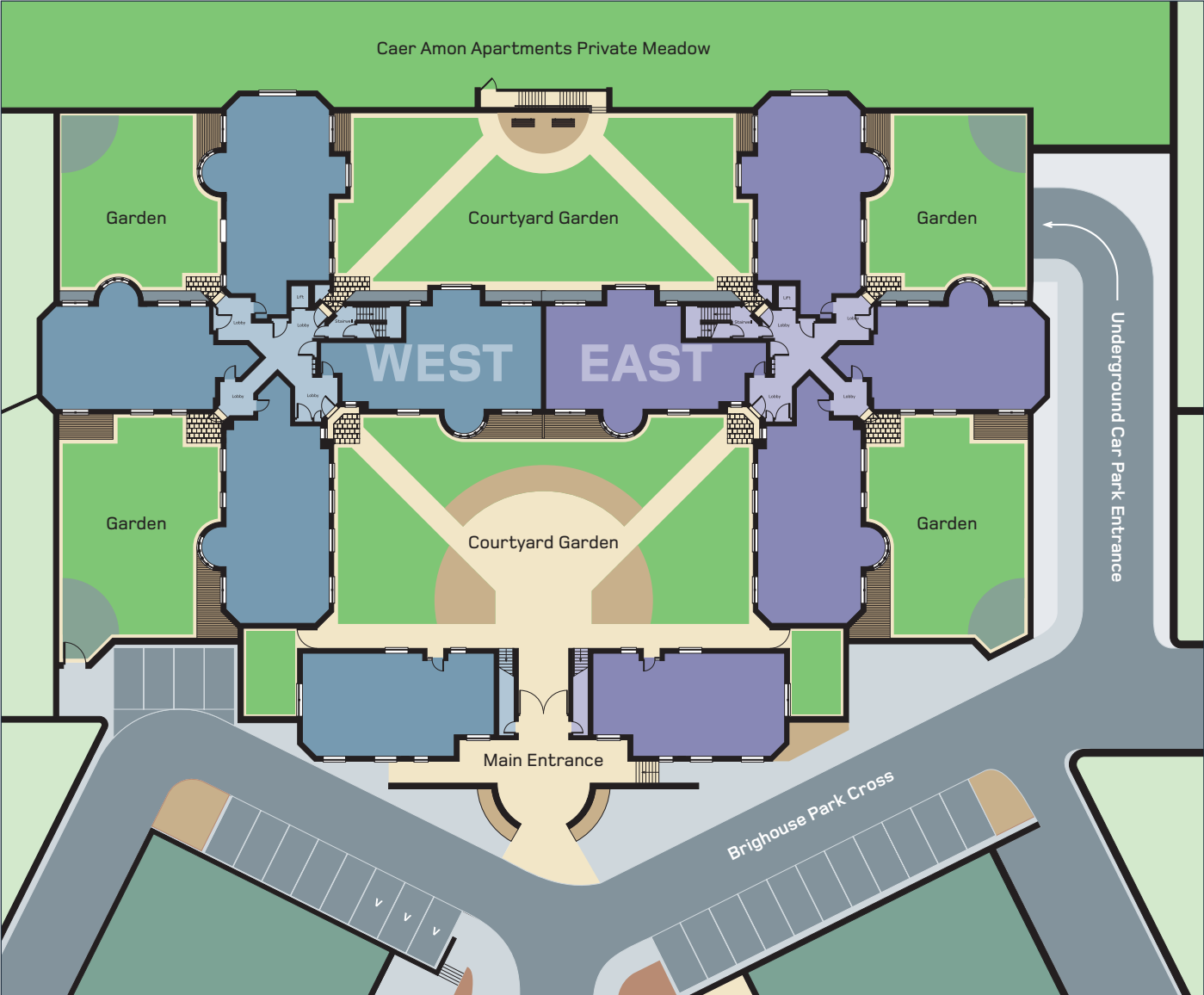
East Block	Page
Plot 93	4
Plot 95	6
Plot 96	7
Plot 97	8
Plot 98	9



At Caer Amon quality and care begin before you even enter the building. The walled courtyards and gardens provide beautifully landscaped grounds in which to relax, whilst the private meadow garden offers access to pathways down to Cramond harbour and waterfront. The secure, private underground car park has an automatic door operated from your key fob and your own personal parking space. Once inside the car park you'll find lift access to all floors, allowing you to be transported straight to your front door in warmth and comfort.



# Designed for your comfort





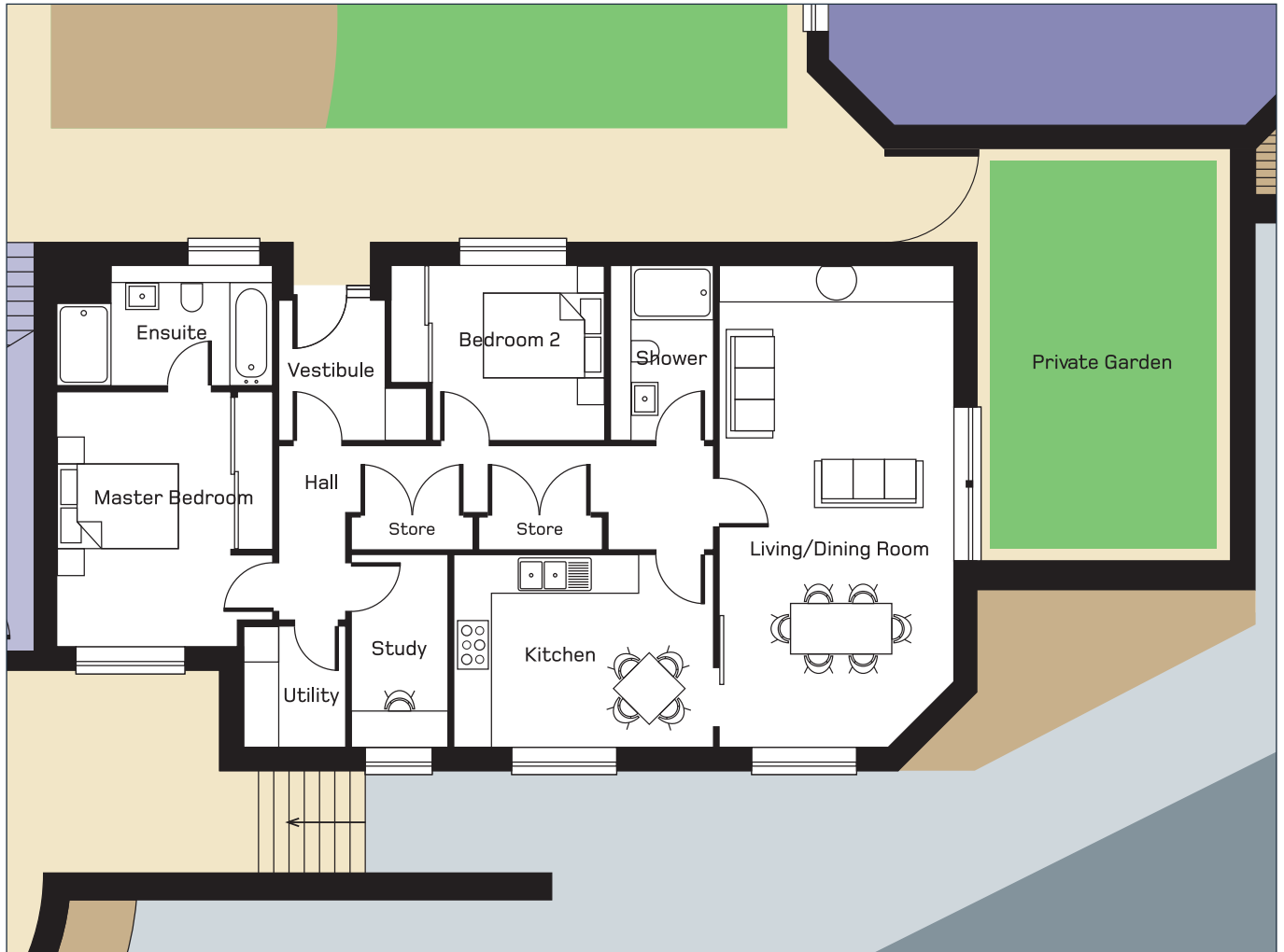
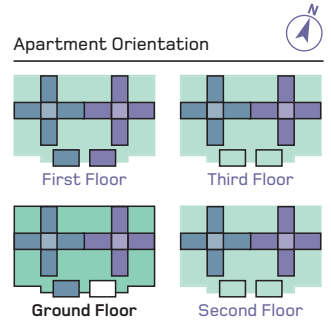
### Plot 93

#### EAST LODGE

A two bedroom apartment with its own private garden on the ground floor of the East Lodge.

All dimensions are to the widest points.

Metric	metres	Imperial	feet
Living/Dining Room	8.00 x 3.90	Living/Dining Room	12'1 x 26'3
Kitchen	3.20 x 4.30	Kitchen	10'6 x 14'1
Master Bedroom	3.60 x 4.24	Master Bedroom	11'1 x 13'11
En suite	3.59 x 2.00	En suite	6'7 x 11'9
Bedroom 2	2.85 x 2.88	Bedroom 2	9'4 x 9'5
Shower Room	1.70 x 2.91	Shower Room	5'7 x 9'7
Study	3.20 x 1.60	Study	10'6 x 5'3
Utility Room	2.01 x 1.70	Utility Room	6'7 x 5'7

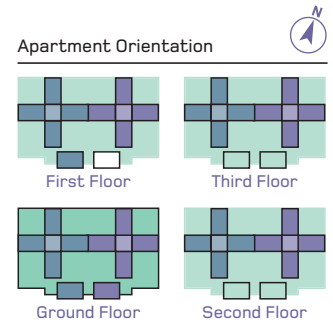


**Plot 94****EAST LODGE**

A two bedroom apartment on the first floor of the East Lodge.

All dimensions are to the widest points.

Metric	metres	Imperial	feet
Living Room	4.70 x 3.82	Living Room	12'6 x 15'5
Kitchen	3.20 x 5.20	Kitchen	17'1 x 10'6
Master Bedroom	3.50 x 3.50	Master Bedroom	11'6 x 11'6
En suite	2.00 x 3.50	En suite	6'7 x 11'6
Bedroom 2	3.50 x 3.38	Bedroom 2	11'1 x 11'6
Shower Room	2.91 x 1.79	Shower Room	5'11 x 9'7
Utility Room	2.50 x 1.81	Utility Room	8'2 x 5'11



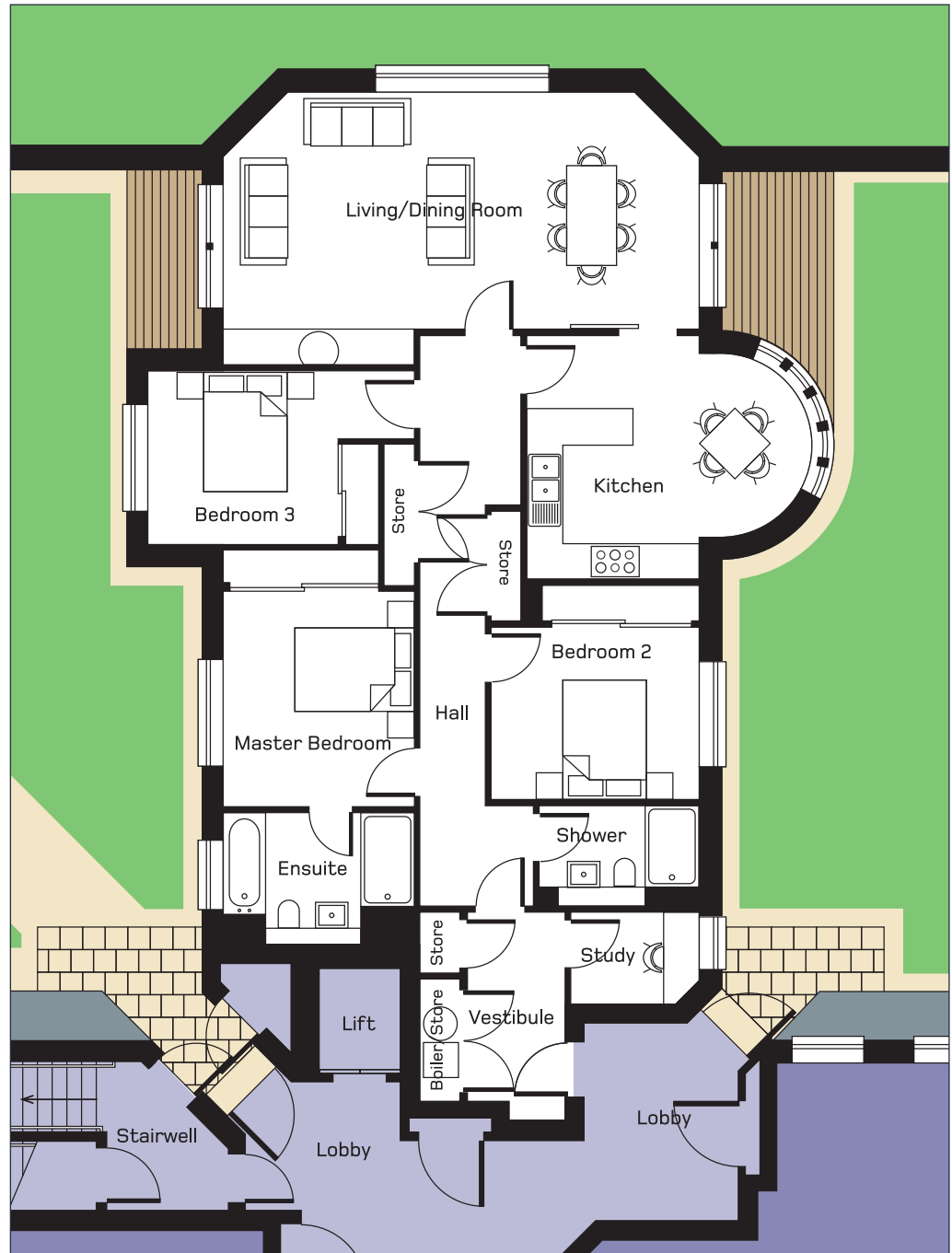
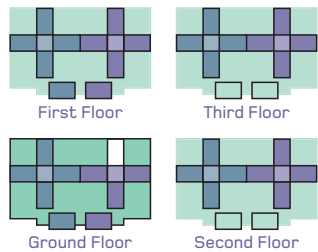
**Plot 95****EAST BLOCK**

A three bedroom apartment with decked areas on the ground floor.

All dimensions are to the widest points.

Metric	metres
Living/Dining Room	8.00 x 4.60
Kitchen	4.09 x 4.80
Master Bedroom	3.20 x 3.68
En suite	3.20 x 22.0
Bedroom 2	3.50 x 2.96
Bedroom 3	2.90 x 4.46
Shower Room	2.71 x 1.69
Study	2.15 x 1.54

Imperial	feet
Living/Dining Room	26'3 x 15'1
Kitchen	15'9 x 13'5
Master Bedroom	10'6 x 12'1
En suite	10'6 x 7'3
Bedroom 2	11'6 x 9'9
Bedroom 3	9'6 x 14'8
Shower Room	8'11 x 5'7
Study	7'1 x 5'0

**Apartment Orientation**

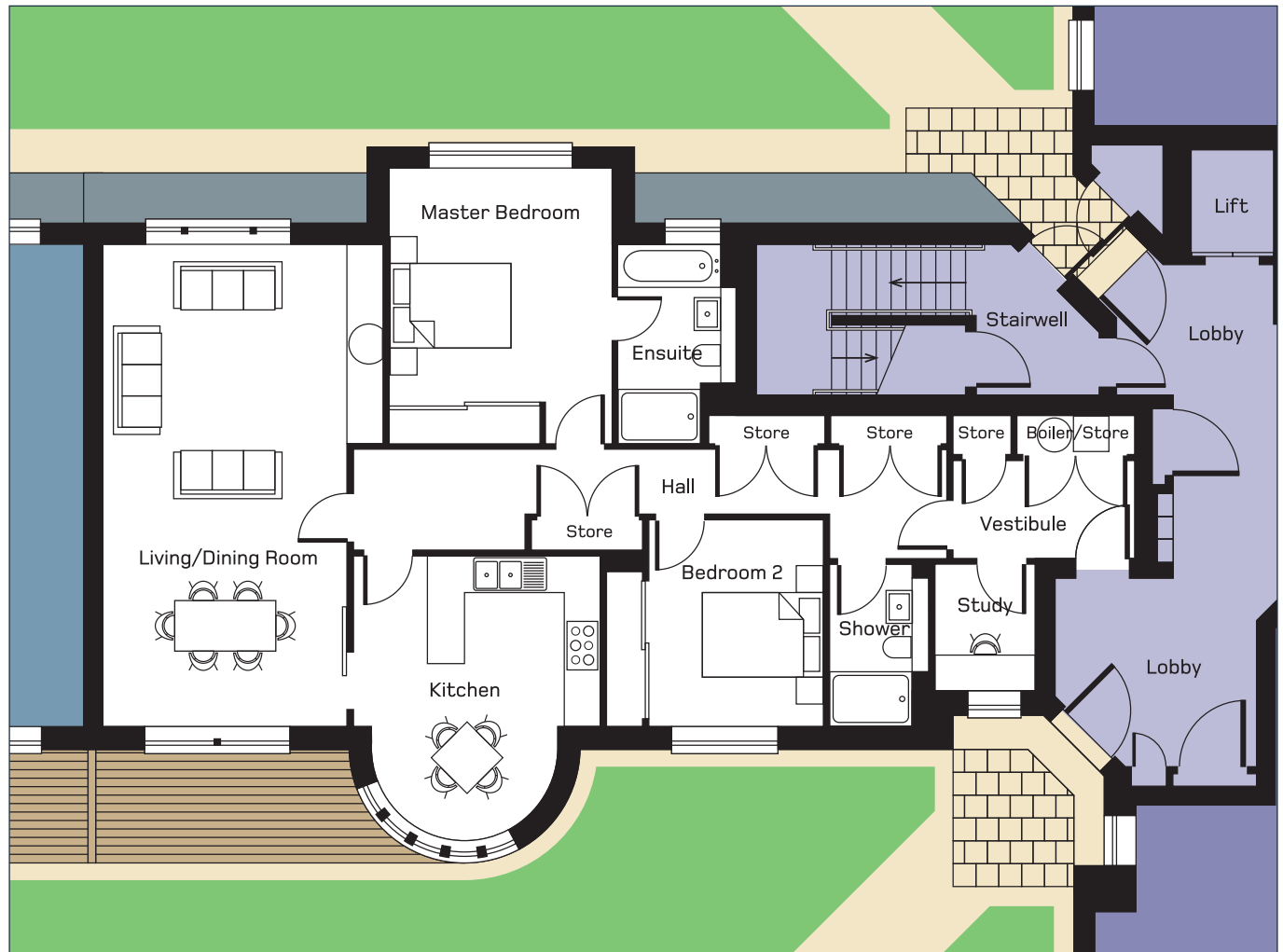
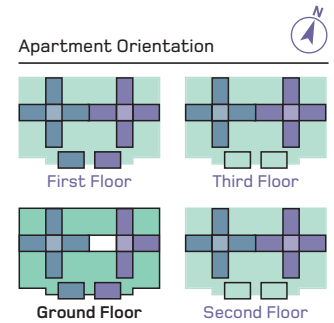


**Plot 96****EAST BLOCK**

A two bedroom apartment with decked area on the ground floor.

All dimensions are to the widest points.

Metric	metres	Imperial	feet
Living/Dining Room	8.00 x 4.66	Living/Dining Room	15'4" x 26'3"
Kitchen	4.10 x 4.70	Kitchen	13'6" x 15'5"
Master Bedroom	4.56 x 3.71	Master Bedroom	12'2" x 15'0"
En suite	3.30 x 1.95	En suite	6'5" x 10'10"
Bedroom 2	3.40 x 2.89	Bedroom 2	9'6" x 11'2"
Shower Room	2.70 x 1.70	Shower Room	5'7" x 8'1"
Study	2.90 x 1.65	Study	5'5" x 6'1"



### Plot 97

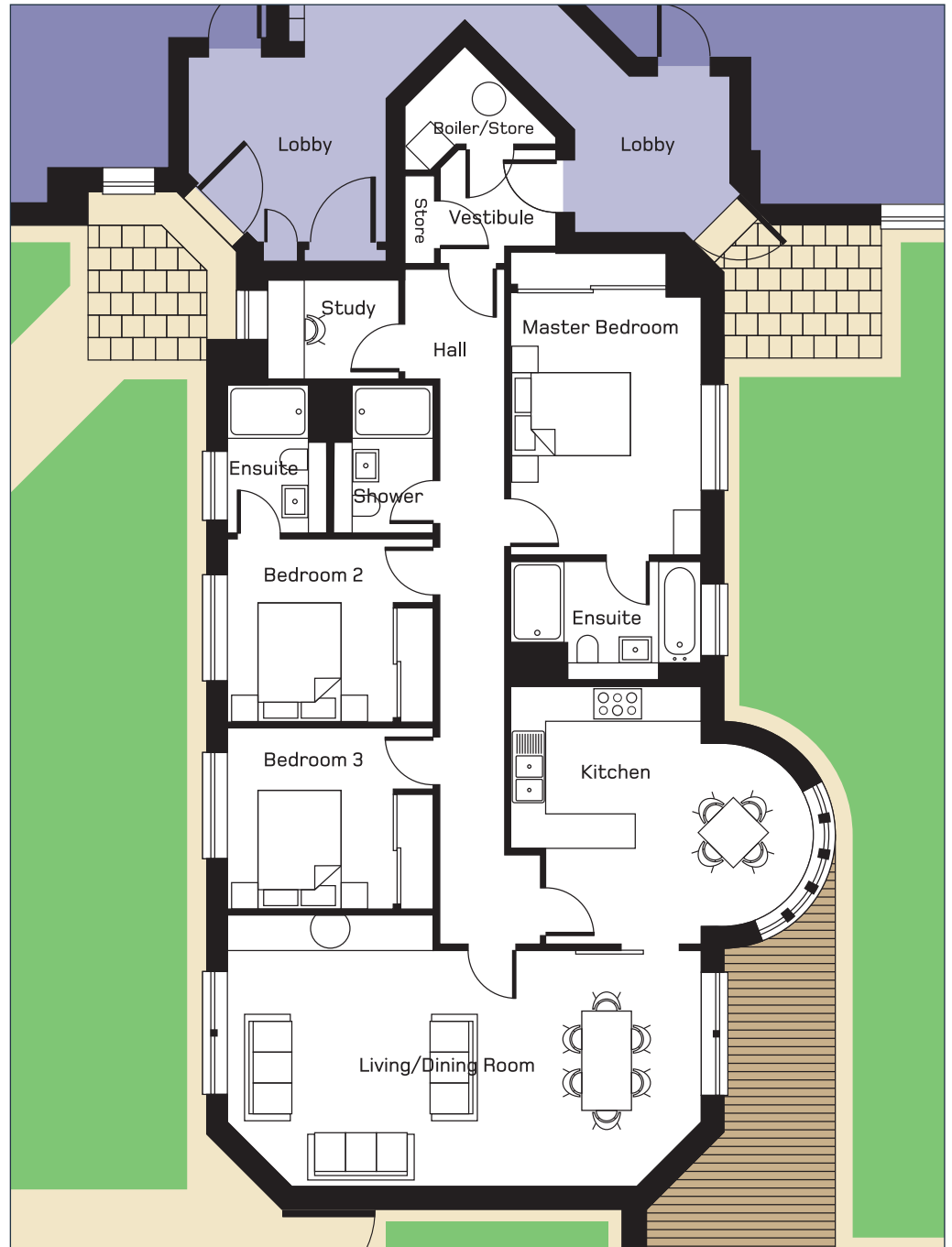
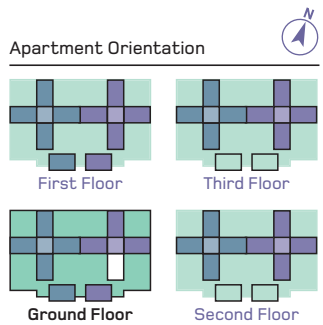
#### EAST BLOCK

A three bedroom apartment with decked area on the ground floor.

All dimensions are to the widest points.

Metric	metres
Living/Dining Room	8.00 x 4.60
Kitchen	5.10 x 4.37
Master Bedroom	3.20 x 4.39
En suite	3.20 x 2.00
Bedroom 2	3.50 x 3.06
En suite	2.50 x 1.70
Bedroom 3	3.60 x 3.10
Shower Room	2.50 x 1.70
Study	2.21 x 1.66

Imperial	feet
Living/Dining Room	26'3" x 15'1"
Kitchen	16'9" x 14'4"
Master Bedroom	14'5" x 10'6"
En suite	10'6" x 6'7"
Bedroom 2	11'6" x 10'0"
En suite	8'2" x 5'7"
Bedroom 3	11'9" x 10'2"
Shower Room	8'2" x 5'7"
Study	7'3" x 5'6"



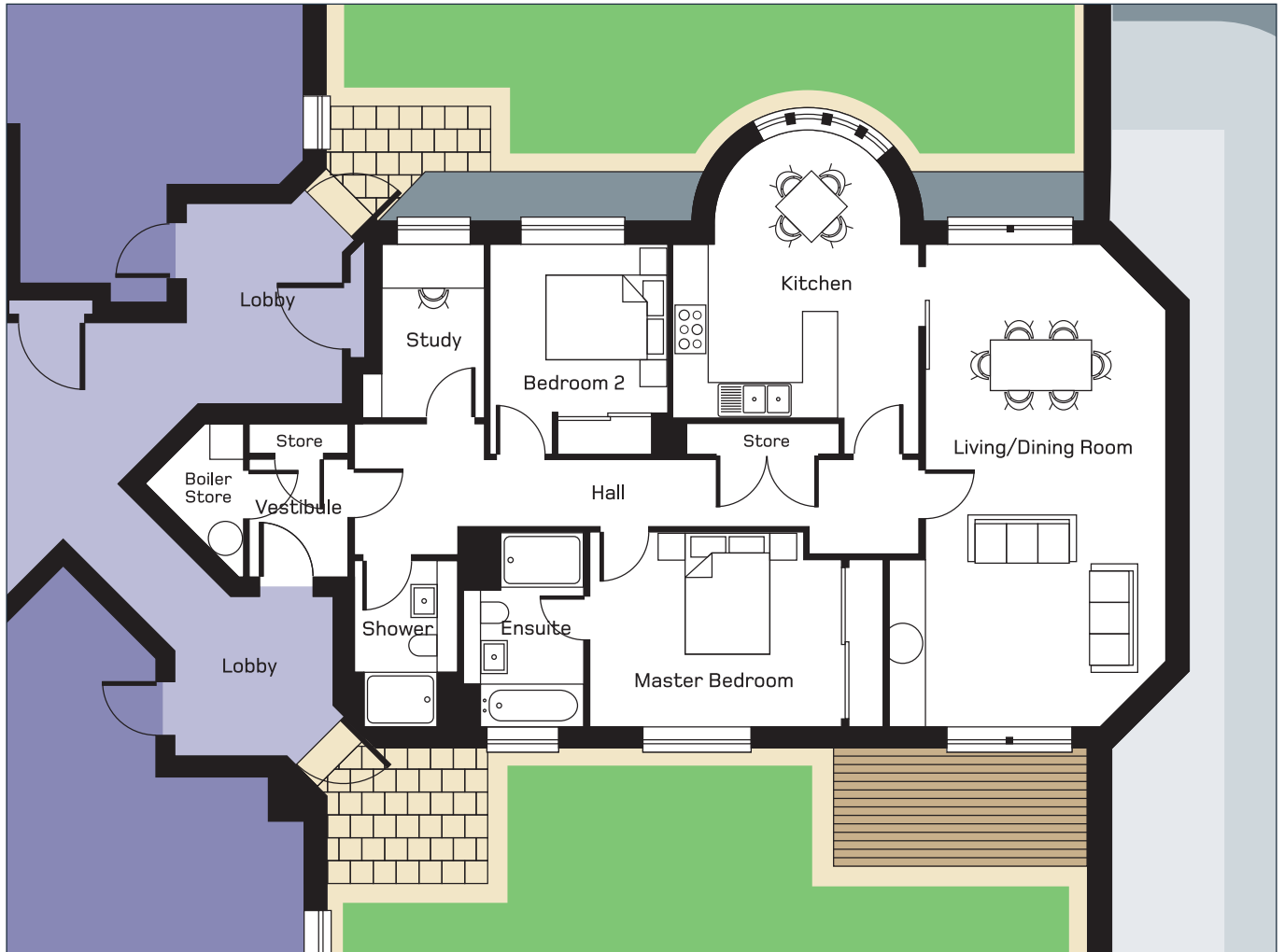
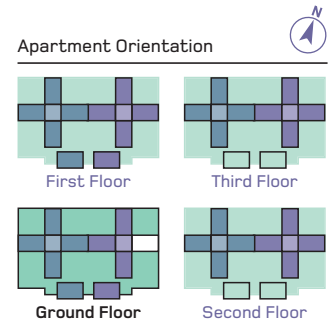
### Plot 98

#### EAST BLOCK

A two bedroom apartment with decked area on the ground floor.

All dimensions are to the widest points.

Metric	metres	Imperial	feet
Living/Dining Room	8.00 x 4.60	Living/Dining Room	15'1 x 26'3
Kitchen	5.42 x 4.09	Kitchen	13'5 x 17'9
Master Bedroom	4.25 x 3.21	Master Bedroom	10'7 x 13'11
En suite	3.19 x 2.00	En suite	10'6 x 6'7
Bedroom 2	2.92 x 3.50	Bedroom 2	9'7 x 11'5
Shower Room	2.40 x 1.70	Shower Room	5'7 x 7'10
Study	2.91 x 1.69	Study	9'7 x 5'7



## Plots 99 & 103

### EAST BLOCK

Two identical three bedroom apartments, one on the first floor and the other on the second floor.

All dimensions are to the widest points.

Metric	metres
Living/Dining Room	8.00 x 4.61
Kitchen	4.80 x 4.09
Master Bedroom	3.20 x 3.68
En suite	3.20 x 2.20
Bedroom 2	2.90 x 4.46
Bedroom 3	3.50 x 2.96
Shower Room	2.70 x 1.69
Study	2.15 x 1.52

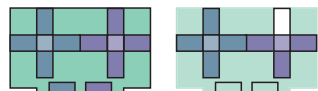
Imperial	feet
Living/Dining Room	15'1" x 26'3"
Kitchen	15'9" x 13'5"
Master Bedroom	12'1" x 10'6"
En suite	10'6" x 7'3"
Bedroom 2	14'8" x 9'6"
Bedroom 3	11'6" x 9'9"
Shower Room	8'1" x 5'7"
Study	7'1" x 5'0"

#### Apartment Orientation



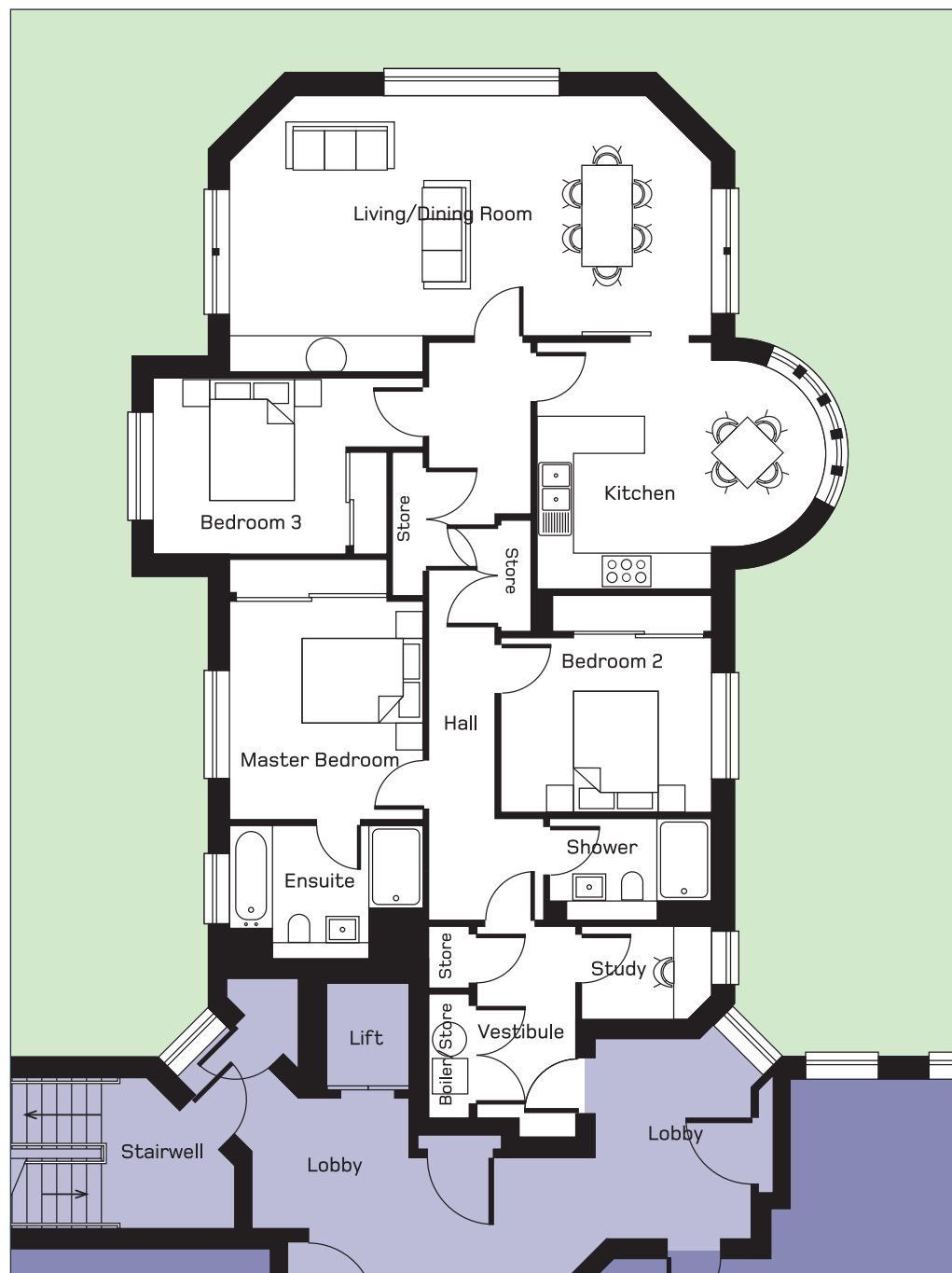
First Floor

Third Floor



Ground Floor

Second Floor



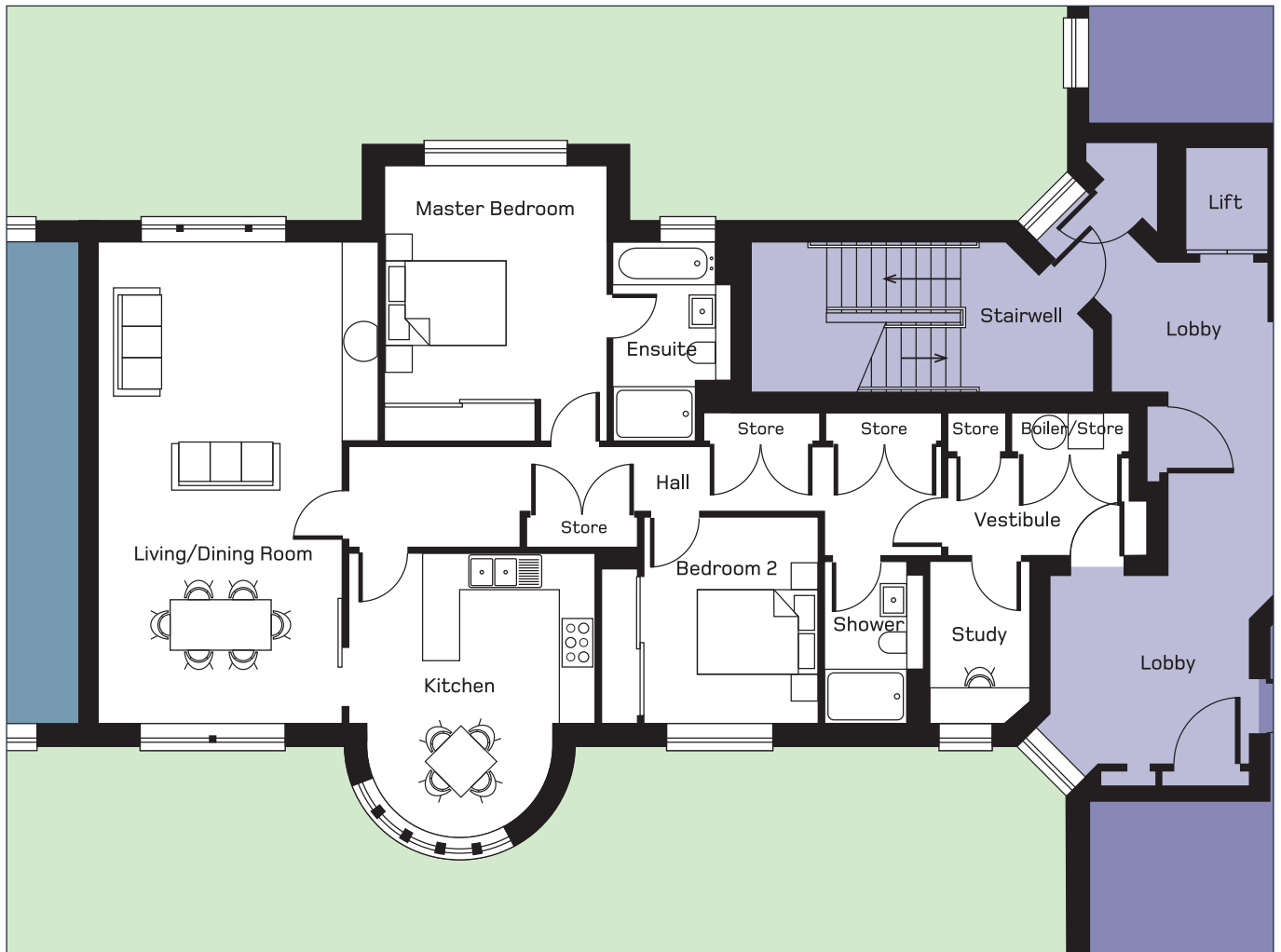
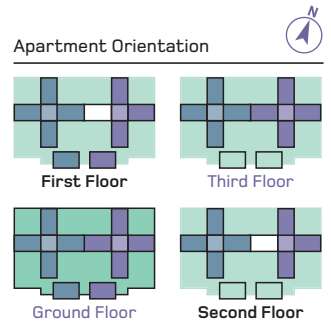
### Plot 100 & 104

#### EAST BLOCK

Two identical two bedroom apartments, one on the first floor and the other on the second floor.

All dimensions are to the widest points.

Metric	metres	Imperial	feet
Living/Dining Room	8.00 x 4.66	Living/Dining Room	15'4" x 26'3"
Kitchen	4.70 x 4.09	Kitchen	13'5" x 15'5"
Master Bedroom	4.56 x 3.71	Master Bedroom	15'0" x 12'2"
En suite	3.30 x 1.95	En suite	6'5" x 10'10"
Bedroom 2	2.83 x 3.40	Bedroom 2	11'2" x 9'3"
Shower Room	1.70 x 2.70	Shower Room	5'7" x 8'1"
Study	1.65 x 2.69	Study	5'5" x 8'1"



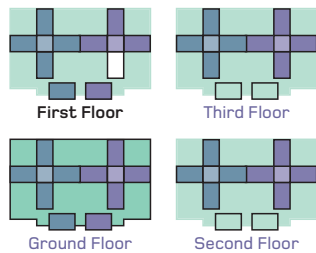
**Plot 101****EAST BLOCK**

A three bedroom apartment with decked balcony on the first floor.

All dimensions are to the widest points.

Metric	metres
Living/Dining Room	8.00 x 4.60
Kitchen	3.20 x 4.37
Master Bedroom	4.06 x 3.20
En suite	3.20 x 2.00
Bedroom 2	3.50 x 3.10
En suite	1.70 x 2.49
Bedroom 3	3.50 x 3.10
Shower Room	1.70 x 2.50
Study	3.30 x 2.52

Imperial	feet
Living/Dining Room	26'3" x 15'1"
Kitchen	10'6" x 14'4"
Master Bedroom	10'6" x 13'4"
En suite	10'6" x 6'7"
Bedroom 2	11'6" x 10'2"
En suite	5'7" x 8'2"
Bedroom 3	11'6" x 10'2"
Shower Room	5'7" x 8'2"
Study	8'3" x 10'10"

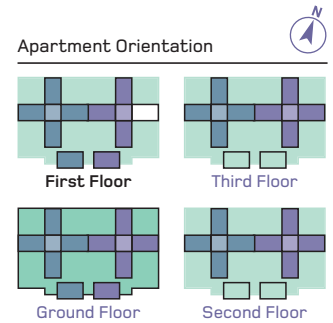
**Apartment Orientation**

**Plot 102****EAST BLOCK**

A two bedroom apartment with decked balcony on the first floor.

All dimensions are to the widest points.

Metric	metres	Imperial	feet
Living/Dining Room	8.00 x 4.00	Living/Dining Room	13'1 x 26'3
Kitchen	3.50 x 4.09	Kitchen	11'6 x 13'5
Master Bedroom	3.20 x 4.24	Master Bedroom	10'6 x 13'11
En suite	2.00 x 3.21	En suite	6'7 x 10'7
Bedroom 2	2.92 x 3.50	Bedroom 2	9'7 x 11'6
Shower Room	2.40 x 1.74	Shower Room	5'9 x 7'10
Study	1.69 x 2.91	Study	5'7 x 9'7
Utility Room	3.33 x 2.30	Utility Room	10'11 x 7'6





**Plot 105****EAST BLOCK**

A three/four bedroom duplex with large decked balcony on the second and third floor.

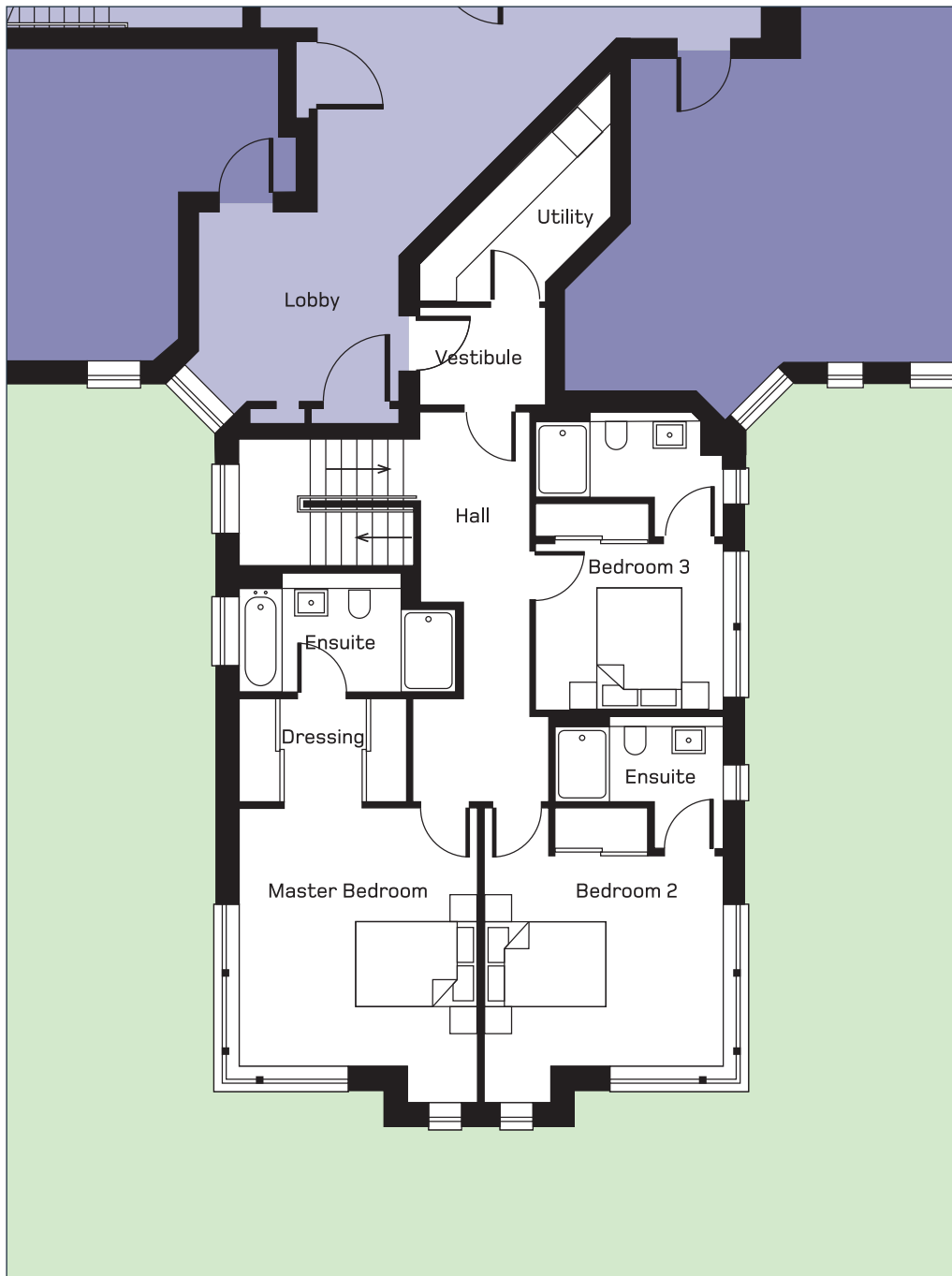
All dimensions are to the widest points.

**Lower Level****SECOND FLOOR**

Metric	metres
Living	8.00 x 4.23
Dining Room	3.37 x 3.29
Kitchen	3.23 x 4.74
Shower Room	2.67 x 1.64
Study/Bedroom 4	2.54 x 3.76

Imperial	feet
Living	26'3 x 13'11
Dining Room	11'1 x 10'10
Kitchen	10'7 x 15'7
Shower Room	8'9 x 5'5
Study/Bedroom 4	12'4 x 8'4





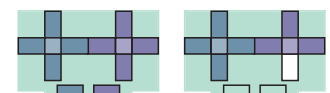
## Upper Level

### THIRD FLOOR

Metric	metres
Master Bedroom	6.00 x 3.95
En suite	1.97 x 3.57
Bedroom 2	4.88 x 3.95
En suite	2.13 x 2.76
Bedroom 3	3.08 x 2.70
En suite	2.04 x 2.76

Imperial	feet
Master Bedroom	19'8 x 13'0
En suite	11'9 x 6'6
Bedroom 2	16'0 x 13'0
En suite	7'0 x 9'1
Bedroom 3	10'1 x 8'10
En suite	9'1 x 6'8

### Apartment Orientation



First Floor

Third Floor



Ground Floor

Second Floor

**Plot 106****EAST BLOCK**

A three/four bedroom duplex with decked balcony on the second and third floor.

All dimensions are to the widest points.

**Lower Level****SECOND FLOOR**

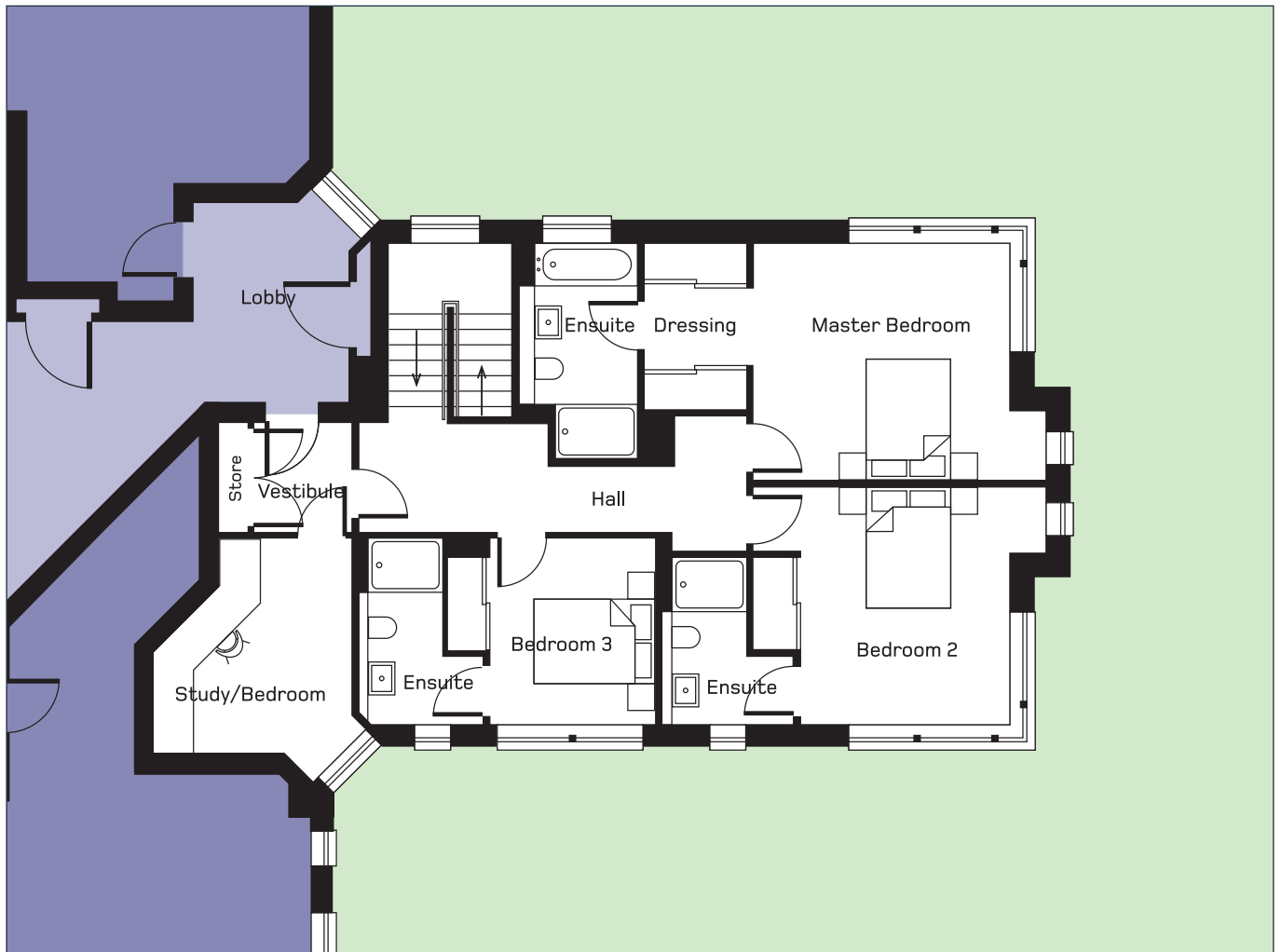
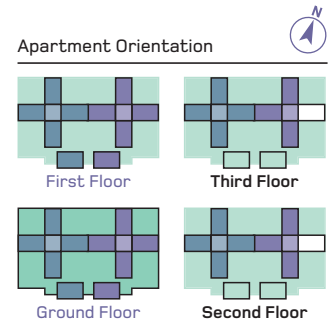
Metric	metres	Imperial	feet
Living	8.00 x 4.25	Living	26'3 x 13'11
Dining Room	3.81 x 3.19	Dining Room	12'6 x 10'5
Kitchen	3.27 x 4.66	Kitchen	15'4 x 10'9
WC	1.62 x 2.67	WC	8'9 x 5'4
Utility Room	3.33 x 2.28	Utility Room	10'11 x 7'6



**Upper Level**

**THIRD FLOOR**

Metric	metres	Imperial	feet
Master Bedroom	6.10 x 3.95	Master Bedroom	20'0 x 12'11
En suite	1.96 x 3.61	En suite	6'5 x 11'10
Bedroom 2	4.88 x 3.95	Bedroom 2	16'0 x 13'0
En suite	2.09 x 2.76	En suite	9'1 x 6'1
Bedroom 3	2.74 x 3.08	Bedroom 3	10'1 x 9'0
En suite	3.08 x 2.11	En suite	10'1 x 6'11
Study/Bedroom 4	3.59 x 3.23	Study/Bedroom 4	11'9 x 10'7



## Plot 107

### EAST BLOCK

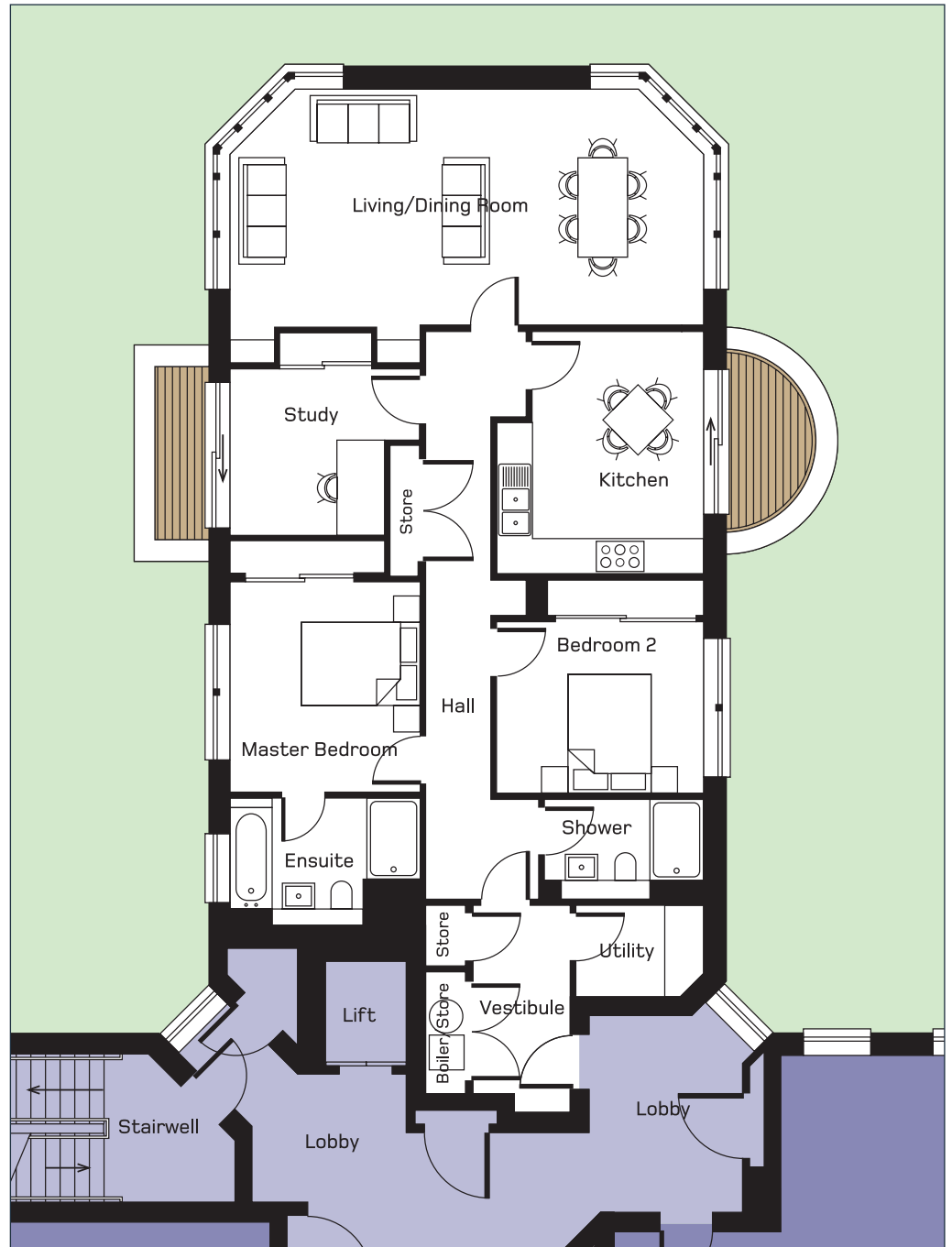
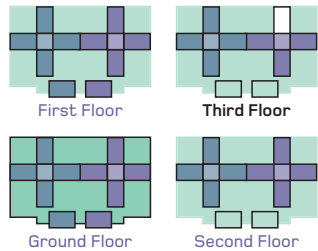
A three bedroom apartment with decked balconies on the third floor.

All dimensions are to the widest points.

Metric	metres
Living/Dining Room	8.00 x 3.98
Kitchen	4.07 x 3.50
Master Bedroom	3.20 x 3.57
En suite	3.20 x 2.33
Bedroom 2	3.50 x 2.82
Shower Room	2.71 x 1.69
Utility Room	2.15 x 1.53

Imperial	feet
Living/Dining Room	13'1" x 26'3"
Kitchen	11'6" x 13'4"
Master Bedroom	10'6" x 11'9"
En suite	10'6" x 7'8"
Bedroom 2	11'6" x 9'3"
Shower Room	5'7" x 8'11"
Utility Room	7'1" x 5'0"

#### Apartment Orientation



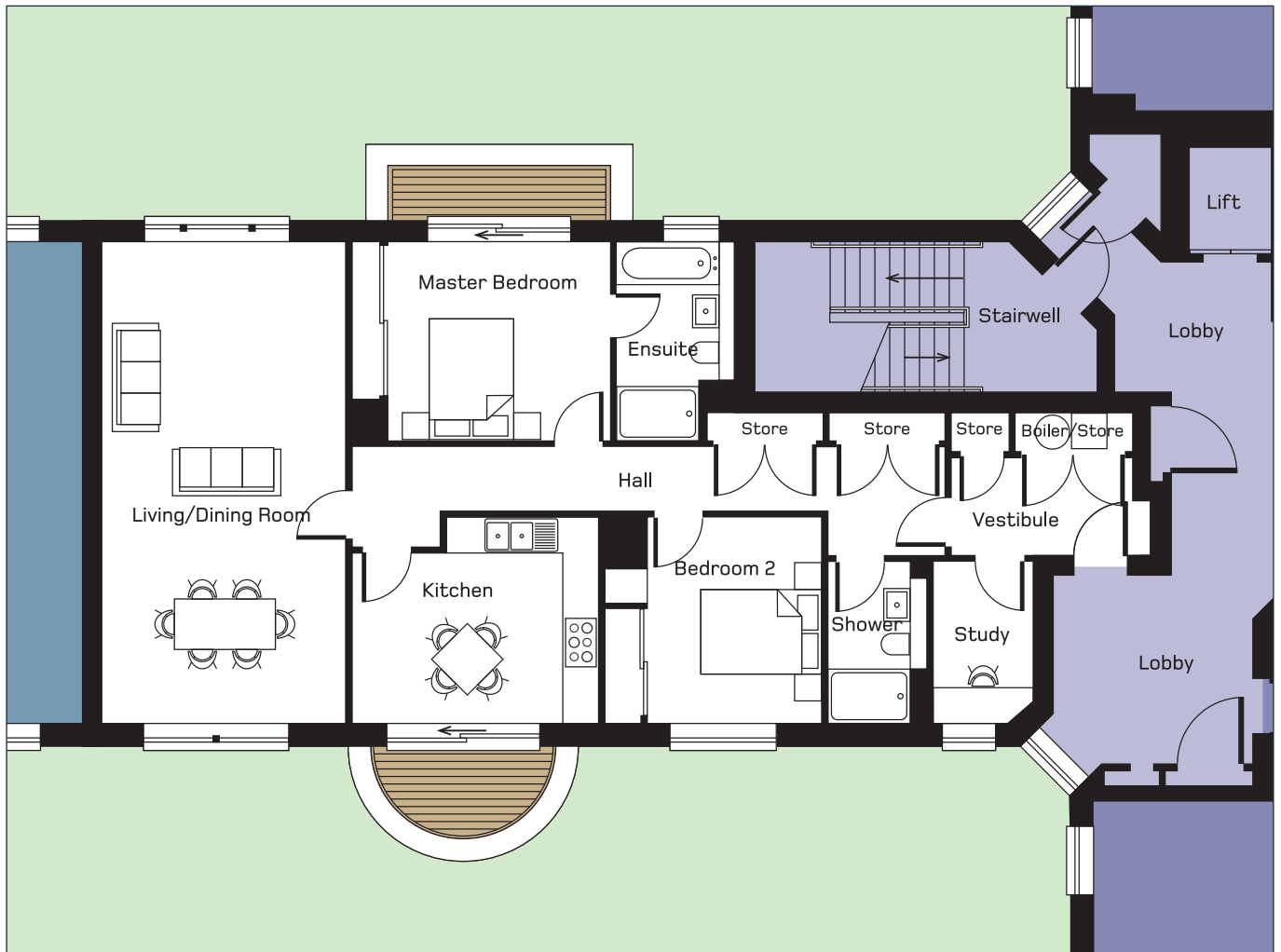
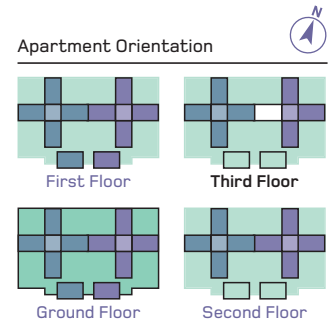
### Plot 108

#### EAST BLOCK

A two bedroom apartment with decked balconies on the third floor.

All dimensions are to the widest points.

Metric	metres	Imperial	feet
Living/Dining Room	8.00 x 4.05	Living/Dining Room	13'4" x 26'3"
Kitchen	4.15 x 3.40	Kitchen	11'2" x 13'7"
Master Bedroom	3.33 x 3.62	Master Bedroom	11'11" x 10'10"
En suite	1.99 x 3.31	En suite	6'6" x 10'11"
Bedroom 2	2.73 x 3.40	Bedroom 2	9'0" x 11'2"
Shower Room	1.70 x 2.70	Shower Room	8'1" x 5'7"
Study	1.67 x 2.69	Study	8'1" x 5'6"



## Apartment 109

### WEST BLOCK

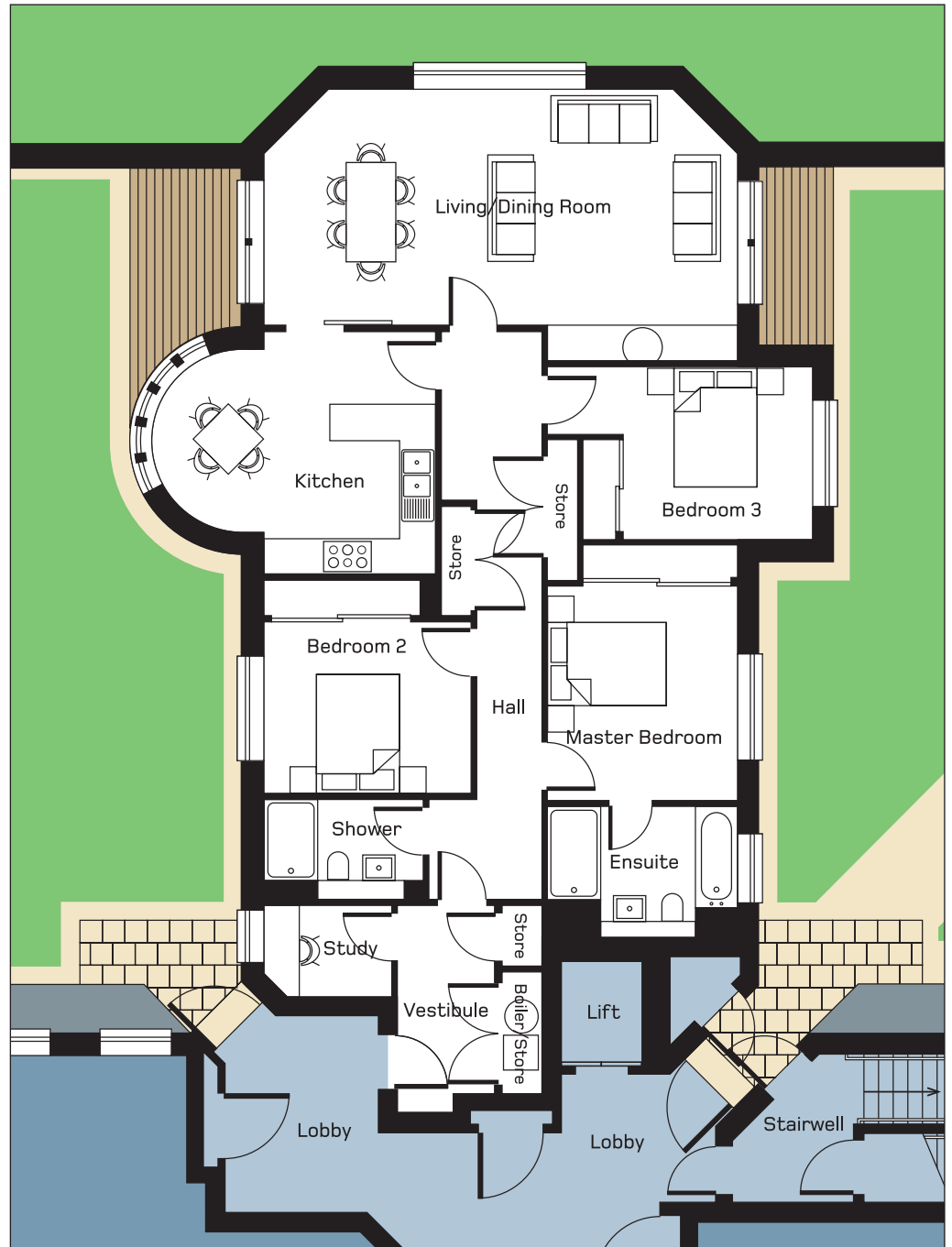
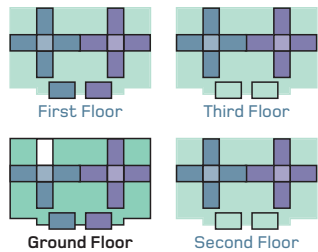
A three bedroom apartment with decked areas on the ground floor.

All dimensions are to the widest points.

Metric	metres
Living/Dining Room	8.00 x 4.60
Kitchen	4.09 x 4.80
Master Bedroom	3.20 x 3.68
En suite	3.20 x 22.0
Bedroom 2	3.50 x 2.96
Bedroom 3	2.90 x 4.46
Shower Room	2.71 x 1.69
Study	2.15 x 1.54

Imperial	feet
Living/Dining Room	26'3 x 15'1
Kitchen	15'9 x 13'5
Master Bedroom	10'6 x 12'1
En suite	10'6 x 7'3
Bedroom 2	11'6 x 9'9
Bedroom 3	9'6 x 14'8
Shower Room	8'11 x 5'7
Study	7'1 x 5'0

### Apartment Orientation



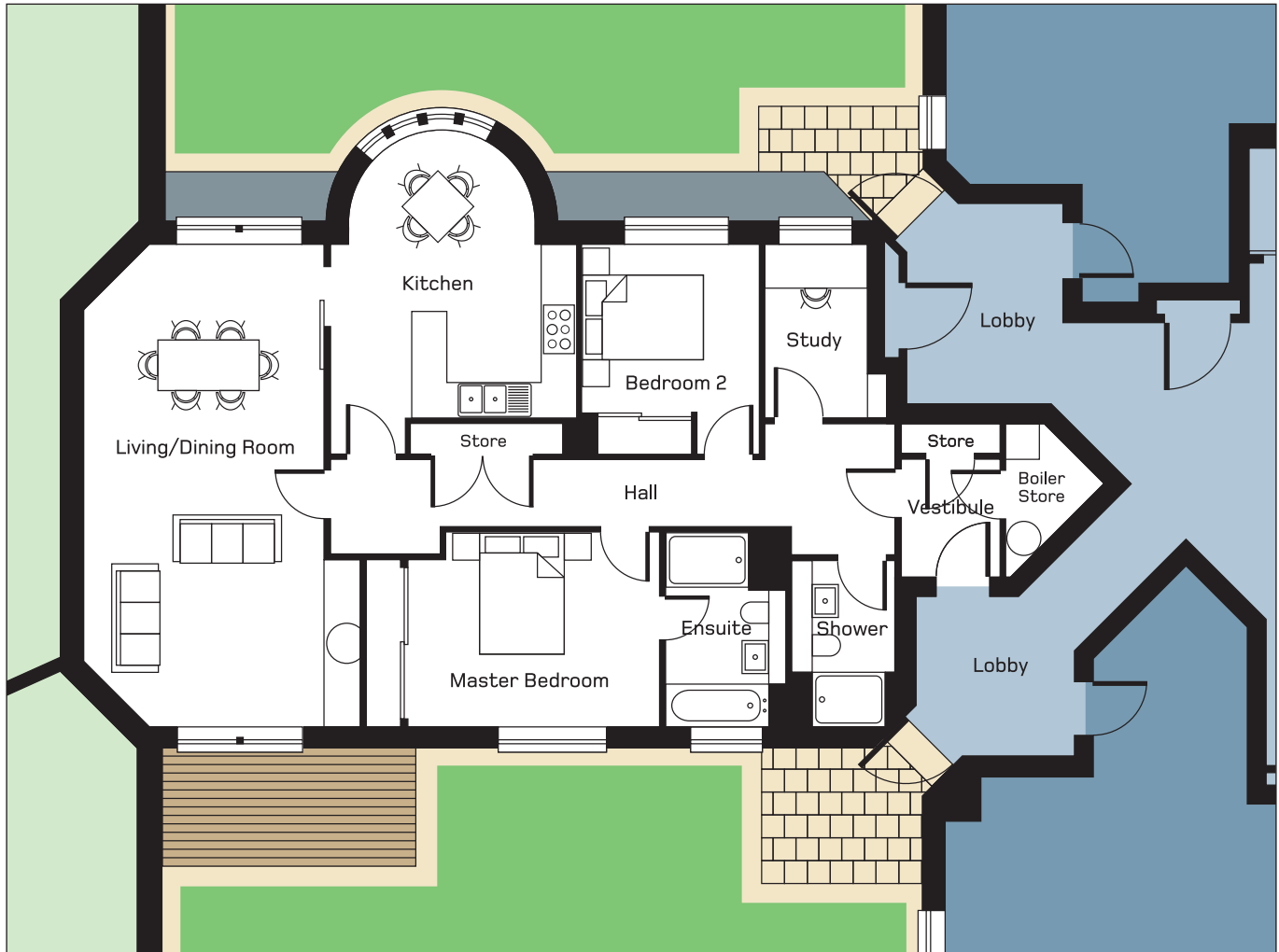
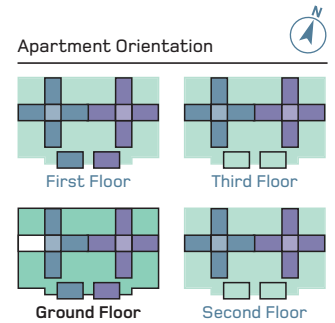


**Plot 110****WEST BLOCK**

A two bedroom apartment with decked area on the ground floor.

All dimensions are to the widest points.

Metric	metres	Imperial	feet
Living/Dining Room	8.00 x 4.60	Living/Dining Room	15'1 x 26'3
Kitchen	5.42 x 4.09	Kitchen	13'5 x 17'9
Master Bedroom	4.25 x 3.21	Master Bedroom	10'7 x 13'11
En suite	3.19 x 2.00	En suite	10'6 x 6'7
Bedroom 2	2.92 x 3.50	Bedroom 2	9'7 x 11'5
Shower Room	2.40 x 1.70	Shower Room	5'7 x 7'10
Study	2.91 x 1.69	Study	9'7 x 5'7



## Apartment 111

### WEST BLOCK

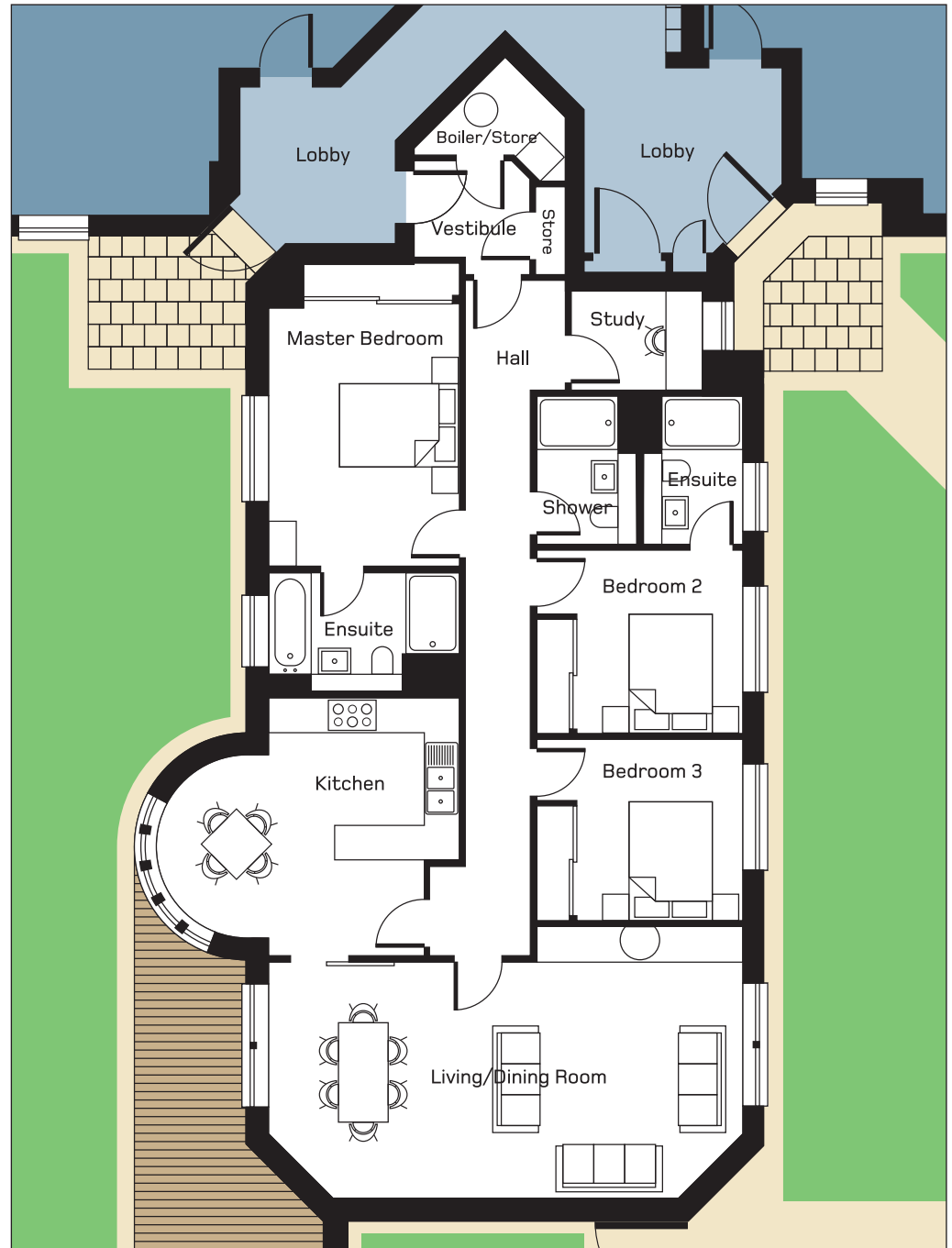
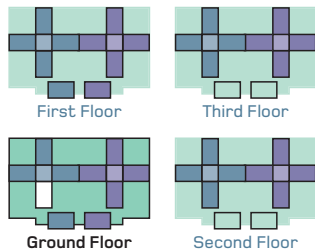
A three bedroom apartment with decked area on the ground floor.

All dimensions are to the widest points.

Metric	metres
Living/Dining Room	8.00 x 4.60
Kitchen	5.10 x 4.37
Master Bedroom	3.20 x 4.39
En suite	3.20 x 2.00
Bedroom 2	3.50 x 3.06
En suite	2.50 x 1.70
Bedroom 3	3.60 x 3.10
Shower Room	2.50 x 1.70
Study	2.21 x 1.66

Imperial	feet
Living/Dining Room	26'3" x 15'1"
Kitchen	16'9" x 14'4"
Master Bedroom	14'5" x 10'6"
En suite	10'6" x 6'7"
Bedroom 2	11'6" x 10'0"
En suite	8'2" x 5'7"
Bedroom 3	11'9" x 10'2"
Shower Room	8'2" x 5'7"
Study	7'3" x 5'6"

#### Apartment Orientation



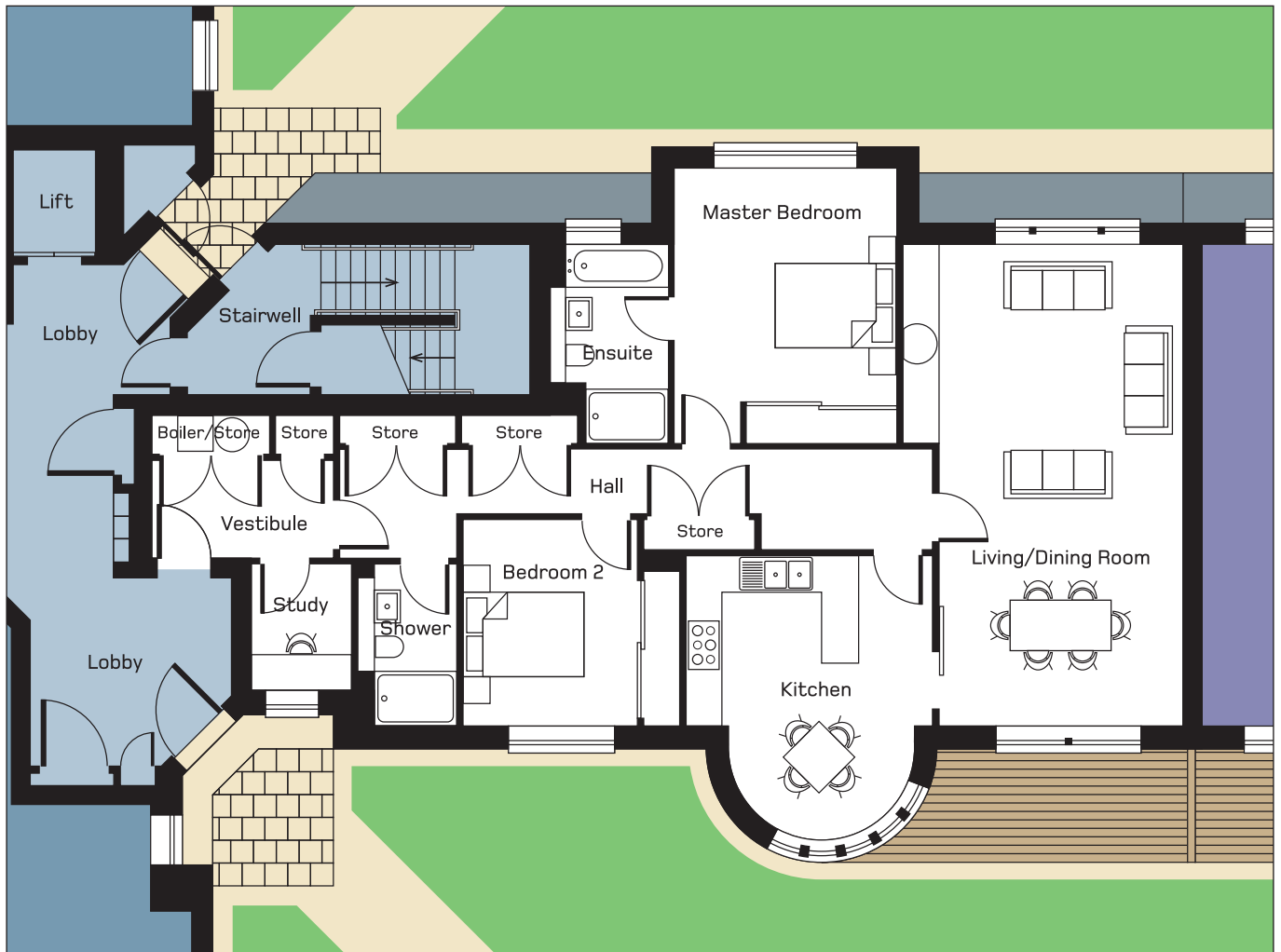
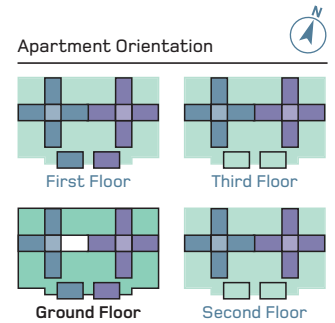
### Plot 112

#### WEST BLOCK

A two bedroom apartment with decked area on the ground floor.

All dimensions are to the widest points.

Metric	metres	Imperial	feet
Living/Dining Room	8.00 x 4.66	Living/Dining Room	15'4" x 26'3"
Kitchen	4.10 x 4.70	Kitchen	13'6" x 15'5"
Master Bedroom	4.56 x 3.71	Master Bedroom	12'2" x 15'0"
En suite	3.30 x 1.95	En suite	6'5" x 10'10"
Bedroom 2	3.40 x 2.89	Bedroom 2	9'6" x 11'2"
Shower Room	2.70 x 1.70	Shower Room	5'7" x 8'1"
Study	2.90 x 1.65	Study	5'5" x 6'1"



## Apartments 113 & 117

### WEST BLOCK

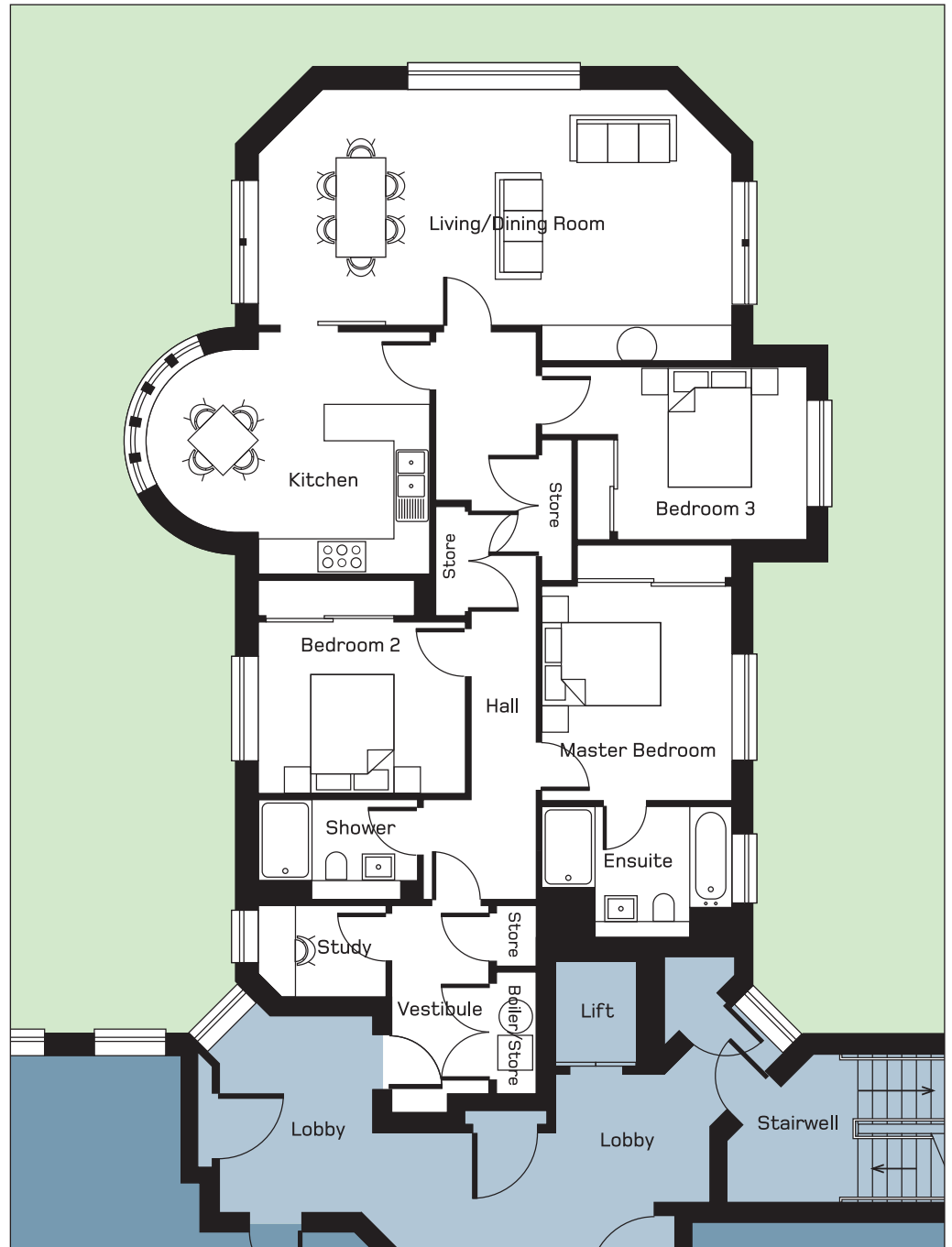
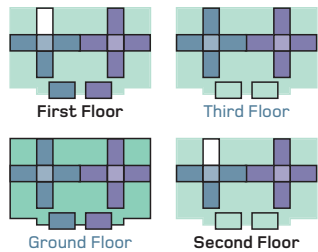
Two identical three bedroom apartments, one on the first floor and the other on the second floor.

All dimensions are to the widest points.

Metric	metres
Living/Dining Room	8.00 x 4.61
Kitchen	4.80 x 4.09
Master Bedroom	3.20 x 3.68
En suite	3.20 x 2.20
Bedroom 2	2.90 x 4.46
Bedroom 3	3.50 x 2.96
Shower Room	2.70 x 1.69
Study	2.15 x 1.52

Imperial	feet
Living/Dining Room	15'1" x 26'3"
Kitchen	15'9" x 13'5"
Master Bedroom	12'1" x 10'6"
En suite	10'6" x 7'3"
Bedroom 2	14'8" x 9'6"
Bedroom 3	11'6" x 9'9"
Shower Room	8'1" x 5'7"
Study	7'1" x 5'0"

#### Apartment Orientation

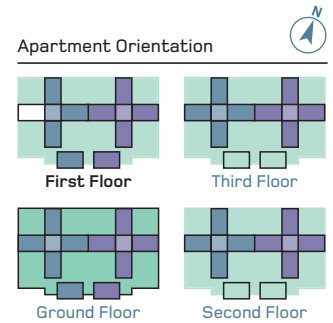


**Plot 114****WEST BLOCK**

A two bedroom apartment with decked balcony on the first floor.

All dimensions are to the widest points.

Metric	metres	Imperial	feet
Living/Dining Room	8.00 x 4.00	Living/Dining Room	13'1 x 26'3
Kitchen	3.50 x 4.09	Kitchen	11'6 x 13'5
Master Bedroom	3.20 x 4.24	Master Bedroom	10'6 x 13'11
En suite	2.00 x 3.21	En suite	6'7 x 10'7
Bedroom 2	2.92 x 3.50	Bedroom 2	9'7 x 11'6
Shower Room	2.40 x 1.74	Shower Room	5'9 x 7'10
Study	1.69 x 2.91	Study	5'7 x 9'7
Utility Room	3.33 x 2.30	Utility Room	10'11 x 7'6



## Apartment 115

### WEST BLOCK

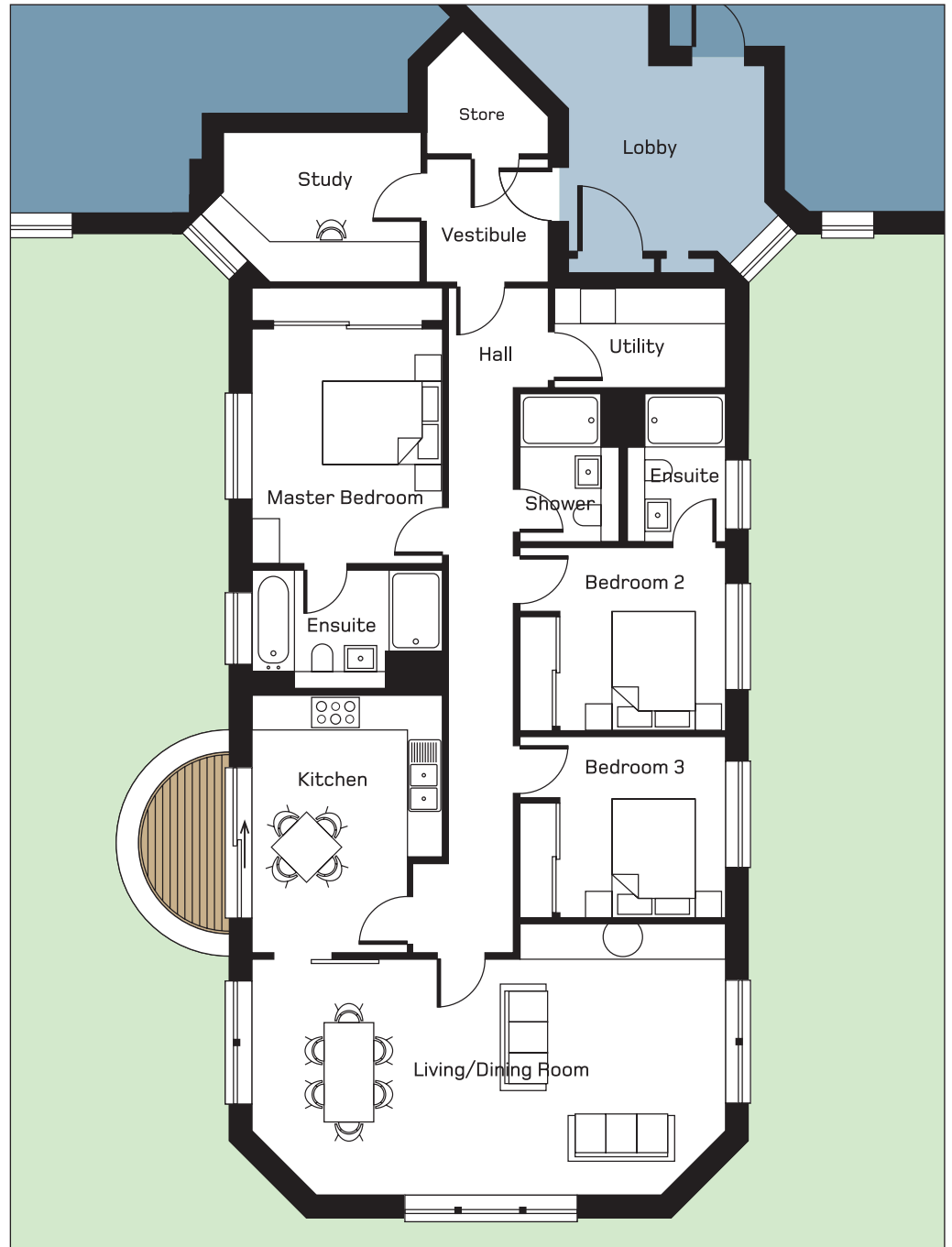
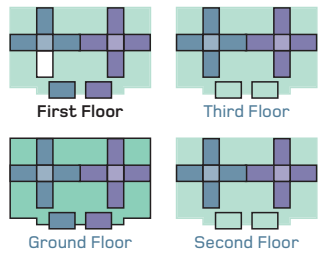
A three bedroom apartment with decked balcony on the first floor.

All dimensions are to the widest points.

Metric	metres
Living/Dining Room	8.00 x 4.60
Kitchen	3.20 x 4.37
Master Bedroom	4.06 x 3.20
En suite	3.20 x 2.00
Bedroom 2	3.50 x 3.10
En suite	1.70 x 2.49
Bedroom 3	3.50 x 3.10
Shower Room	1.70 x 2.50
Study	3.30 x 2.52

Imperial	feet
Living/Dining Room	26'3" x 15'1"
Kitchen	10'6" x 14'4"
Master Bedroom	10'6" x 13'4"
En suite	10'6" x 6'7"
Bedroom 2	11'6" x 10'2"
En suite	5'7" x 8'2"
Bedroom 3	11'6" x 10'2"
Shower Room	5'7" x 8'2"
Study	8'3" x 10'10"

#### Apartment Orientation



## Plots 116 & 120

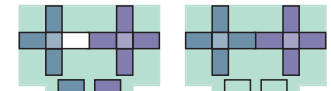
### WEST BLOCK

Two identical two bedroom apartments, one on the first floor and the other on the second floor.

All dimensions are to the widest points.

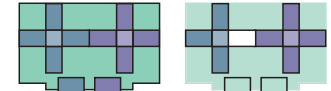
Metric	metres	Imperial	feet
Living/Dining Room	8.00 x 4.66	Living/Dining Room	15'4" x 26'3"
Kitchen	4.70 x 4.09	Kitchen	13'5" x 15'5"
Master Bedroom	4.56 x 3.71	Master Bedroom	15'0" x 12'2"
En suite	3.30 x 1.95	En suite	6'5" x 10'10"
Bedroom 2	2.83 x 3.50	Bedroom 2	11'2" x 11'6"
Shower Room	1.70 x 2.70	Shower Room	5'7" x 8'1"
Study	1.65 x 2.69	Study	5'5" x 8'1"

### Apartment Orientation



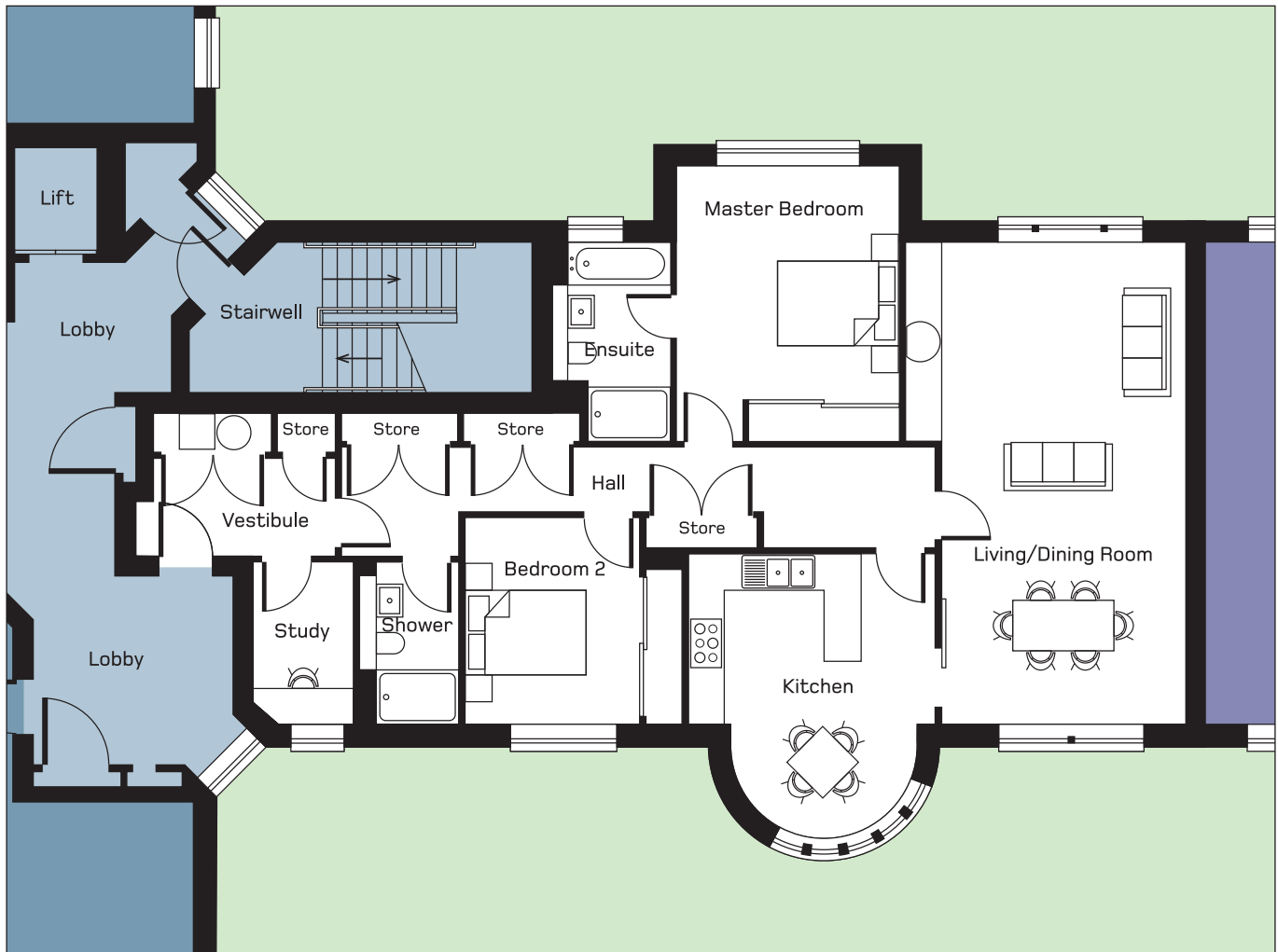
First Floor

Third Floor



Ground Floor

Second Floor





**Plot 118****WEST BLOCK**

A three/four bedroom duplex with decked balcony on the second and third floor.

All dimensions are to the widest points.

**Lower Level****SECOND FLOOR**

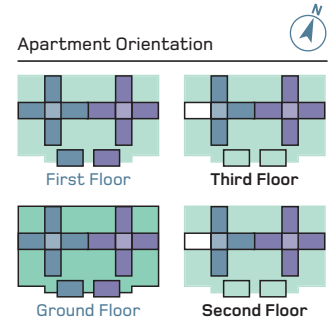
Metric	metres	Imperial	feet
Living	8.00 x 4.25	Living	26'3 x 13'11
Dining Room	3.81 x 3.19	Dining Room	12'6 x 10'5
Kitchen	3.27 x 4.66	Kitchen	15'4 x 10'9
WC	1.62 x 2.67	WC	8'9 x 5'4
Utility Room	3.33 x 2.28	Utility Room	10'11 x 7'6



### Upper Level

#### THIRD FLOOR

Metric	metres	Imperial	feet
Master Bedroom	6.10 x 3.95	Master Bedroom	20'0 x 12'11
En suite	1.96 x 3.61	En suite	6'5 x 11'10
Bedroom 2	4.88 x 3.95	Bedroom 2	16'0 x 13'0
En suite	2.09 x 2.76	En suite	9'1 x 6'1
Bedroom 3	2.74 x 3.08	Bedroom 3	10'1 x 9'0
En suite	3.08 x 2.11	En suite	10'1 x 6'11
Study/Bedroom 4	3.59 x 3.23	Study/Bedroom 4	11'9 x 10'7



## Apartment 119

### WEST BLOCK

A three/four bedroom duplex with large decked balcony on the second and third floor.

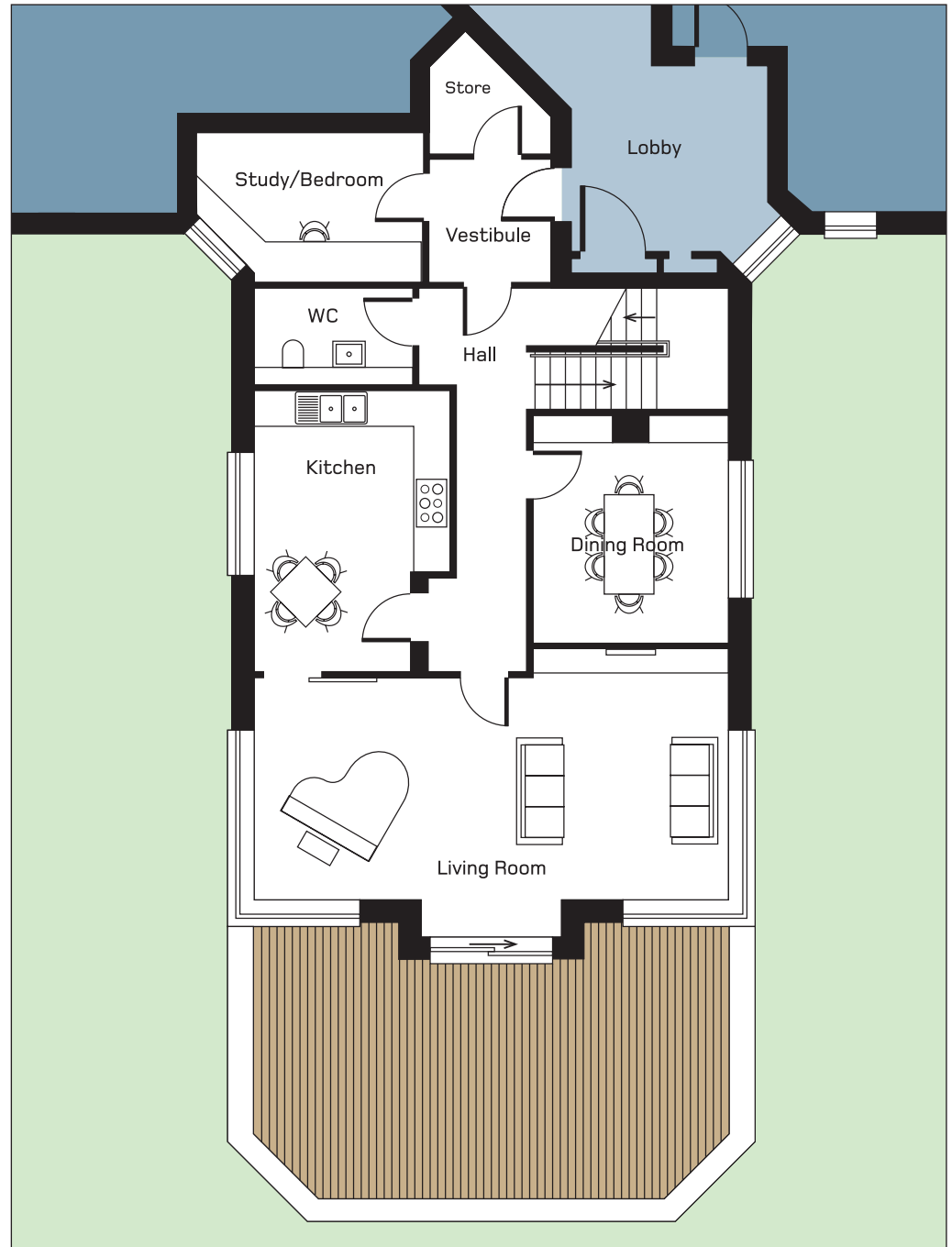
All dimensions are to the widest points.

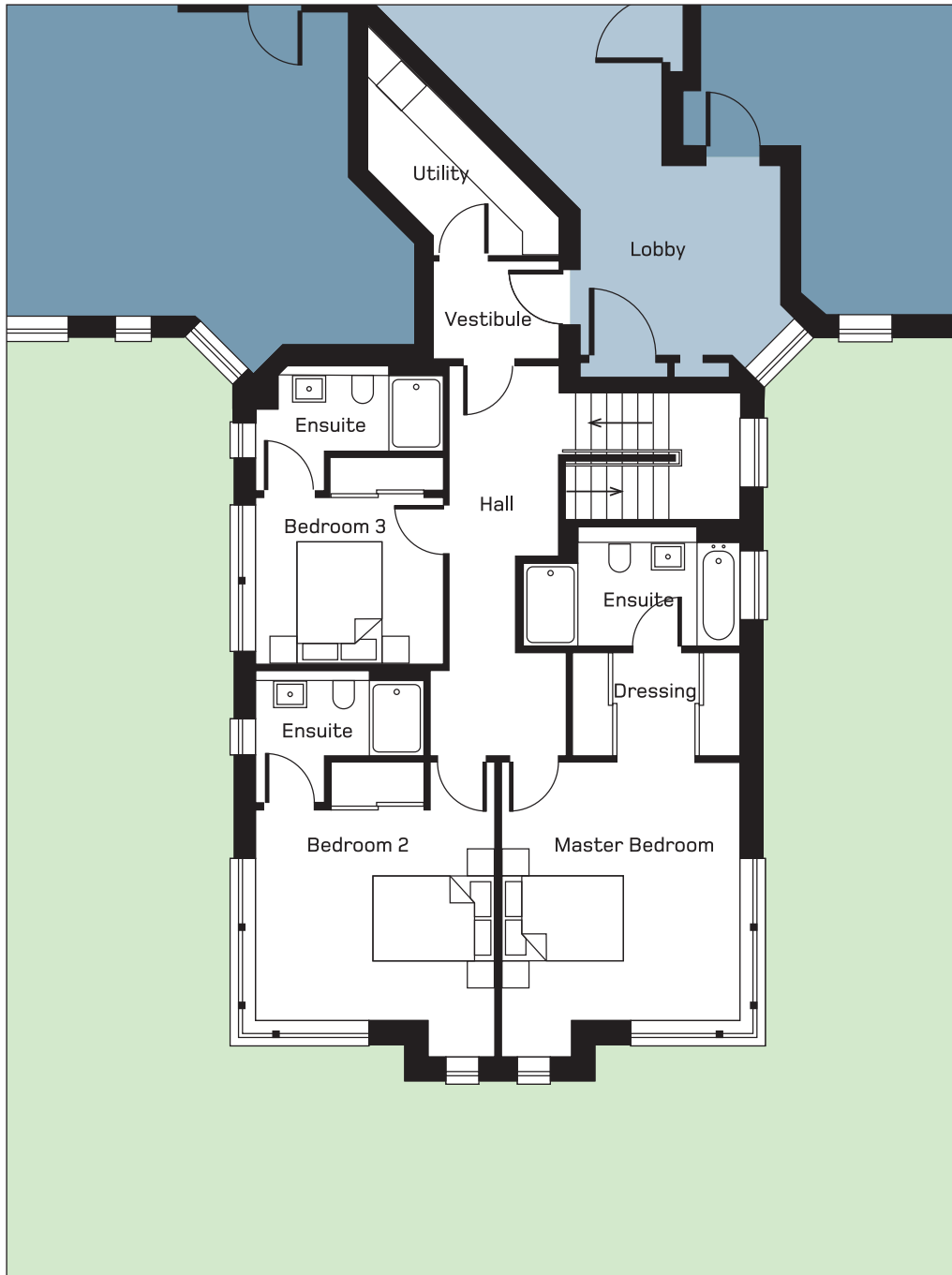
### Lower Level

#### SECOND FLOOR

Metric	metres
Living	8.00 x 4.23
Dining Room	3.37 x 3.29
Kitchen	3.23 x 4.74
Shower Room	2.67 x 1.64
Study/Bedroom 4	2.54 x 3.76

Imperial	feet
Living	26'3 x 13'11
Dining Room	11'1 x 10'10
Kitchen	10'7 x 15'7
Shower Room	8'9 x 5'5
Study/Bedroom 4	12'4 x 8'4





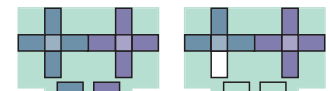
## Upper Level

### THIRD FLOOR

Metric	metres
Master Bedroom	6.00 x 3.95
En suite	1.97 x 3.57
Bedroom 2	4.88 x 3.95
En suite	2.13 x 2.76
Bedroom 3	3.08 x 2.70
En suite	2.04 x 2.76

Imperial	feet
Master Bedroom	19'8 x 13'0
En suite	11'9 x 6'6
Bedroom 2	16'0 x 13'0
En suite	7'0 x 9'1
Bedroom 3	10'1 x 8'10
En suite	9'1 x 6'8

### Apartment Orientation



First Floor

Third Floor



Ground Floor

Second Floor

## Apartment 121

### WEST BLOCK

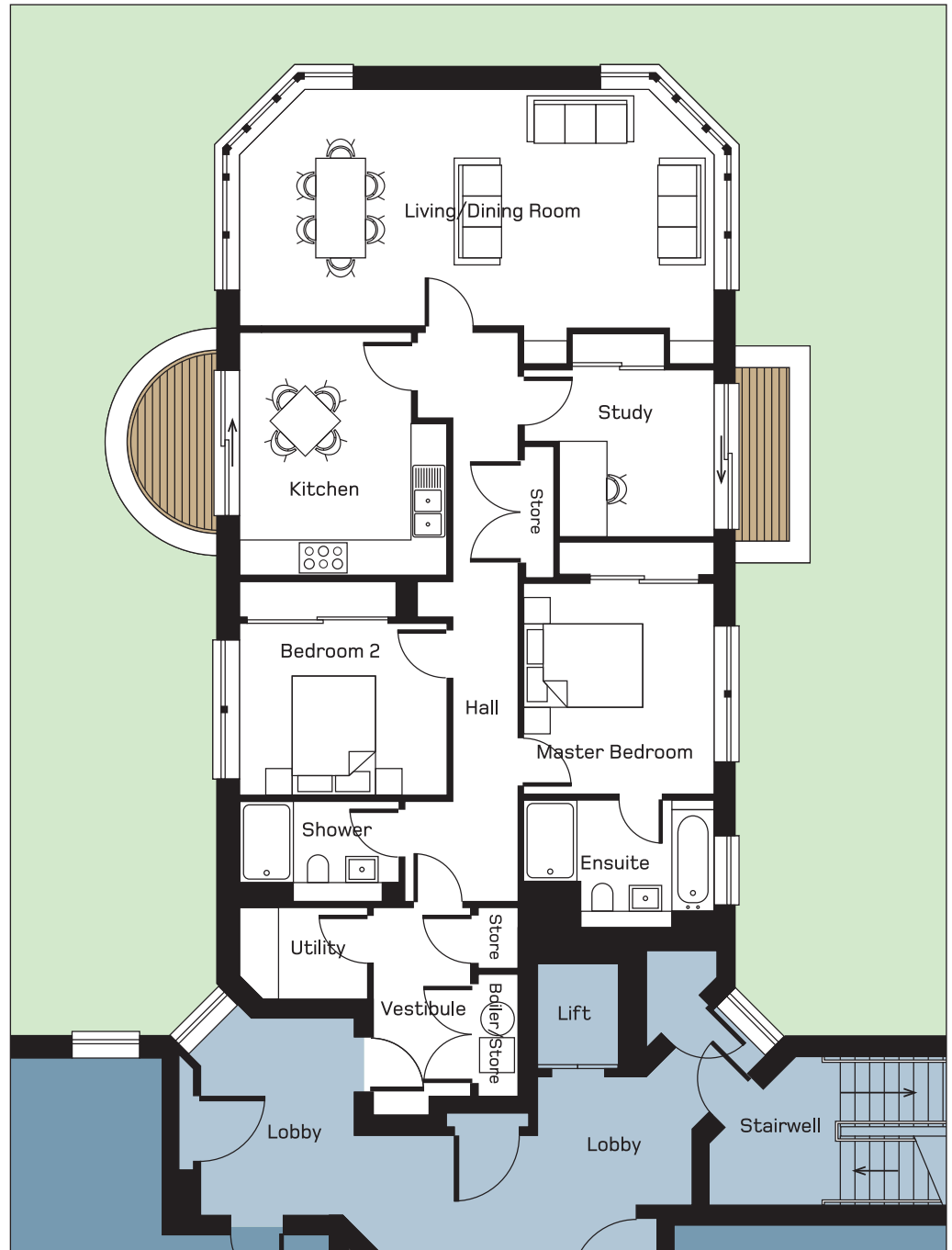
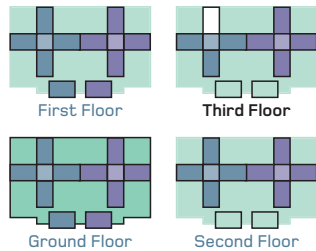
A three bedroom apartment with decked balconies on the third floor.

All dimensions are to the widest points.

Metric	metres
Living/Dining Room	8.00 x 3.98
Kitchen	4.07 x 3.50
Master Bedroom	3.20 x 3.57
En suite	3.20 x 2.33
Bedroom 2	3.50 x 2.82
Shower Room	2.71 x 1.69
Utility Room	2.15 x 1.53

Imperial	feet
Living/Dining Room	13'1" x 26'3"
Kitchen	11'6" x 13'4"
Master Bedroom	10'6" x 11'9"
En suite	10'6" x 7'8"
Bedroom 2	11'6" x 9'3"
Shower Room	5'7" x 8'11"
Utility Room	7'1" x 5'0"

### Apartment Orientation

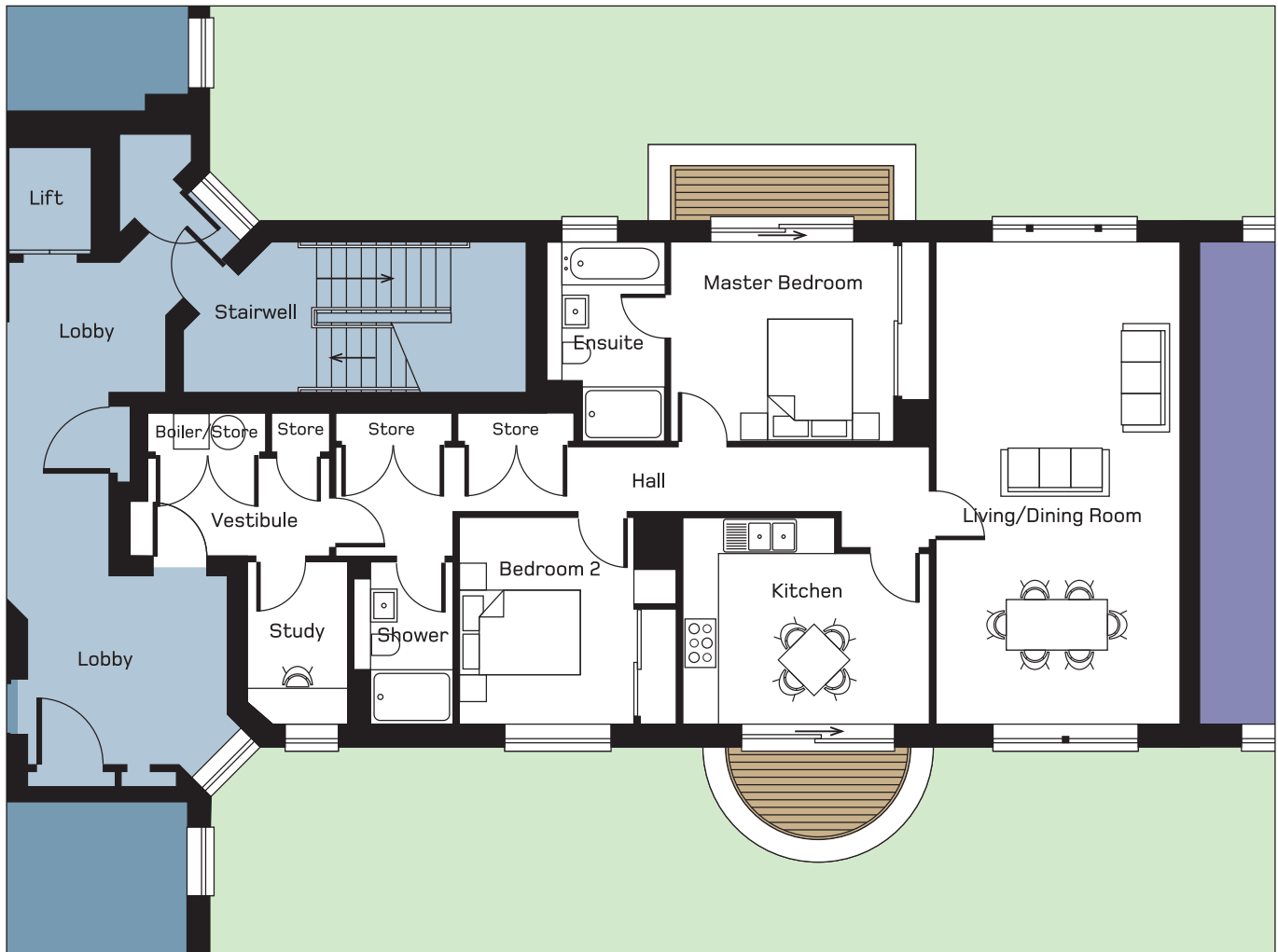
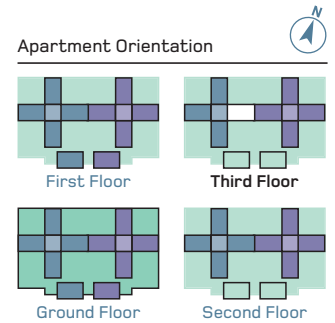


**Plot 122****WEST BLOCK**

A two bedroom apartment with decked balconies on the third floor.

All dimensions are to the widest points.

Metric	metres	Imperial	feet
Living/Dining Room	8.00 x 4.05	Living/Dining Room	13'4 x 26'3
Kitchen	4.15 x 3.40	Kitchen	11'2 x 13'7
Master Bedroom	3.33 x 3.62	Master Bedroom	11'11 x 10'10
En suite	1.99 x 3.31	En suite	6'6 x 10'11
Bedroom 2	2.73 x 3.40	Bedroom 2	9'0 x 11'2
Shower Room	1.70 x 2.70	Shower Room	8'1 x 5'7
Study	1.67 x 2.69	Study	8'1 x 5'6

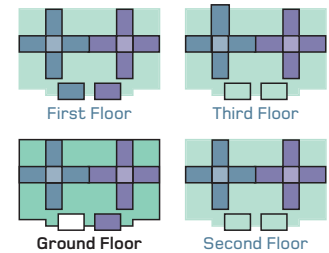


**Plot 123****WEST LODGE**

A two bedroom apartment with its own private garden on the ground floor of the West Lodge.

All dimensions are to the widest points.

Metric	metres	Imperial	feet
Living/Dining Room	8.00 x 3.90	Living/Dining Room	12'1 x 26'3
Kitchen	3.20 x 4.30	Kitchen	10'6 x 14'1
Master Bedroom	3.60 x 4.24	Master Bedroom	11'1 x 13'11
En suite	3.59 x 2.00	En suite	6'7 x 11'9
Bedroom 2	2.85 x 2.88	Bedroom 2	9'4 x 9'5
Shower Room	1.70 x 2.91	Shower Room	5'7 x 9'7
Study	3.20 x 1.60	Study	10'6 x 5'3
Utility Room	2.01 x 1.70	Utility Room	6'7 x 5'7

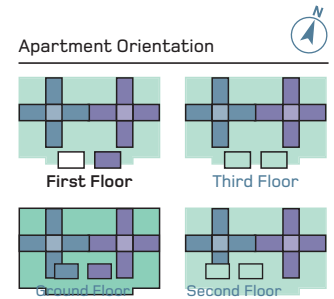
**Apartment Orientation**

**Plot 124****WEST LODGE**

A two bedroom apartment on the first floor of the West Lodge.

All dimensions are to the widest points.

Metric	metres	Imperial	feet
Living Room	4.70 x 3.82	Living Room	12'6" x 15'5"
Kitchen	3.20 x 5.20	Kitchen	17'1" x 10'6"
Master Bedroom	3.50 x 3.50	Master Bedroom	11'6" x 11'6"
En suite	2.00 x 3.50	En suite	6'7" x 11'6"
Bedroom 2	3.50 x 3.38	Bedroom 2	11'1" x 11'6"
Shower Room	2.91 x 1.79	Shower Room	5'11" x 9'7"
Utility Room	2.50 x 1.81	Utility Room	8'2" x 5'11"





## Getting here

The Caer Amon Apartments are located in Cramond, on the Forth shoreline to the North West of Edinburgh. There is easy access from the city via Queensferry Road and quick links to the motorway network and City Bypass.



For further information on The Caer Amon Apartments,  
to register your interest or to arrange a private viewing,  
please telephone 0131 226 2500.



**Selling Agents**

Phone: **0131 226 2500**

Email: **Edinburgh@struttandparker.com**

**www.struttandparker.com**



When Quality Matters

Phone: **0131 226 1780**

Email: **behnama@amanewtown.co.uk**

**www.amahomes.co.uk**

**THE CAER AMON APARTMENTS BRIGHOUSE PARK CROSS CRAMOND**