

Greencroft Gardens, South Hampstead NW6

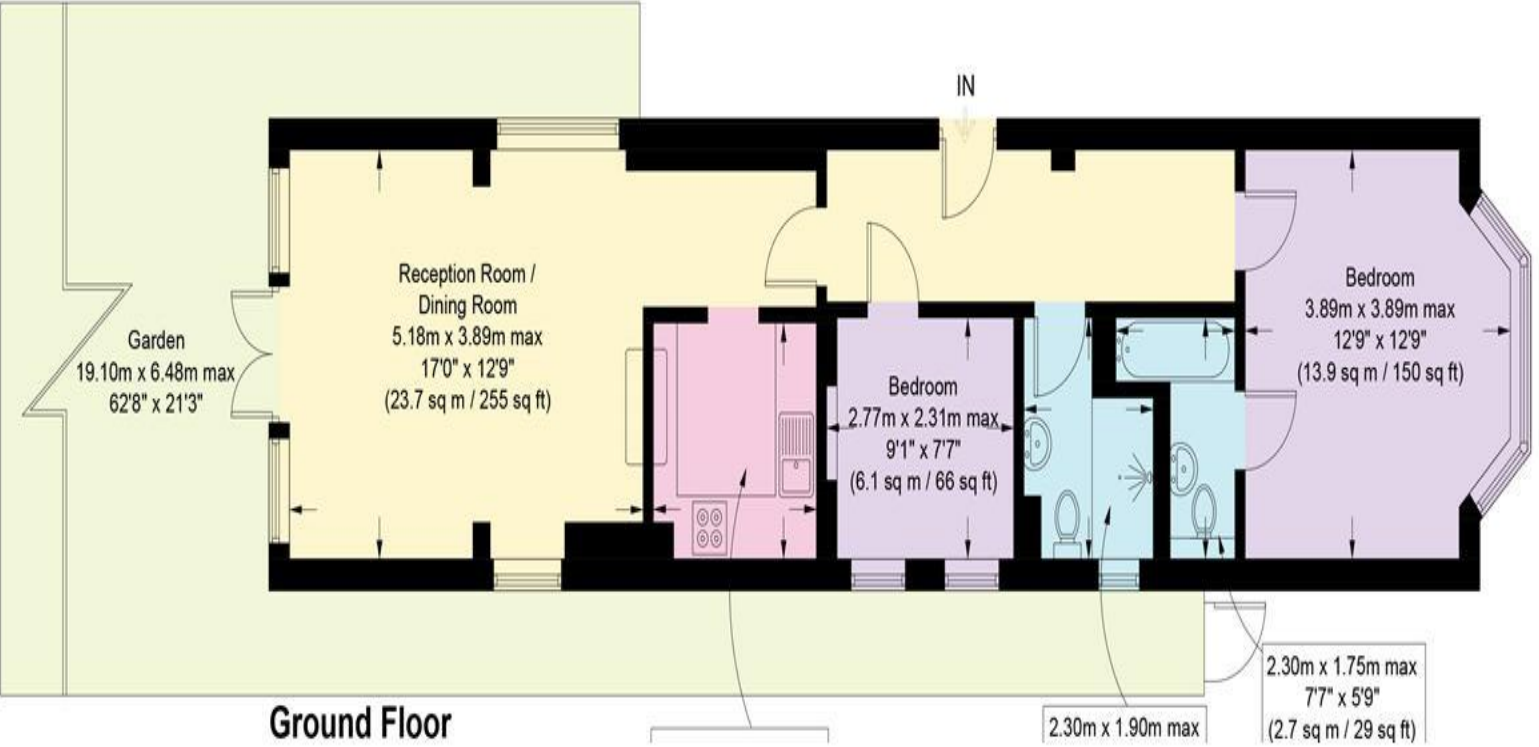


- Ground floor 2 bedroom, 2 bathroom (1 en-suite shower) flat on Greencroft Gardens
- Fitted kitchen. Superb reception with wood flooring, high ceiling and sliding doors to garden
- Available from the 20th July. Unfurnished/Not suitable for sharers
- Close to West Hampstead and Finchley Road underground and South Hampstead overground stations
- Private rear garden with patio, side access and shed
- EPC:E. Council Tax E. No consent for **pets**



Weekly Rental £650 Monthly £2816.66

Approximate Gross Internal Area
744 sq ft / 69.12 sq m



MONEY LAUNDERING REGULATIONS 2003

intending purchasers will be asked to produce identification and proof of financial status when an offer is received. We would ask for your co-operation in order that there will be no delay in agreeing the sale.
THE PROPERTY MISDESCRIPTIONS ACT 1991

The Agent has not tested any apparatus, equipment, fixtures and fittings or services and so cannot verify that they are in working order or fit for the purpose. A Buyer is advised to obtain verification from their Solicitor or Surveyor. References to the Tenure of a Property are based on information supplied by the Seller. The Agent has not had sight of the title documents. A Buyer is advised to obtain verification from their Solicitor. You are advised to check the availability of this property before travelling any distance to view. We have taken every precaution to ensure that these details are accurate and not misleading. If there is any point which is of particular importance to you, please contact us and we will provide any information you require. This is advisable, particularly if you intend to travel some distance to view the property. The mention of any appliances and services within these details does not imply that they are in full and efficient working order. These particulars are in draft form awaiting Vendors confirmation of their accuracy. These details must therefore be taken as a guide only and approved details should be requested from the agents.

Energy performance certificate (EPC)

Flat 2
100 Greencroft Gardens
LONDON
NW6 3PH

Energy rating

D

Valid until: **7 March 2032**

Certificate number: **1807-4572-4002-0007-0506**

Property type

Ground-floor flat

Total floor area

84 square metres

Rules on letting this property

Properties can be rented if they have an energy rating from A to E.

If the property is rated F or G, it cannot be let, unless an exemption has been registered. You can read [guidance for landlords on the regulations and exemptions \(https://www.gov.uk/guidance/domestic-private-rented-property-minimum-energy-efficiency-standard-landlord-guidance\)](https://www.gov.uk/guidance/domestic-private-rented-property-minimum-energy-efficiency-standard-landlord-guidance).

Energy efficiency rating for this property

This property's current energy rating is D. It has the potential to be C.

[See how to improve this property's energy performance.](#)

Score	Energy rating	Current	Potential
92+	A		
81-91	B		
69-80	C		72 C
55-68	D	57 D	
39-54	E		
21-38	F		
1-20	G		

The graph shows this property's current and potential energy efficiency.

Properties are given a rating from A (most efficient) to G (least efficient).

Properties are also given a score. The higher the number the lower your fuel bills are likely to be.

For properties in England and Wales:

the average energy rating is D
the average energy score is 60