



chantrygate

ECCLESTON



hassett
HOMES

welcome, home



*“We believe your home
should be your happy place,
where family and friends
belong, love resides and
memories are made.”*

Everything we do is guided by this belief,
that there is a better way to live, and it's my
privilege every day to help make that happen.”

JAMIE BLENNERHASSETT, MANAGING DIRECTOR



where our story begins

We believe we are all looking to build a better life. A life filled with everything and everyone that matters most. And a place to call home that brings it all together in the best possible way.

We understand how important your home is to you and it means a lot to us too. Our homes are an expression of how we want people to live. For us they are works of art for the world to see and enjoy.





This is our legacy.



We recognise that the fast pace of modern living can mean we find less time to stop and appreciate life's moments, and our environment. That's why every home we design has a sense of place, and a sense of space.

Our homes feature beautifully designed spaces that encourage a simpler, yet richer way of living – a life of joy and ease, while considering a gentler impact on the environment. This simpler approach informs everything we do.



We care about our home buyers' experience, how their home looks and feels which is as much about building a better life as it is about building a better home. This is why our homes are built on values that underpin every decision we make.


Each of us at Hassett Homes share in a strongly held belief that every new home is an opportunity to create a place with purpose that promotes a fuller and richer life.







Hassett Homes is an ecologically aware developer, so this development will have a raft of ecological enhancements, such as bird and bat boxes, hedgehog highways, and a thorough tree planting and landscaping strategy, creating new homes for nature.



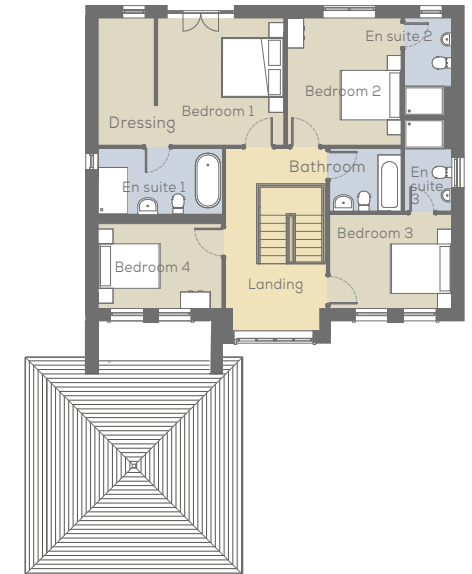
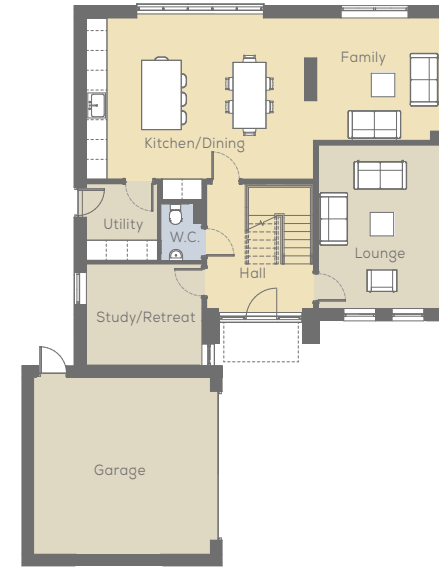
 **THE HARMAN**
4 bedroom detached home
with attached double garage

 **THE CONWAY**
4 bedroom detached home
with integrated single garage

 **THE RICHMOND**
5 bedroom detached home
with integrated double garage

the harman

4 bedroom detached home with attached double garage



GROUND FLOOR

	Metres	Feet/inches
Kitchen/Dining	6.86m x 4.90m	26'6" x 16'1"
Family	3.86m* x 3.70m*	12'8"* x 12'2"*
Lounge	4.95m x 3.68m	16'3" x 12'1"
Study/Retreat	3.54m x 3.08m	11'7" x 10"
Utility	2.34m x 2.16m	7'8" x 7'1"
Cloak Room	1.73m* x 1.30m*	5'8"* x 4'3"*
Garage	5.37m x 5.34m	17'7" x 17'6"

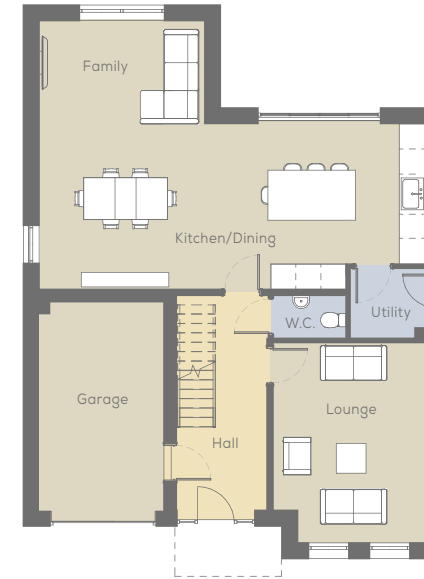
FIRST FLOOR

	Metres	Feet/inches
Bedroom 1	3.86m x 3.77m	12'8" x 12'4"
Dressing	3.86m x 1.76m	12'8" x 5'9"
En suite 1	3.64m x 2.00m	11'11" x 6'1"
Bedroom 2	3.86m x 3.47m	12'8" x 11'5"
En suite 2	2.97m* x 1.46m*	9'9"* x 4'6"*
Bedroom 3	3.74m x 2.87m	12'3" x 9'5"
En suite 3	2.80m* x 1.46m*	9'2"* x 4'9"*
Bedroom 4	3.64m x 2.59m	11'11" x 8'6"
Bathroom	2.21m x 1.91m	7'3" x 6'3"

For a full specification listing and further information please visit:
hassetthomes.com/chantrygate

the conway

4 bedroom detached home with integrated single garage



GROUND FLOOR

	Metres	Feet/inches
Kitchen/Dining	9.27m* x 4.01m*	30'5" x 13'2"
Family	3.98m x 2.49m	13'1" x 8'2"
Lounge	4.84m* x 3.67m*	15'11" x 12'0"
Utility	1.81m* x 1.70m*	5'11" x 5'7"
Cloak Room	1.81m x 1.06m	5'11" x 3'6"
Garage	5.02m* x 2.99m*	16'6" x 9'10"

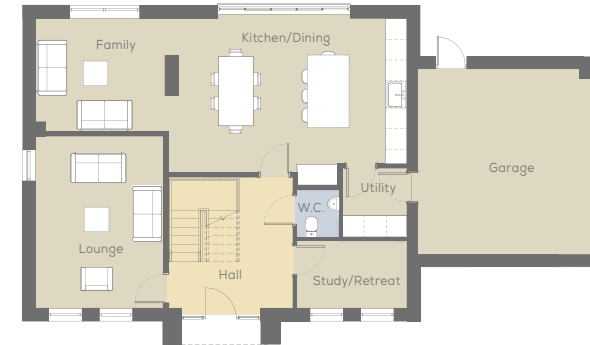
FIRST FLOOR

	Metres	Feet/inches
Bedroom 1	3.98m x 3.70m	13'1" x 12'2"
Dressing	2.50m x 1.96m	8'2" x 6'5"
En suite 1	3.98m x 1.72m	13'1" x 5'8"
Bedroom 2	3.97m* x 3.17m*	13'0" x 10'5"
En suite 2	2.86m x 1.01m	9'5" x 3'4"
Bedroom 3	4.02m x 3.16m	13'2" x 10'4"
En suite 3	3.16m* x 1.74m*	13'2" x 5'9"
Bedroom 4	3.39m x 3.18m	11'1" x 10'5"

For a full specification listing and further information please visit:
hassetthomes.com/chantrygate

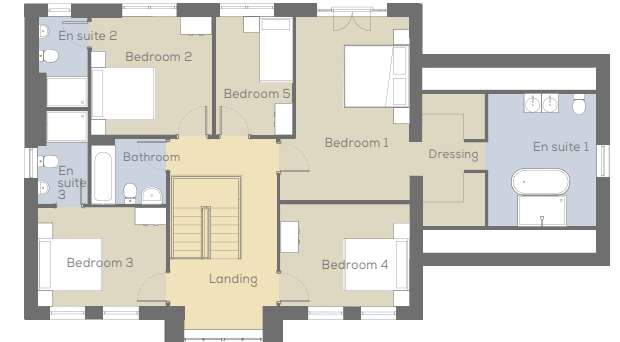
the richmond

5 bedroom detached home with integrated double garage



GROUND FLOOR

	Metres	Feet/inches
Kitchen/Dining	6.90m* x 4.47m*	22'8" x 14'8"
Family	3.84m x 3.31m	12'7" x 10'10"
Lounge	4.95m x 3.72m	16'3" x 12'2"
Study/Retreat	3.20m x 1.94m	10'6" x 6'4"
Utility	1.98m x 1.85m	6'6" x 6'0"
Cloak Room	1.36m x 1.24m	4'6" x 4'1"
Garage	5.36m* x 5.05m*	17'7" x 16'7"



FIRST FLOOR

	Metres	Feet/inches
Bedroom 1	5.28m* x 3.71m*	17'4" x 12'2"
Dressing	3.86m x 1.80m	12'8" x 5'11"
En suite 1	3.85m x 3.12m	12'8" x 10'3"
Bedroom 2	3.50m x 3.43m	11'6" x 11'3"
En suite 2	2.64m* x 1.46m*	8'8" x 4'9"
Bedroom 3	3.72m x 2.85m	12'2" x 9'4"
En suite 3	2.72m* x 1.46m*	8'11" x 4'9"
Bedroom 4	3.71m x 2.95m	12'2" x 9'8"
Bedroom 5	3.43m* x 2.24m	11'3" x 7'4"
Bathroom	2.16m* x 1.90m*	7'1" x 6'3"

For a full specification listing and further information please visit:
hassetthomes.com/chantrygate



hassett
HOMES

Chapel Lane, Eccleston, WA10 5DA

For a full specification listing and further information please visit:

hassetthomes.com/chantrygate

All images are for illustrative purposes only.