



ASKING PRICE

£159,950



THE DETAILS



2



1



1



Apartment 28, Saddle Mews

Douglas

£159,950

call in today or visit www.blackgracecowley.com for more details

e: hello@blackgracecowley.com | w: blackgracecowley.com | t: +44 (0) 1624 645555

a: 51 Victoria Street, DOUGLAS, Isle of Man, IM1 2LD

Apartment 28, Saddle Mews, Douglas





Apartment 28, Saddle Mews, Douglas



THE DESCRIPTION

- First floor retirement apartment at Saddle Mews
- Spacious Lounge/Dining Room, fitted Kitchen
- 2 Bedrooms and Shower Room
- Hardwood double glazing and gas fired central heating
- Residents car parking and communal gardens
- Minimum age of 50 years for occupation

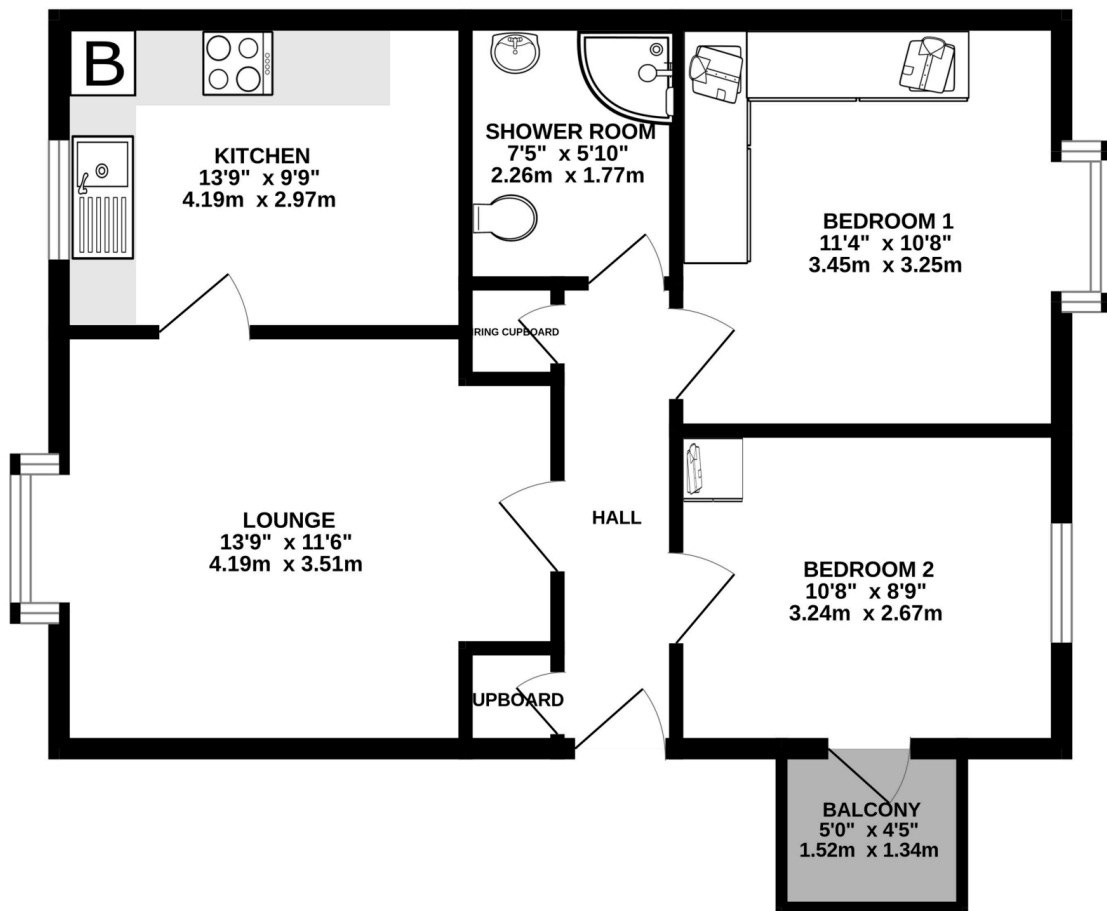
THE PROPERTY

This apartment is located in a pleasant position on this popular retirement complex offering spacious accommodation. Situated on the first floor, Apartment 28 has a spacious Entrance Hall with store cupboard and separate airing cupboard/linen cupboard. Spacious Lounge/Diner with box bay window overlooking the attractive pond in the communal gardens, doorway to Kitchen fitted with a good range of base, wall and drawer units, space for washer dryer and fridge freezer with window overlooking the gardens. Bedroom 1 is a good sized double with box bay window overlooking the front elevation, fitted wardrobes and drawer unit. Bedroom 2 is a single bedroom with window overlooking the front elevation and access to a small balcony/patio area. The Shower Room is fitted with a modern 3 piece suite comprising large shower cubicle with electric shower, pedestal wash hand basin and W.C.

Well maintained communal gardens and resident parking. Served by gas fired central heating and hardwood double glazed windows. The Management Fees are £167.74 per month.

FLOORPLAN

GROUND FLOOR
565 sq.ft. (52.4 sq.m.) approx.



TOTAL FLOOR AREA : 565 sq.ft. (52.4 sq.m.) approx.

Whilst every attempt has been made to ensure the accuracy of the floorplan contained here, measurements of doors, windows, rooms and any other items are approximate and no responsibility is taken for any error, omission or mis-statement. This plan is for illustrative purposes only and should be used as such by any prospective purchaser. The services, systems and appliances shown have not been tested and no guarantee as to their operability or efficiency can be given.
Made with Metropix ©2023



PROPERTY DETAILS FOR

Apartment 28, Saddle Mews, Douglas

Disclaimer

These particulars are for information purposes only and do not constitute or form any contract nor should any statement contained herein be relied upon as a representation of fact.

Neither the vendor nor Black Grace Cowley (the firm), nor any officer or employee of the firm accept liability or responsibility for any statement contained herein.

The vendor does not by these particulars, nor does the firm, nor does any officer or any employee of the firm have any authority to make or give any representation or warranty whatsoever as regards the property or otherwise. It is the sole responsibility of any person interested in the property described in these particulars to make all proper enquiries and searches to verify the description of the property and all other particulars herein.

e: hello@blackgracecowley.com | **w:** blackgracecowley.com | **t:** +44 (0) 1624 645555

a: 51 Victoria Street, DOUGLAS, Isle of Man, IM1 2LD