



ASKING PRICE

£159,950

THE DETAILS



Apartment 97, Saddle Mews
Douglas
£159,950

call in today or visit www.blackgracecowley.com for more details

e: hello@blackgracecowley.com | w: blackgracecowley.com | t: +44 (0) 1624 645555

a: 51 Victoria Street, DOUGLAS, Isle of Man, IM1 2LD

Apartment 97, Saddle Mews, Douglas



e: hello@blackgracecowley.com | w: blackgracecowley.com | t: +44 (0) 1624 645555

a: 51 Victoria Street, DOUGLAS, Isle of Man, IM1 2LD

Apartment 97, Saddle Mews, Douglas



Apartment 97, Saddle Mews, Douglas





PROPERTY DETAILS FOR

Apartment 97, Saddle Mews, Douglas

THE DESCRIPTION

- Highly desirable ground floor purpose built apartment
- Popular sheltered development for occupiers of 50 years of age and over
- Within walking distance to the bus route
- Open Living/Dining room, separate Kitchen
- Large double Bedroom and Shower Room
- Patio doors from the Living Room to paved patio
- Overlooking communal landscaped gardens and ponds
- Reserved parking space

THE PROPERTY

Black Grace Cowley are delighted to bring to the market 97 Saddle Mews. This apartment is located in a pleasant position on this popular retirement complex offering spacious accommodation. Situated on the ground floor, Apartment 97 has a spacious Entrance Hall with store cupboard, spacious Lounge/Diner with patio doors leading to a private paved patio overlooking the attractive ponds in the communal gardens. Doorway to Kitchen fitted with a good range of base, wall and drawer units, space for fridge freezer with window overlooking the gardens. The Bedroom is a good sized bright and airy double with fitted double wardrobes. The Shower Room is fitted with a 3 piece suite comprising large shower cubicle with electric shower, pedestal wash hand basin and W.C. space and plumbing for washing machine.

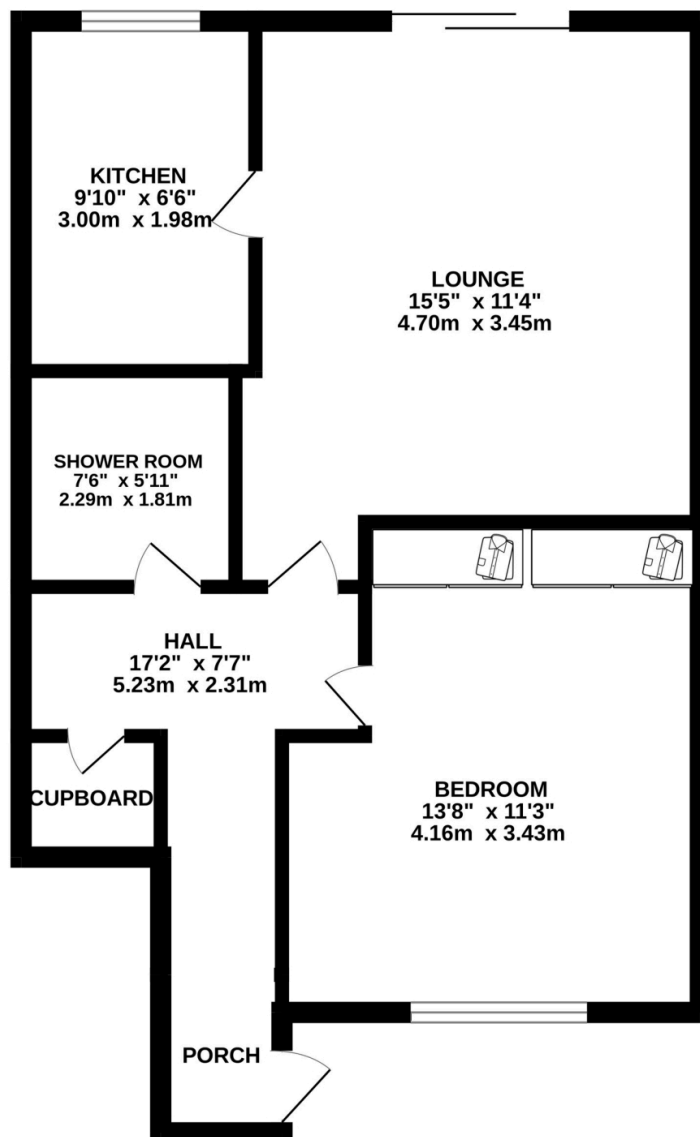
Well maintained communal gardens and resident parking. Served by gas fired central heating uPVC double glazed windows. The Management Fees are 160 per month. Government Rates are £420 and Douglas Rates £454.

e: hello@blackgracecowley.com | **w:** blackgracecowley.com | **t:** +44 (0) 1624 645555

a: 51 Victoria Street, DOUGLAS, Isle of Man, IM1 2LD

FLOORPLAN

GROUND FLOOR
515 sq.ft. (47.8 sq.m.) approx.



TOTAL FLOOR AREA : 515 sq.ft. (47.8 sq.m.) approx.

Whilst every attempt has been made to ensure the accuracy of the floorplan contained here, measurements of doors, windows, rooms and any other items are approximate and no responsibility is taken for any error, omission or mis-statement. This plan is for illustrative purposes only and should be used as such by any prospective purchaser. The services, systems and appliances shown have not been tested and no guarantee as to their operability or efficiency can be given.
Made with Metropix ©2024

e: hello@blackgracecowley.com | **w:** blackgracecowley.com | **t:** +44 (0) 1624 645555

a: 51 Victoria Street, DOUGLAS, Isle of Man, IM1 2LD



PROPERTY DETAILS FOR

Apartment 97, Saddle Mews, Douglas

Disclaimer

These particulars are for information purposes only and do not constitute or form any contract nor should any statement contained herein be relied upon as a representation of fact.

Neither the vendor nor Black Grace Cowley (the firm), nor any officer or employee of the firm accept liability or responsibility for any statement contained herein.

The vendor does not by these particulars, nor does the firm, nor does any officer or any employee of the firm have any authority to make or give any representation or warranty whatsoever as regards the property or otherwise. It is the sole responsibility of any person interested in the property described in these particulars to make all proper enquiries and searches to verify the description of the property and all other particulars herein.

e: hello@blackgracecowley.com | **w:** blackgracecowley.com | **t:** +44 (0) 1624 645555

a: 51 Victoria Street, DOUGLAS, Isle of Man, IM1 2LD