



ASKING PRICE

£2,950,000

### THE DETAILS

 4     3     4



**Ballaveare Farm, Old Castletown Road  
Port Soderick  
£2,950,000**

call in today or visit [www.blackgracecowley.com](http://www.blackgracecowley.com) for more details

e: [hello@blackgracecowley.com](mailto:hello@blackgracecowley.com) | w: [blackgracecowley.com](http://blackgracecowley.com) | t: +44 (0) 1624 645555

a: 51 Victoria Street, DOUGLAS, Isle of Man, IM1 2LD







# Ballaveare Farm, Old Castletown Road, Port Soderick





PROPERTY DETAILS FOR

# Ballaveare Farm, Old Castletown Road, Port Soderick

## THE DESCRIPTION

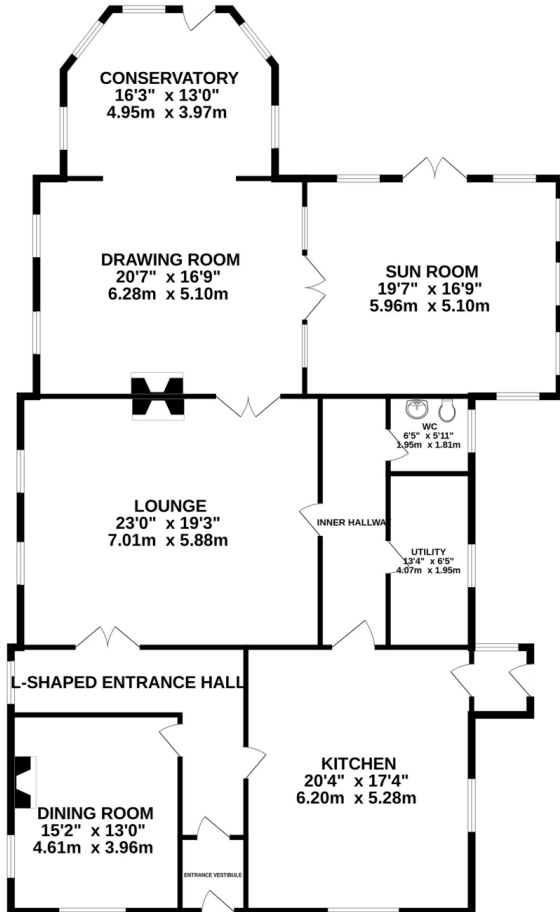
- Unique detached residence constructed in period style set in a lovely position
- Ideally situated on the outskirts of Douglas but only ten minutes from the airport
- Entrance Vestibule, large L-shaped Entrance Hall, Dining Room, Lounge
- Drawing Room, Sun Room, Conservatory, Breakfast Kitchen, Utility, Cloakroom
- Master Bedroom with large En Suite Bathroom, 2nd Bedroom with En Suite Shower Room
- 3rd Bedroom with Dressing Room, 4th Bedroom and Family Bathroom
- Oil fired central heating. Fully double glazed
- Professionally landscaped gardens and paddocks
- Large detached storage Shed, suitable for conversion to stables
- Surrounded by 11 acres of farmland with stunning sea views

**e:** [hello@blackgracecowley.com](mailto:hello@blackgracecowley.com) | **w:** [blackgracecowley.com](http://blackgracecowley.com) | **t:** +44 (0) 1624 645555

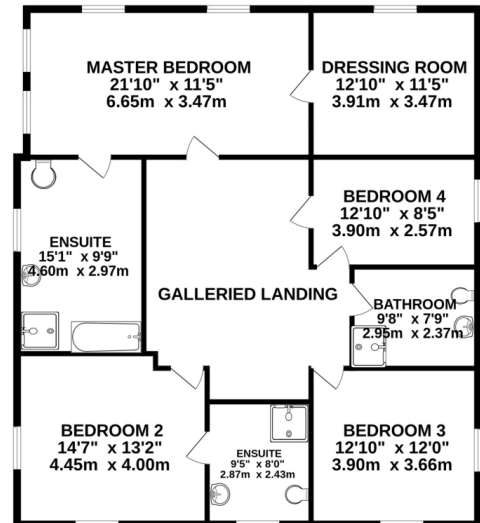
**a:** 51 Victoria Street, DOUGLAS, Isle of Man, IM1 2LD

# FLOORPLAN

GROUND FLOOR  
2258 sq.ft. (209.8 sq.m.) approx.



1ST FLOOR  
1393 sq.ft. (129.4 sq.m.) approx.



TOTAL FLOOR AREA : 3651 sq.ft. (339.2 sq.m.) approx.

Whilst every attempt has been made to ensure the accuracy of the floorplan contained here, measurements of doors, windows, rooms and any other items are approximate and no responsibility is taken for any error, omission or mis-statement. This plan is for illustrative purposes only and should be used as such by any prospective purchaser. The services, systems and appliances shown have not been tested and no guarantee as to their operability or efficiency can be given.  
Made with Metropix ©2023

# SITE PLAN



PROPERTY DETAILS FOR

## Ballaveare Farm, Old Castletown Road, Port Soderick

Google Maps



Imagery ©2023 CNES / Airbus, Isle of Man Government, Maxar Technologies, Map data ©2023 50 m



PROPERTY DETAILS FOR

e: [hello@blackgracecowley.com](mailto:hello@blackgracecowley.com) | w: [blackgracecowley.com](http://blackgracecowley.com) | t: +44 (0) 1624 645555.  
**Ballaveare Farm, Old Castletown Road, Port Soderick**  
a: 51 Victoria Street, DOUGLAS, Isle of Man, IM1 2LD



## Disclaimer

These particulars are for information purposes only and do not constitute or form any contract nor should any statement contained herein be relied upon as a representation of fact.

Neither the vendor nor Black Grace Cowley (the firm), nor any officer or employee of the firm accept liability or responsibility for any statement contained herein.

The vendor does not by these particulars, nor does the firm, nor does any officer or any employee of the firm have any authority to make or give any representation or warranty whatsoever as regards the property or otherwise. It is the sole responsibility of any person interested in the property described in these particulars to make all proper enquiries and searches to verify the description of the property and all other particulars herein.

**e:** [hello@blackgracecowley.com](mailto:hello@blackgracecowley.com) | **w:** [blackgracecowley.com](http://blackgracecowley.com) | **t:** +44 (0) 1624 645555

**a:** 51 Victoria Street, DOUGLAS, Isle of Man, IM1 2LD