



PER MONTH
£2,500 Per Month

THE DETAILS

 5  2  1



35a North Quay
, Douglas

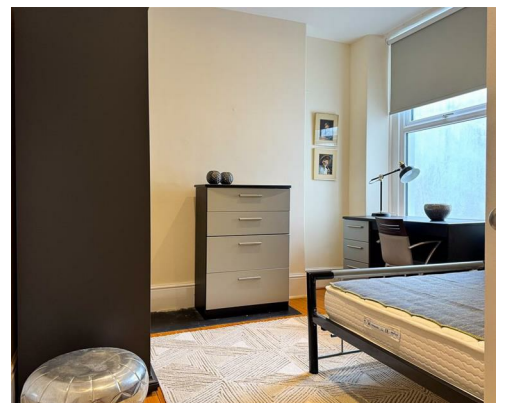
£2,500 Per Month

call in today or visit www.blackgracecowley.com for more details

e: hello@blackgracecowley.com | w: www.blackgracecowley.com | t: +44 (0) 1624 645 555

a: 51 Victoria Street, DOUGLAS, Isle of Man, IM1 2LD

PROPERTY DETAILS FOR
35a North Quay, , Douglas





PROPERTY DETAILS FOR

35a North Quay, , Douglas

THE DESCRIPTION

THE PROPERTY



PROPERTY DETAILS FOR

35a North Quay, , Douglas

e: hello@blackgracecowley.com | w. blackgracecowley.com | t: +44 (0) 1624 645 555

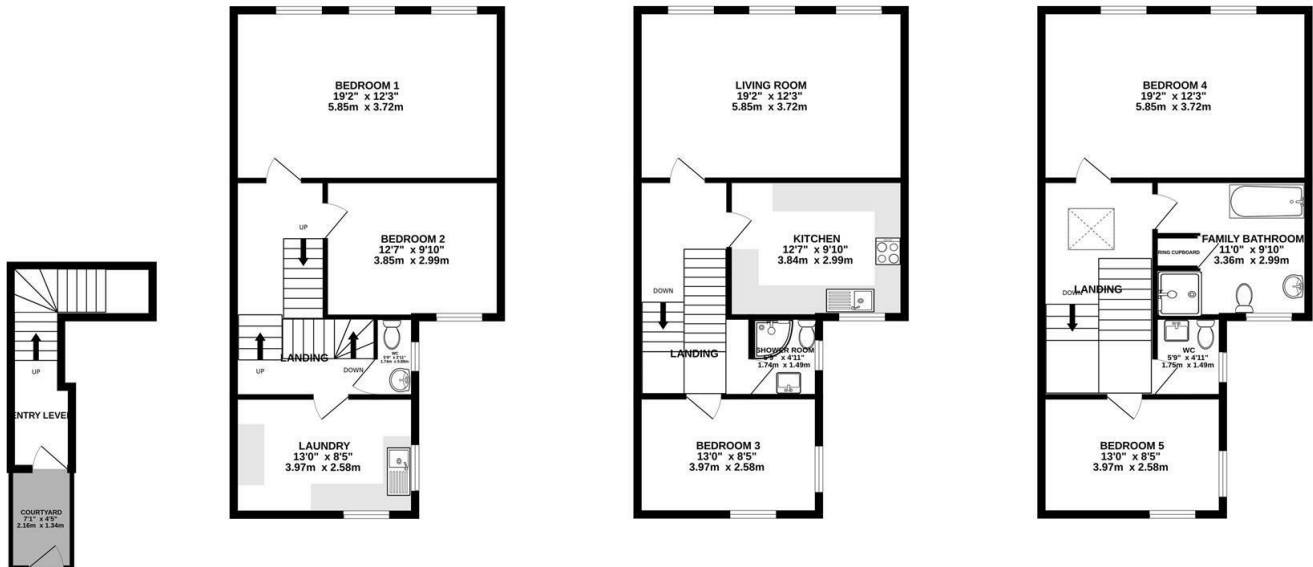
a: 51 Victoria Street, DOUGLAS, Isle of Man, IM1 2LD

FLOOR PLAN

BUILDING FIRST FLOOR
689 sq.ft. (64.0 sq.m.) approx.

2ND FLOOR
608 sq.ft. (56.4 sq.m.) approx.

TOP FLOOR
608 sq.ft. (56.4 sq.m.) approx.



TOTAL FLOOR AREA: 1904 sq.ft. (176.9 sq.m.) approx.

Whilst every attempt has been made to ensure the accuracy of the floorplan contained here, measurements of doors, windows, rooms and any other items are approximate and no responsibility is taken for any error, omission or mis-statement. This plan is for illustrative purposes only and should be used as such by any prospective purchaser. The services, systems and appliances shown have not been tested and no guarantee as to their operability or efficiency can be given.
Made with Metropix ©2024