

PER MONTH

£1,100 Per Month

THE DETAILS



Apartment 28 Millennium Court

Queens Promenade, Douglas

£1,100 Per Month

call in today or visit www.blackgracecowley.com for more details

e: hello@blackgracecowley.com | w: www.blackgracecowley.com | t: +44 (0) 1624 645 555

a: 51 Victoria Street, DOUGLAS, Isle of Man, IM1 2LD

Apartment 28 Millennium Court, Queens

Douglas, Douglas





PROPERTY DETAILS FOR

Apartment 28 Millennium Court, Queens

Douglas, Douglas

THE DESCRIPTION

THE PROPERTY

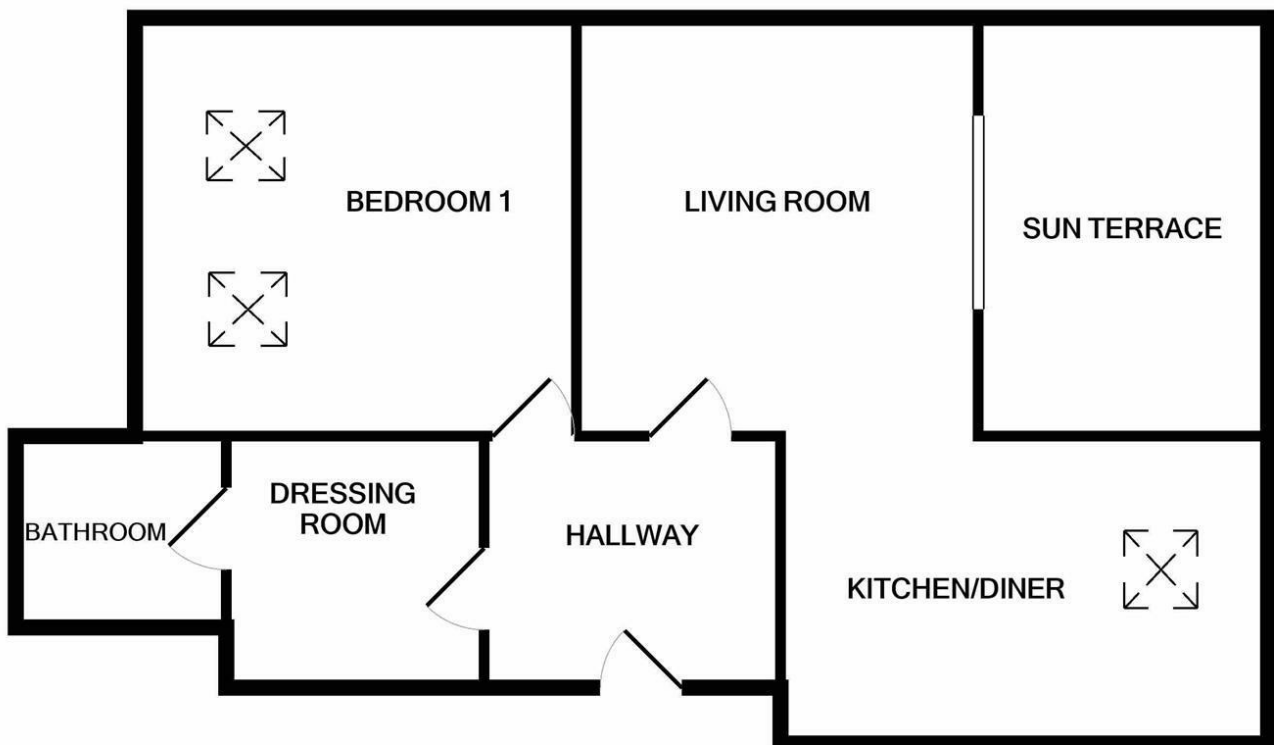


PROPERTY DETAILS FOR

Apartment 28 Millennium Court, Queens

Douglas, Douglas

FLOOR PLAN



Whilst every attempt has been made to ensure the accuracy of the floor plan contained here, measurements of doors, windows, rooms and any other items are approximate and no responsibility is taken for any error, omission, or mis-statement. This plan is for illustrative purposes only and should be used as such by any prospective purchaser. The services, systems and appliances shown have not been tested and no guarantee as to their operability or efficiency can be given
Made with Metropix ©2021