



ASKING PRICE

£695,000



THE DETAILS



3



1



3



Rhen Valla

Gansev Point, Port St Mary

£695,000

call in today or visit www.blackgracecowley.com for more details

e: hello@blackgracecowley.com | w: blackgracecowley.com | t: +44 (0) 1624 645555

a: 51 Victoria Street, DOUGLAS, Isle of Man, IM1 2LD











Rhen Valla, Gansey Point, Port St Mary



THE DESCRIPTION

- Elevated seaside home just yards from Chapel Beach in Port St Mary
- Large bay fronted Lounge with terrace and sea views, separate Office Space
- Modern contemporary Kitchen Diner with access to a covered terrace, Utility Room
- 3 Bedrooms, modern Shower Room with separate WC
- Front and Rear gardens and Detached Garage
- Period house full of art deco character, constructed 1937
- No onward chain

THE PROPERTY

Black Grace Cowley are privileged to offer to the market Rhen Valla, which is situated just a stone's throw from Chapel Beach in Port St Mary. The property offers spectacular panoramic views across the bay towards Port St Mary and the Harbour entrance with the views continuing round to rear towards Castletown and Langness. Built in 1937 this spacious semi-detached art deco home is sat in an elevated position gaining plenty of natural light on all three levels.

Upon entering the property there is a gated footpath with steps leading up to the entrance porch, the entrance porch takes you through into a spacious entrance hall with winding staircase up to the first floor. Off the entrance hall there is access into the properties lounge, which is a spacious living area with a square bay window to the front with panoramic views out to sea, there is a door giving access out to a private terrace at that level. Also, off the entrance hall is a dining room situated to the rear of the property with feature log burner and an arched bay window looking onto the properties garden, the dining room offers access to what could be used as an office/study space to the rear leading onto the rear porch which gives access out to the garden.

At the lower level is a hallway area with a utility room off which has space and plumbing for a washing machine and houses the wall mounted gas combination boiler. Continuing through the hall, leading into the large open plan kitchen/diner living space with a range of modern wall and base units, integrated appliances, tiled floors, double glazed windows and double glazed door leading out to a covered terraced area which then leads out onto the property's front garden.



PROPERTY DETAILS FOR

Rhen Valla, Gansey Point, Port St Mary

Taking the stairs from the entrance hall up to the first floor, there are three bedrooms, with the master being situated at the front of the property taking advantage of some of the best views. Bedroom 2 situated to the rear, again a large double bedroom with views across the neighbouring agricultural fields to the rear and out to Langness. Bedroom 3 is also situated to the rear with similar views. There is a recently modernised family shower room with a large walk-in shower, wash hand basin and heated towel rail and separate WC. Bright and spacious galleried landing area. The property itself boasts many features including an original staircase, terracing and character, which all make for a fairly unique coastal home. Externally, the property has gardens to the rear with steps up to a large patio which is secluded with mature borders and hedging, there is a greenhouse to the far end and views over the neighbouring fields. Sunken patio area with stone walls offering total privacy. In addition to the garden space there is the benefit of a detached garage offering private parking. Rhen Valla offers a truly unique opportunity to purchase an art deco home in an enviable position in the South of the island. To appreciate the views, light and space on offer, a viewing is essential.

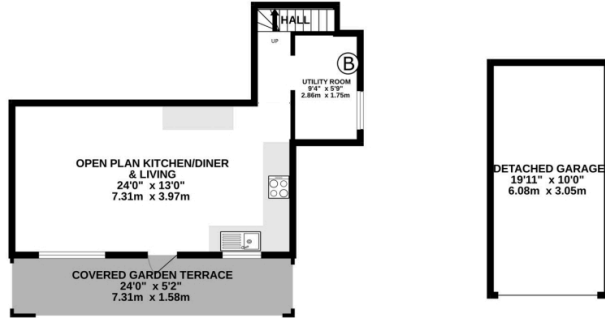
Gas fired central heating. Double glazed throughout with the additional benefit of two open fireplaces.

e: hello@blackgracecowley.com | **w:** blackgracecowley.com | **t:** +44 (0) 1624 645555

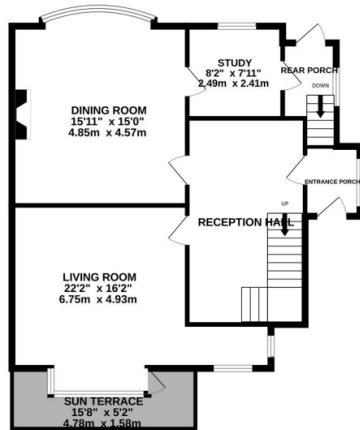
a: 51 Victoria Street, DOUGLAS, Isle of Man, IM1 2LD

FLOORPLAN

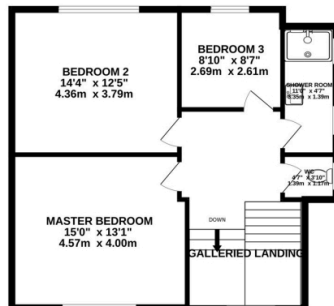
LOWER GROUND FLOOR
602 sq.ft. (55.9 sq.m.) approx.



GROUND FLOOR
796 sq.ft. (74.0 sq.m.) approx.



1ST FLOOR
677 sq.ft. (62.9 sq.m.) approx.



TOTAL FLOOR AREA : 2075 sq.ft. (192.8 sq.m.) approx.

Whilst every attempt has been made to ensure the accuracy of the floorplan contained here, measurements of doors, windows, rooms and any other items are approximate and no responsibility is taken for any error, omission or mis-statement. This plan is for illustrative purposes only and should be used as such by any prospective purchaser. The services, systems and appliances shown have not been tested and no guarantee as to their operability or efficiency can be given.
Made with Metropix ©2024



PROPERTY DETAILS FOR

Rhen Valla, Gansey Point, Port St Mary

Disclaimer

These particulars are for information purposes only and do not constitute or form any contract nor should any statement contained herein be relied upon as a representation of fact.

Neither the vendor nor Black Grace Cowley (the firm), nor any officer or employee of the firm accept liability or responsibility for any statement contained herein.

The vendor does not by these particulars, nor does the firm, nor does any officer or any employee of the firm have any authority to make or give any representation or warranty whatsoever as regards the property or otherwise. It is the sole responsibility of any person interested in the property described in these particulars to make all proper enquiries and searches to verify the description of the property and all other particulars herein.

e: hello@blackgracecowley.com | **w:** blackgracecowley.com | **t:** +44 (0) 1624 645555

a: 51 Victoria Street, DOUGLAS, Isle of Man, IM1 2LD