

£929,500

THE DETAILS



Ballacubbon Farm Grenaby Road

Ballabeg,

£929,500

call in today or visit www.blackgracecowley.com for more details

e: hello@blackgracecowley.com | w: www.blackgracecowley.com | t: +44 (0) 1624 645 555

a: 51 Victoria Street, DOUGLAS, Isle of Man, IM1 2LD





PROPERTY DETAILS FOR

Ballacubbon Farm Grenaby Road, Ballabeg,

THE DESCRIPTION

THE PROPERTY



PROPERTY DETAILS FOR

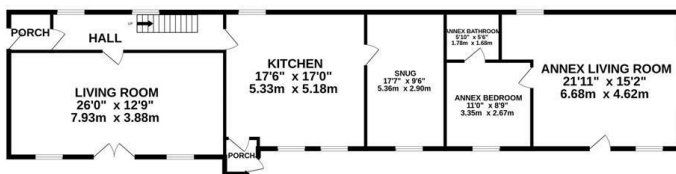
Ballacubbon Farm Grenaby Road, Ballabeg,

e: hello@blackgracecowley.com | **w:** www.blackgracecowley.com | **t:** +44 (0) 1624 645 555

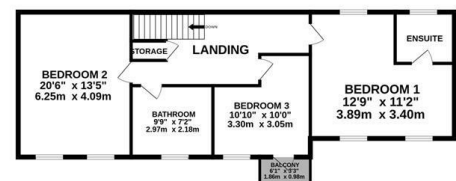
a: 51 Victoria Street, DOUGLAS, Isle of Man, IM1 2LD

FLOOR PLAN

GROUND FLOOR
1371 sq.ft. (127.4 sq.m.) approx.



1ST FLOOR
880 sq.ft. (81.8 sq.m.) approx.



TOTAL FLOOR AREA : 2251 sq.ft. (209.2 sq.m.) approx.

Whilst every attempt has been made to ensure the accuracy of the floorplan contained here, measurements of doors, windows, rooms and any other items are approximate and no responsibility is taken for any error, omission or mis-statement. This plan is for illustrative purposes only and should be used as such by any prospective purchaser. The services, systems and appliances shown have not been tested and no guarantee as to their operability or efficiency can be given.
Made with Metropix ©2024