

PER MONTH

£1,400 Per Month

THE DETAILS



3



2



1



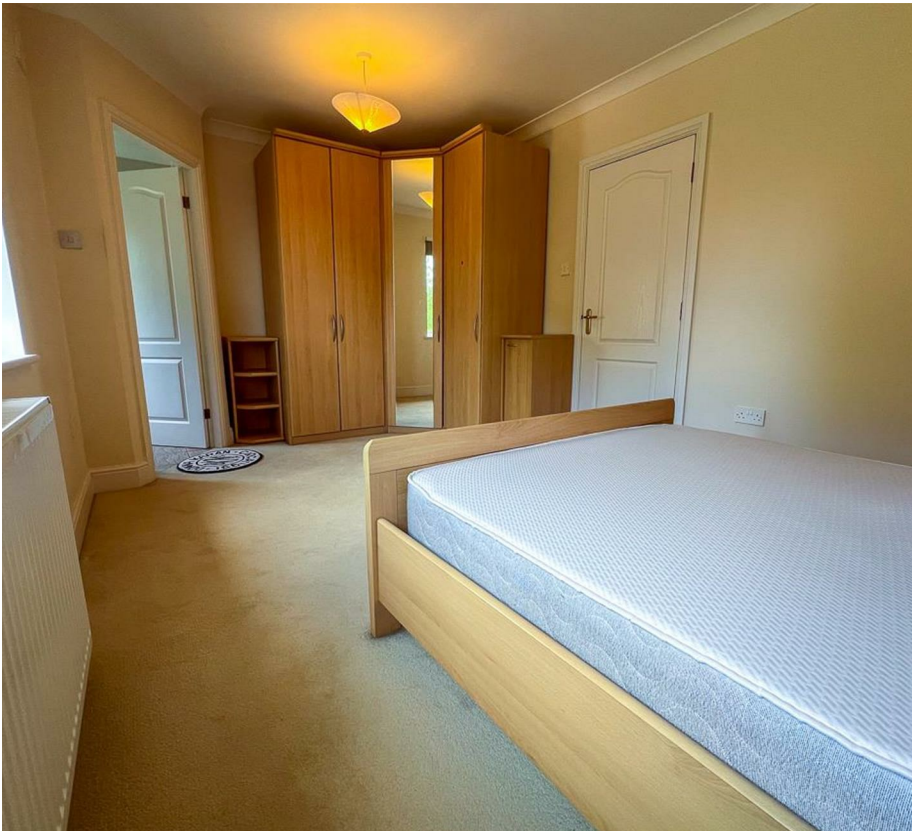
**The Hollows Victoria Road
, Douglas**

£1,400 Per Month

call in today or visit www.blackgracecowley.com for more details

e: hello@blackgracecowley.com | w: www.blackgracecowley.com | t: +44 (0) 1624 645 555

a: 51 Victoria Street, DOUGLAS, Isle of Man, IM1 2LD





PROPERTY DETAILS FOR

The Hollows Victoria Road, , Douglas

THE DESCRIPTION

THE PROPERTY

e: hello@blackgracecowley.com | w. blackgracecowley.com | t: +44 (0) 1624 645 555

a: 51 Victoria Street, DOUGLAS, Isle of Man, IM1 2LD



PROPERTY DETAILS FOR

The Hollows Victoria Road, , Douglas

e: hello@blackgracecowley.com | w. blackgracecowley.com | t: +44 (0) 1624 645 555

a: 51 Victoria Street, DOUGLAS, Isle of Man, IM1 2LD



PROPERTY DETAILS FOR

The Hollows Victoria Road, , Douglas

FLOOR PLAN