



BREAGLE VIEW

St Mary's Road, Port Erin



BREAGLE VIEW

- Breagle View presents a unique opportunity to purchase a superb dwelling
- Enjoys an elevated position with spectacular views over Port Erin & the South
- The beach and local amenities are a short walk away
- Large driveway with parking for seven cars and garaging for a further four
- South facing gardens enjoy panoramic views toward Bradda and the setting sun
- Breagle View offers five spacious bedrooms, three living rooms and an impressive kitchen/dining area
- Planning approval for a further sun lounge extension and additional attic windows to maximise the views
- Oil fired central heating





Breagle View is an immaculately presented modern family home set across three floors, with an underground double garage and expansive attic. Consisting of five spacious bedrooms, three living rooms and an impressive kitchen/dining area. A viewing is strongly recommended to fully appreciate the rare opportunity to acquire the property. Planning approval exists for a further sun lounge extension and additional attic windows to maximise the views.



























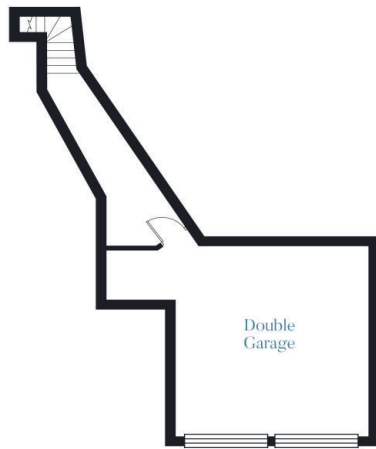




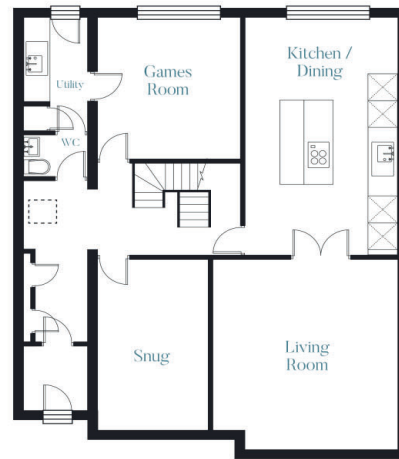




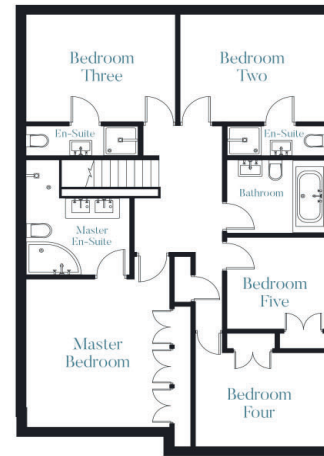
LOWER
GROUND FLOOR



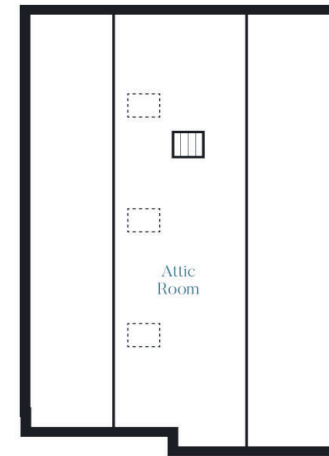
GROUND
FLOOR



FIRST
FLOOR



SECOND
FLOOR





VIEWING

Viewing is strictly by appointment only through the Agent.

Tel: 01624 645 555

Email: hello@blackgracecowley.com