

move.uk.net

Property Sales & Lettings



Move
1 The Clarence
Clarence Parade
Cheltenham
Gloucestershire
GL50 3NY

Office: +44 (0) 1242 257333



**Long Mynd Avenue Cheltenham,
GL51 3QN**

Offers Over £400,000



Three Bedroom Detached Bungalow

Hatherley Location

Off Road Parking and Garage

Open Plan Living Kitchen

Refurbished Throughout

No Chain

Long Mynd Avenue Cheltenham, GL51 3QN

Offers Over £400,000

Proudly Presented To You By Move Estate Agents; A detached, three bedroom bungalow with accommodation over two floors. Having undergone a programme of refurbishment throughout this property offers an ideal family home or an opportunity for those downsizing.

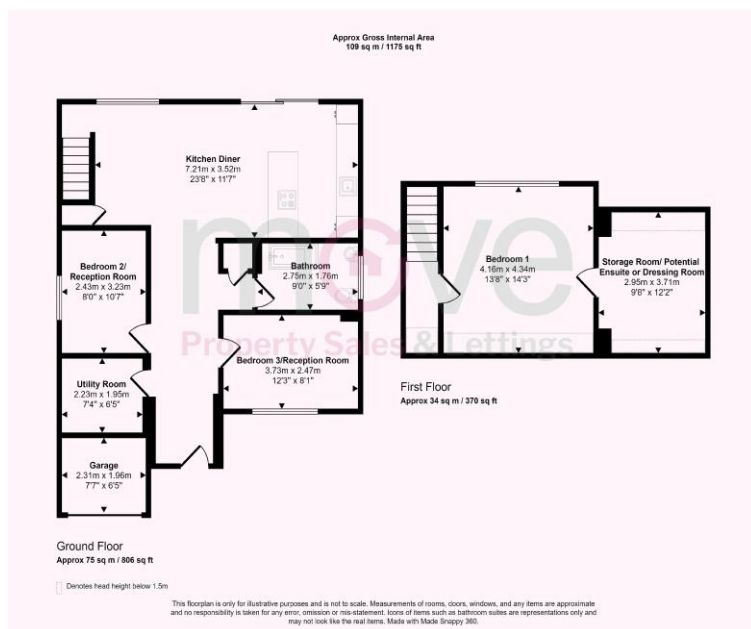
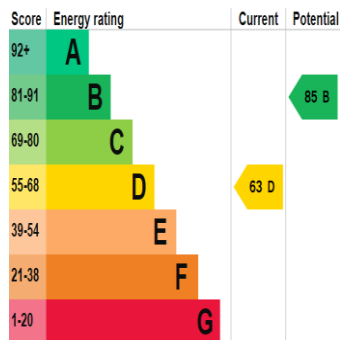
Entering the property via a spacious entrance hall which has been fully tiled. Leading off from the entrance are two double bedrooms, access to the open plan living and a utility room. The utility room has built in storage cupboards and space for a washer dryer. The impressive living space spans the width of the property and has patio doors leading on to the garden. The kitchen has a range of wall and base units as well as integrated fridge freezer and dishwasher. The built in breakfast bar also has a hob built in and decorative lighting to make for a bright social space.

Completing the ground floor is the family bathroom which has a bath with shower over, vanity unit with mounted wash hand basin and WC as well as being fully tiled.

Stairs from the living area lead to the impressive master bedroom which has views over the rear garden. There is a further room which is ready to be converted to either an ensuite or dressing room.

Externally there is plenty of off road parking, a garage and rear garden.

Viewing comes highly recommended to appreciate this immaculate home!



MONEY LAUNDERING REGULATIONS 2003

intending purchasers will be asked to produce identification and proof of financial status when an offer is received. We would ask for your co-operation in order that there will be no delay in agreeing the sale.