

move.uk.net

Property Sales & Lettings



Move
1 The Clarence
Clarence Parade
Cheltenham
Gloucestershire
GL50 3NY

Office: +44 (0) 1242 257333



Clarence Parade Cheltenham, GL50 3NY

£230,000

Two Double Bedroom Apartment

Luxury Designer Fully Fitted Kitchen

Gymnasium On Site

Located In Cheltenham Town Centre

Open Plan Living

No Onward Chain

Proudly presented to you by Move Estate Agents; a stunning two bedroom apartment located on the first floor in the luxury 'Clarence' development. The Clarence is one of the most imposing and unique Grade II listed buildings in Cheltenham. Known as 'The Newspaper Building' it has been home to The Echo for almost a century.

Located with the heart of the town centre which offers a vast array of amenities, restaurants, bars and beautiful parks for an afternoon stroll.

Upon entering via the front door, you will be impressed by the generous open plan living kitchen with feature floor to ceiling windows. The kitchen is fitted with plenty of wall and base units, integrated appliances include fridge, freezer, washing machine, oven with electric hob and extractor over. The rest of the living space offers plenty of room for both living and dining space.

The sizeable master bedroom is located towards the far side of the hall along with the second bedroom which is also a double. Completing this contemporary apartment is the bathroom; comprising of bath with shower over, WC, pedestal sink and heated towel rail.

Further features that this superb development benefits from;

-It's own Gymnasium on site with a personal trainer available upon request

-An elevator Serving all of the floors for those residents not wishing to use the stairs

-Luxury designer contemporary fitted kitchen complete with appliances

-Equipped for digital DVB television, SKY and a feature private entry video system

Further features that this superb development benefits from;

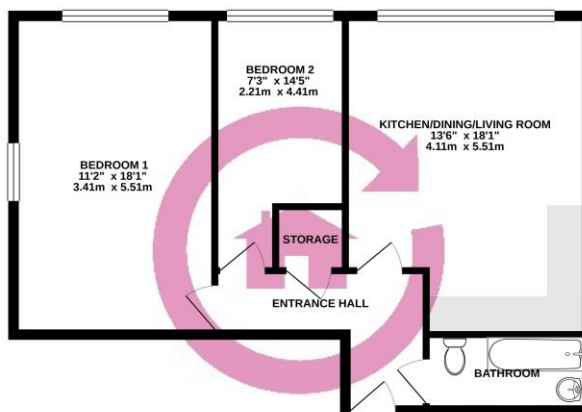
-It's own Gymnasium on site with a personal trainer available upon request

-An elevator Serving all of the floors for those residents not wishing to use the stairs

-Luxury designer contemporary fitted kitchen complete with appliances

-Equipped for digital DVB television, SKY and a feature private entry video system

GROUND FLOOR
635 sq.ft. (59.0 sq.m.) approx.



TOTAL FLOOR AREA: 635 sq.ft. (59.0 sq.m.) approx.
Whilst every effort has been made to ensure the accuracy of the figures, it is recommended that you verify the measurements of areas, volumes, floors and any other facts are approximate and not responsibility to take for any error, omission or inaccuracy. This plan is for illustrative purposes only and should be used as a guide only for prospective purchasers. The services, systems and appliances shown have not been tested and no guarantee will be made regarding their operation.