

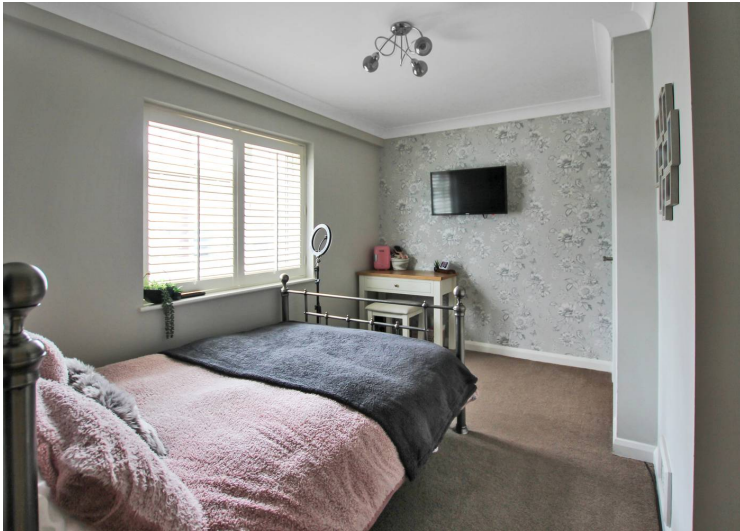


## 5 Marshlands, Dymchurch

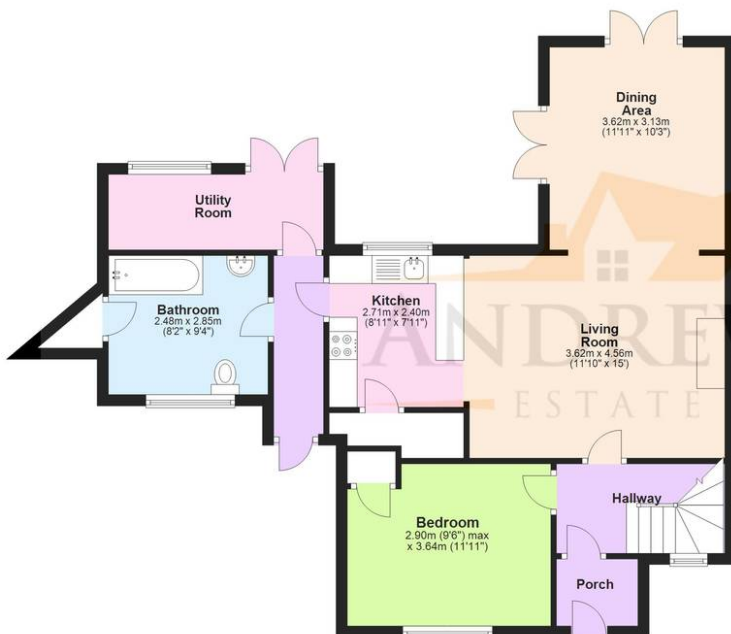
£375,000 Freehold

Four/Five Bedroom • Open Plan Living Space • Modern Bathroom • Shower Room • Landscaped Garden • Central Location • Log Burner • Walking Distance to the Beach





**Ground Floor**  
Approx. 72.0 sq. metres (775.2 sq. feet)



**First Floor**  
Approx. 57.3 sq. metres (616.8 sq. feet)



Total area: approx. 129.3 sq. metres (1392.0 sq. feet)

Plans are for layout purposes only and are not drawn to scale, with any doors, windows and other internal features merely intended as a guide.  
Plan produced using PlanUp.