



Pippin Close, New Romney

New Romney

£525,000

# Pippin Close

New Romney, New Romney

Charming 5-year-old townhouse in New Romney with modern kitchen/family room, landscaped garden, 2 en-suites, garage, and NHBC guarantee. Peaceful cul-de-sac location near High Street and local amenities. Ideal family home - book a viewing now!

Council Tax band: D

Tenure: Freehold

- Luxury Home
- Four Bedroom
- Kitchen Family Room
- Large Lounge
- Open Country View
- Landscaped Rear Garden
- Dining Room / Study
- Cul de Sac Location





**Entrance Hall**

7' 6" x 16' 10" (2.28m x 5.14m)

**Kitchen/Family Room**

17' 4" x 17' 7" (5.28m x 5.37m)

**Dining Room/Office**

12' 2" x 12' 4" (3.71m x 3.75m)

**Wc**

9' 7" x 4' 5" (2.91m x 1.35m)

**Landing**

**Living Room**

17' 4" x 17' 5" (5.29m x 5.31m)

**Bedroom**

17' 5" x 9' 9" (5.31m x 2.98m)

**En-Suite Shower Room**

7' 2" x 5' 4" (2.19m x 1.62m)

**Landing**

**Bedroom**

17' 5" x 14' 11" (5.30m x 4.56m)

**En-Suite Shower Room**

4' 9" x 9' 1" (1.44m x 2.78m)

**Family Bathroom**

9' 8" x 9' 1" (2.95m x 2.78m)

**Bedroom**

9' 1" x 12' 6" (2.77m x 3.82m)

**Bedroom**

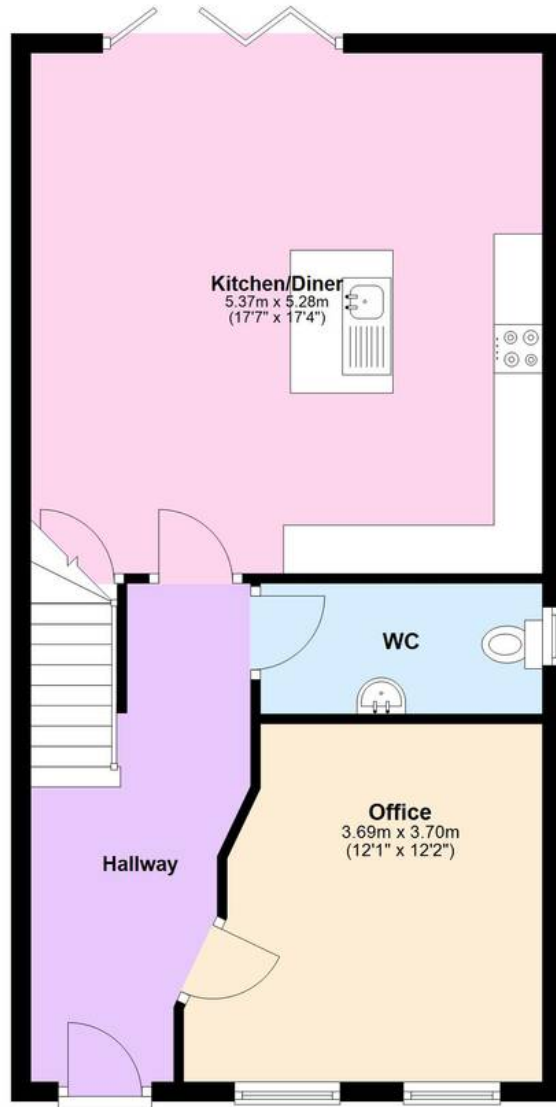
7' 10" x 9' 10" (2.40m x 3.00m)





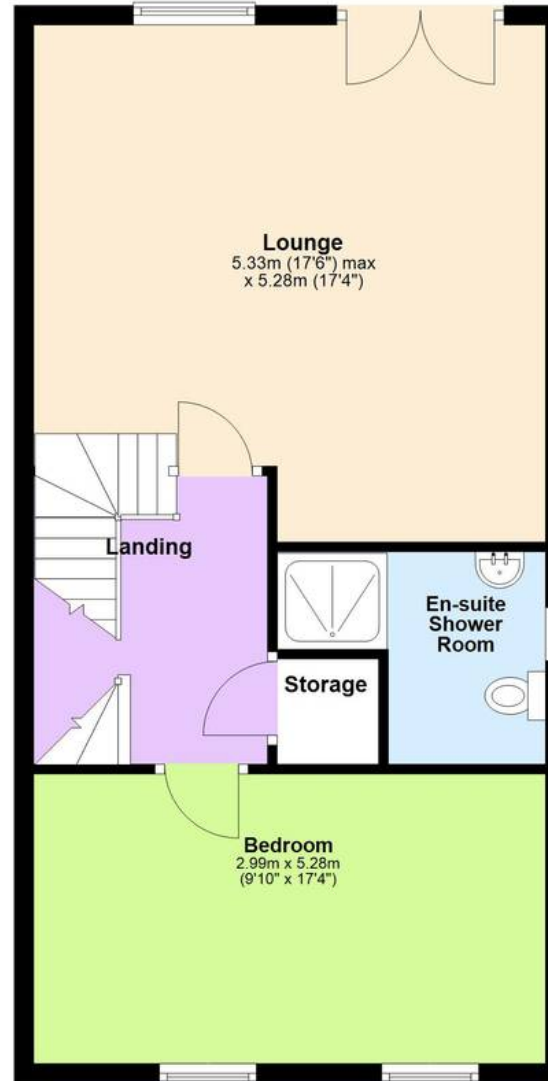
## Ground Floor

Approx. 56.0 sq. metres (602.4 sq. feet)



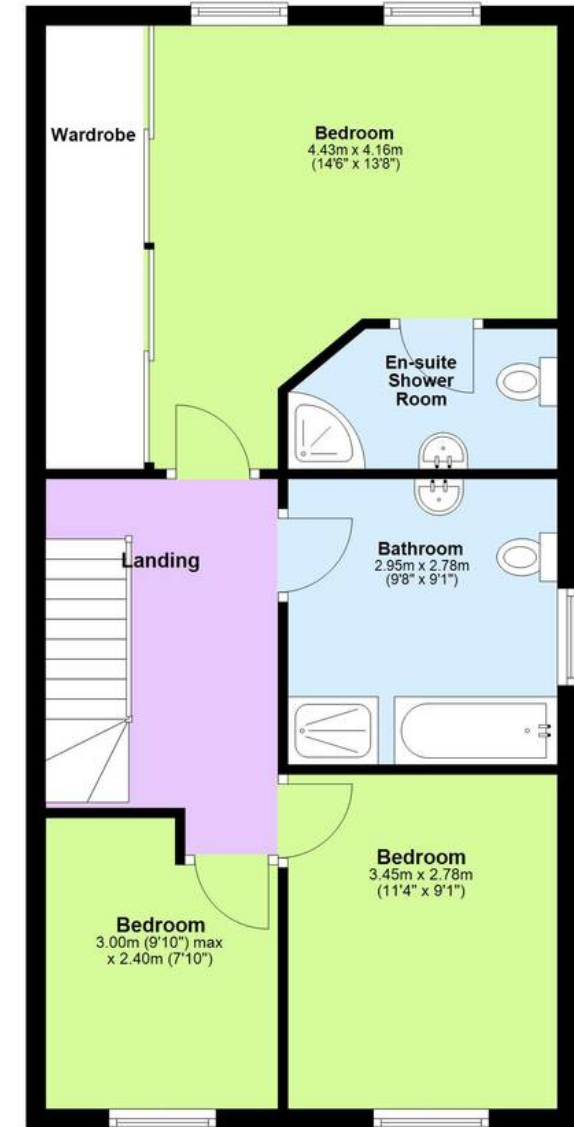
## First Floor

Approx. 56.5 sq. metres (608.1 sq. feet)



## Second Floor

Approx. 58.9 sq. metres (634.5 sq. feet)



Total area: approx. 171.4 sq. metres (1845.1 sq. feet)

Plans are for layout purposes only and not drawn to scale, with any doors, windows and other internal features merely intended as a guide.  
Plan produced using PlanUp.

These particulars are intended to give a fair and reliable description of the property but no responsibility for any inaccuracy or error can be accepted and do not constitute an offer or contract. We have not tested any services or appliances (including central heating if fitted) referred to in these particulars and purchasers are advised to satisfy themselves as to the working order and condition, if a property is unoccupied at any time there may be reconnection charges for any switched off/disconnected or drained services or appliances. All measurements are approximate.



**Andrew & Co Estate Agents - New Romney**

01797 362898

[newromney@andrewandco.co.uk](mailto:newromney@andrewandco.co.uk)

