



Williamson Road, Lydd On Sea

Romney Marsh

£375,000

1 Williamson Road

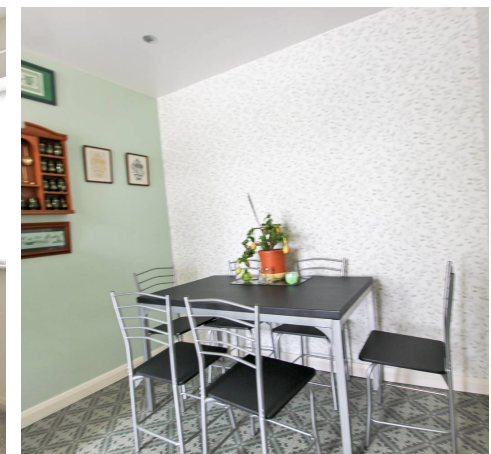
Lydd On Sea, Romney Marsh

Charming 3-bed detached bungalow with historic Pluto house origins. Grand hallway, spacious living room, kitchen/diner, 3 double bedrooms, 2 bathrooms. Garage, low-maintenance garden, outdoor patio. Ideal blend of comfort and convenience in peaceful setting.

Council Tax band: C

Tenure: Freehold

- Three Bedroom Detached Bungalow
- Former Pluto House
- Two Bathrooms
- Large Living Room
- Low Maintenance Garden
- Close to Local Shops
- Kitchen/Diner





Entrance Porch

Hallway

Living Room

17' 10" x 13' 1" (5.43m x 3.98m)

Kitchen/Diner

23' 9" x 8' 4" (7.24m x 2.54m)

Bedroom

11' 11" x 9' 5" (3.64m x 2.88m)

Bedroom

8' 10" x 10' 0" (2.69m x 3.04m)

Bedroom

8' 3" x 13' 8" (2.52m x 4.16m)

Bathroom

8' 6" x 7' 1" (2.60m x 2.16m)

Shower Room

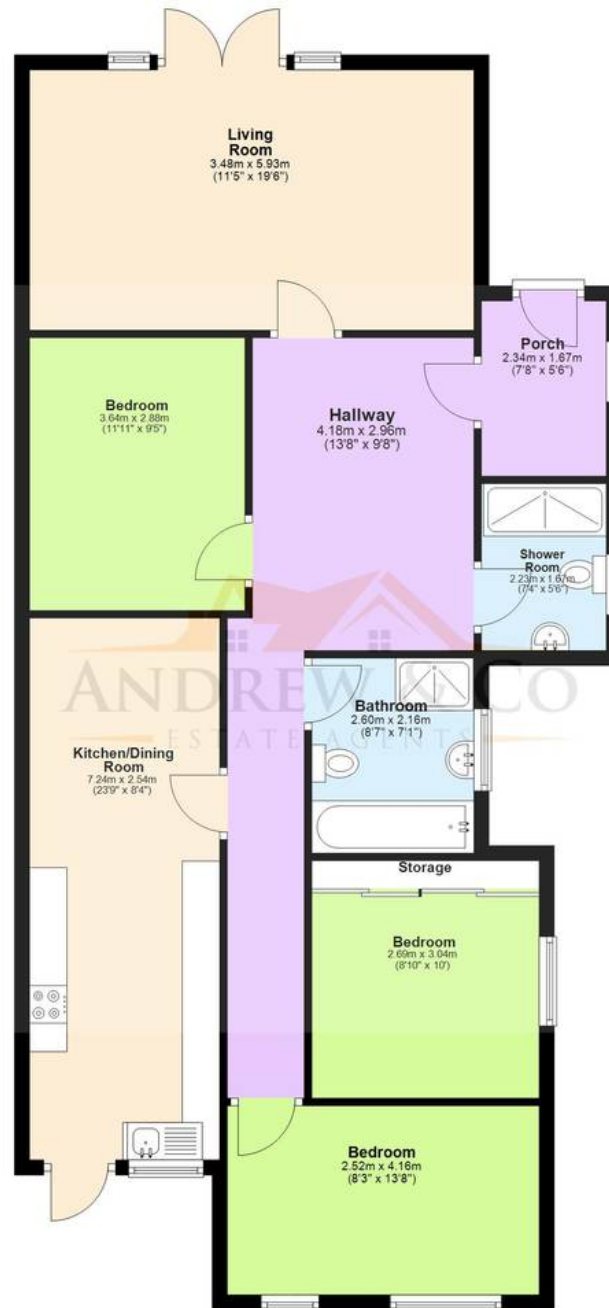
7' 4" x 5' 4" (2.23m x 1.63m)





Ground Floor

Approx. 101.4 sq. metres (1091.7 sq. feet)



Total area: approx. 101.4 sq. metres (1091.7 sq. feet)

Plans are for layout purposes only and not drawn to scale, with any doors, windows and other internal features merely intended as a guide.
Plan produced using PlanUp.

These particulars are intended to give a fair and reliable description of the property but no responsibility for any inaccuracy or error can be accepted and do not constitute an offer or contract. We have not tested any services or appliances (including central heating if fitted) referred to in these particulars and purchasers are advised to satisfy themselves as to the working order and condition, if a property is unoccupied at any time there may be reconnection charges for any switched off/disconnected or drained services or appliances. All measurements are approximate.



Andrew & Co Estate Agents - New Romney

01797 362898

newromney@andrewandco.co.uk

