

THE LOCK HOUSE, 35 OVAL ROAD, NW1

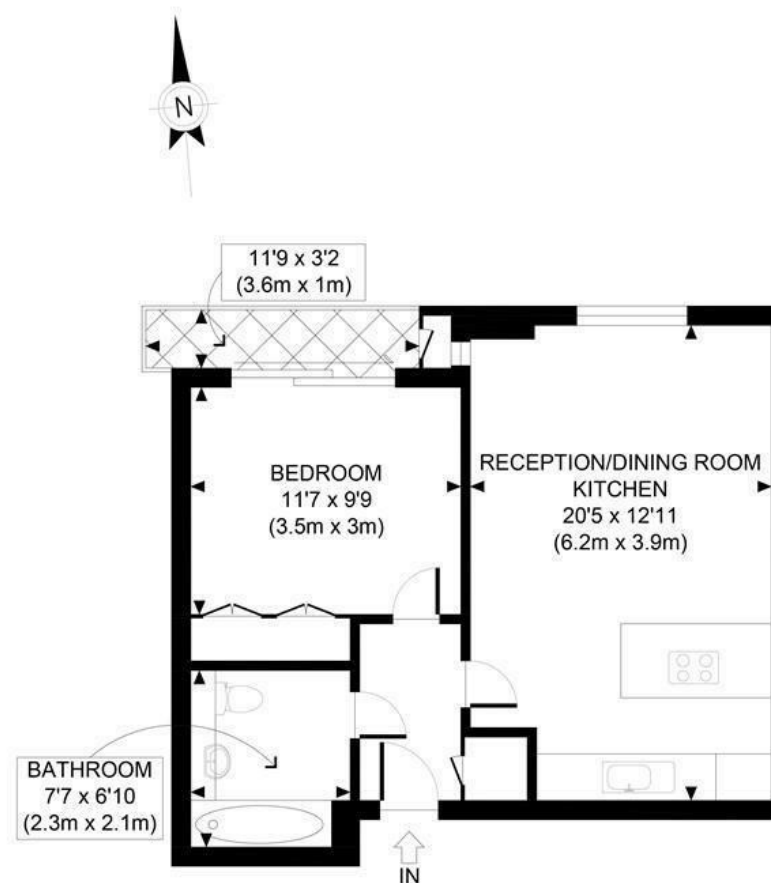
Red.



£515,000

A spacious one bed apartment, with a private balcony is available in a well-sought after development in Camden. This property comprises of a large open plan kitchen/reception, large bathroom, bedroom and is flooded with natural daylight. Other benefits include views over the canal and a secure underground car parking space.

Lock House, Oval Road, enjoys a well-presented communal garden and terrace, residents gym, secure cycle parking, 24 hours porter and communal gas central heating system. Well located for Camden Town, Camden Road Overground Stations and many well-connecting bus routes, such as the 274 and C2. Regents Park and Primrose Hill are within 5 minutes walk, there are also many excellent schools, supermarkets, cafés, restaurants, gastropubs, and bars in the local area.



SECOND FLOOR
GROSS INTERNAL
FLOOR AREA 489 SQ FT

APPROX. GROSS INTERNAL FLOOR AREA 489 SQ FT / 45 SQM

Ref:

Copyright **photo**plan

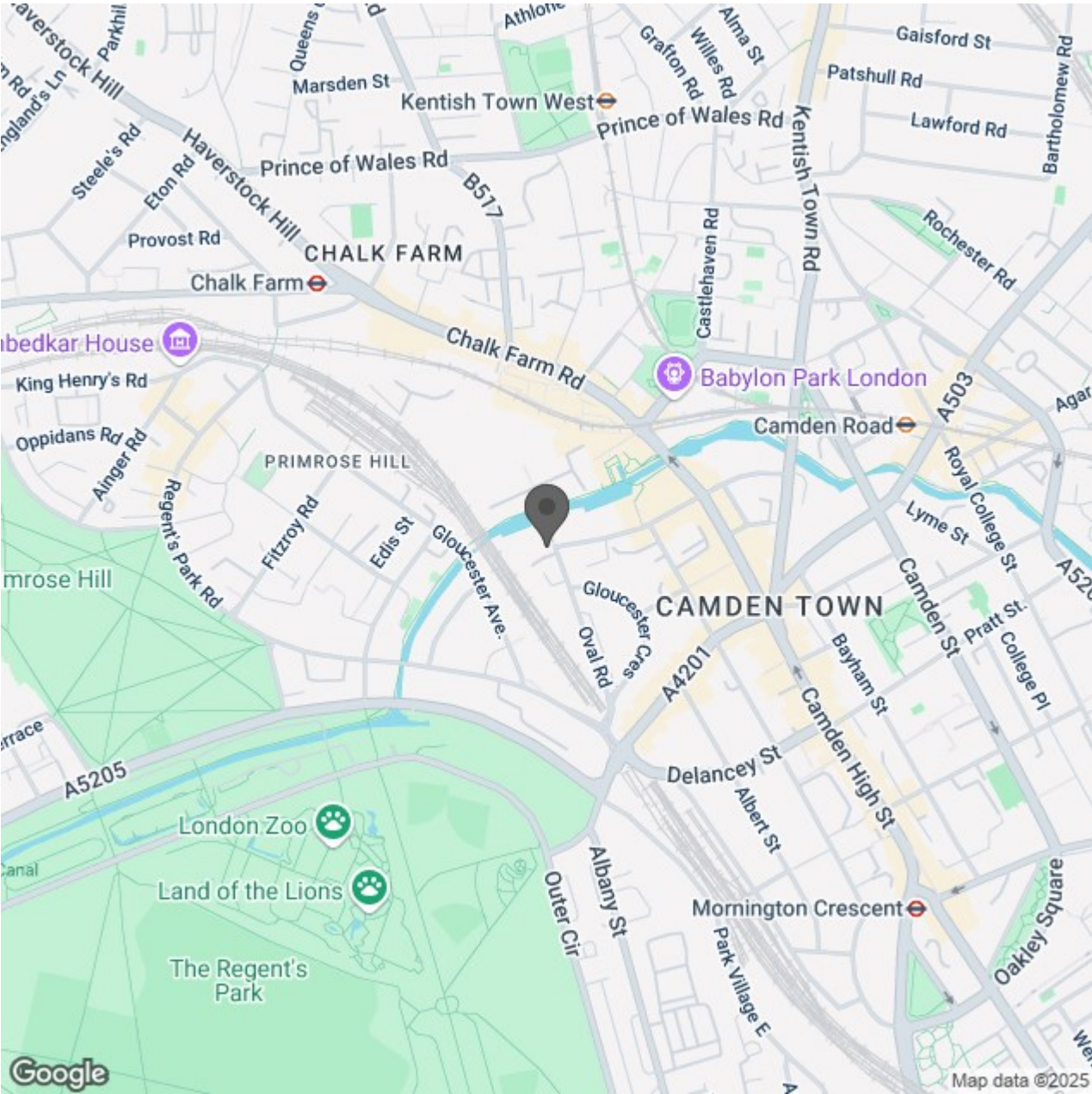
Disclaimer: Floor plan measurements are approximate and are for illustrative purposes only. While we do not doubt the floor plan accuracy and completeness, you or your advisors should conduct a careful, independent investigation of the property in respect of monetary valuation

- One Bedroom Apartment
- Large Bathroom



Energy Efficiency Rating		Current	Potential
Very energy efficient - lower running costs			
(92 plus) A			
(81-91) B			
(69-80) C			
(55-68) D			
(39-54) E			
(21-38) F			
(1-20) G			
Not energy efficient - higher running costs			
England & Wales		EU Directive 2002/91/EC	

Environmental Impact (CO ₂) Rating		Current	Potential
Very environmentally friendly - lower CO ₂ emissions			
(92 plus) A			
(81-91) B			
(69-80) C			
(55-68) D			
(39-54) E			
(21-38) F			
(1-20) G			
Not environmentally friendly - higher CO ₂ emissions			
England & Wales		EU Directive 2002/91/EC	



Red.