



£2,680 PER MONTH

Available Now. An exceptional Manhattan-style studio is available to rent in this highly sought after development at 23 Gauging Square, minutes from St Katherine Docks.

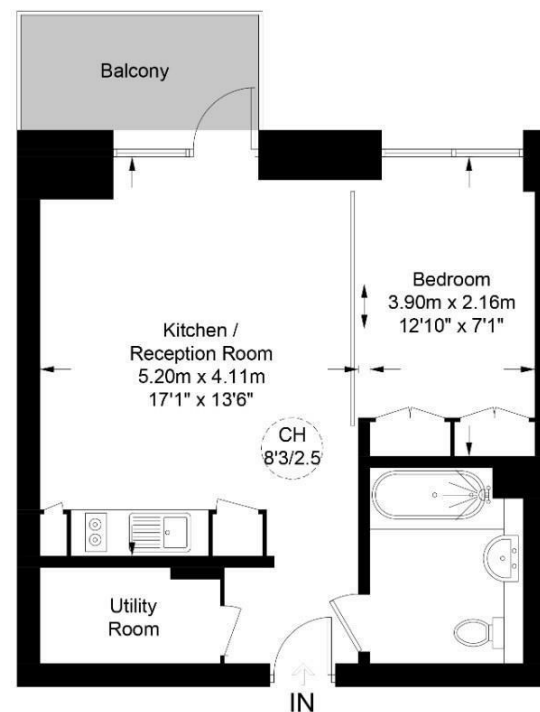
This property benefits from high standard finishing, an open-plan kitchen-living area with a private balcony offering Canary Wharf views, built-in appliances, a large built-in wardrobe, large standard bathroom and exceptional choice of the finest level resident's facilities such as a state-of-the-art gymnasium, heated swimming pool, squash court, virtual golf, treatment room, sauna, steam room, private screening room-cinema and residents lounge complimented by the 24-hour concierge.

23 Gauging Square offers beautifully landscaped public spaces, shops, bars and restaurants and has excellent transport links to Chelsea, Victoria and Canary Wharf.



Cashmere Wharf, E1W

Approximate Gross Internal Area = 444 sq ft / 41.3 sq m



Seventeenth Floor

This plan is for layout guidance only. Not drawn to scale unless stated. Windows and door openings are approximate. Whilst every care is taken in the preparation of this plan, please check all dimensions, shapes and compass bearings before making any decisions reliant upon them. (ID862736)



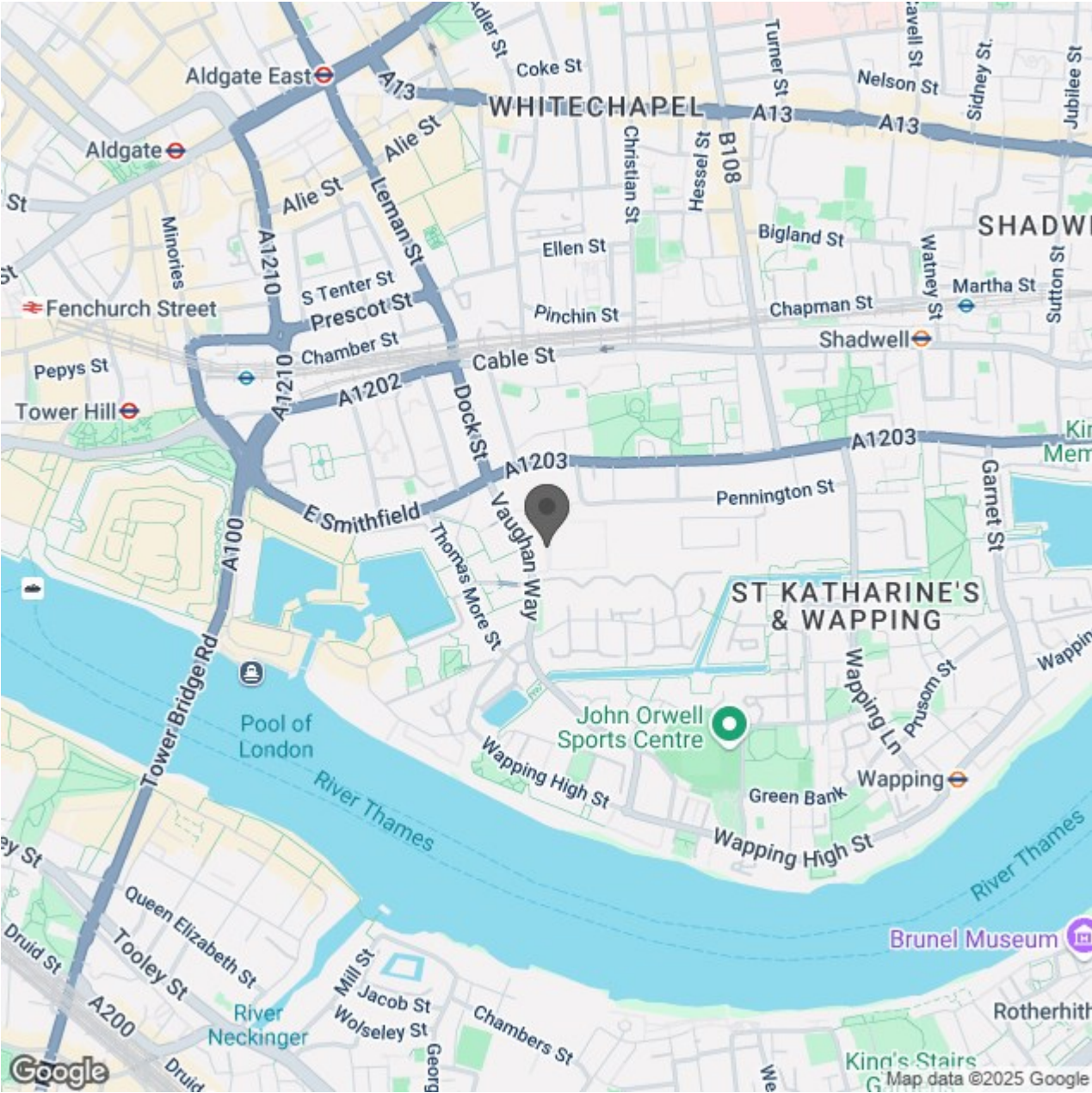
**Certified
Property
Measurer**

- Manhattan Style Studio
- Spacious Living Area
- Private Balcony
- CCTV Throughout The Development
- 24 hrs Concierge
- Modern Kitchen
- Modern Bathroom
- Stunning Views
- Abundance of Residents Amenities
- Excellent Location



Energy Efficiency Rating		Current	Potential
Very energy efficient - lower running costs			
(92 plus) A		83	83
(81-91) B			
(69-80) C			
(55-68) D			
(39-54) E			
(21-38) F			
(1-20) G			
Not energy efficient - higher running costs			
England & Wales		EU Directive 2002/91/EC	

Environmental Impact (CO ₂) Rating		Current	Potential
Very environmentally friendly - lower CO ₂ emissions			
(92 plus) A			
(81-91) B			
(69-80) C			
(55-68) D			
(39-54) E			
(21-38) F			
(1-20) G			
Not environmentally friendly - higher CO ₂ emissions			
England & Wales		EU Directive 2002/91/EC	



Red.