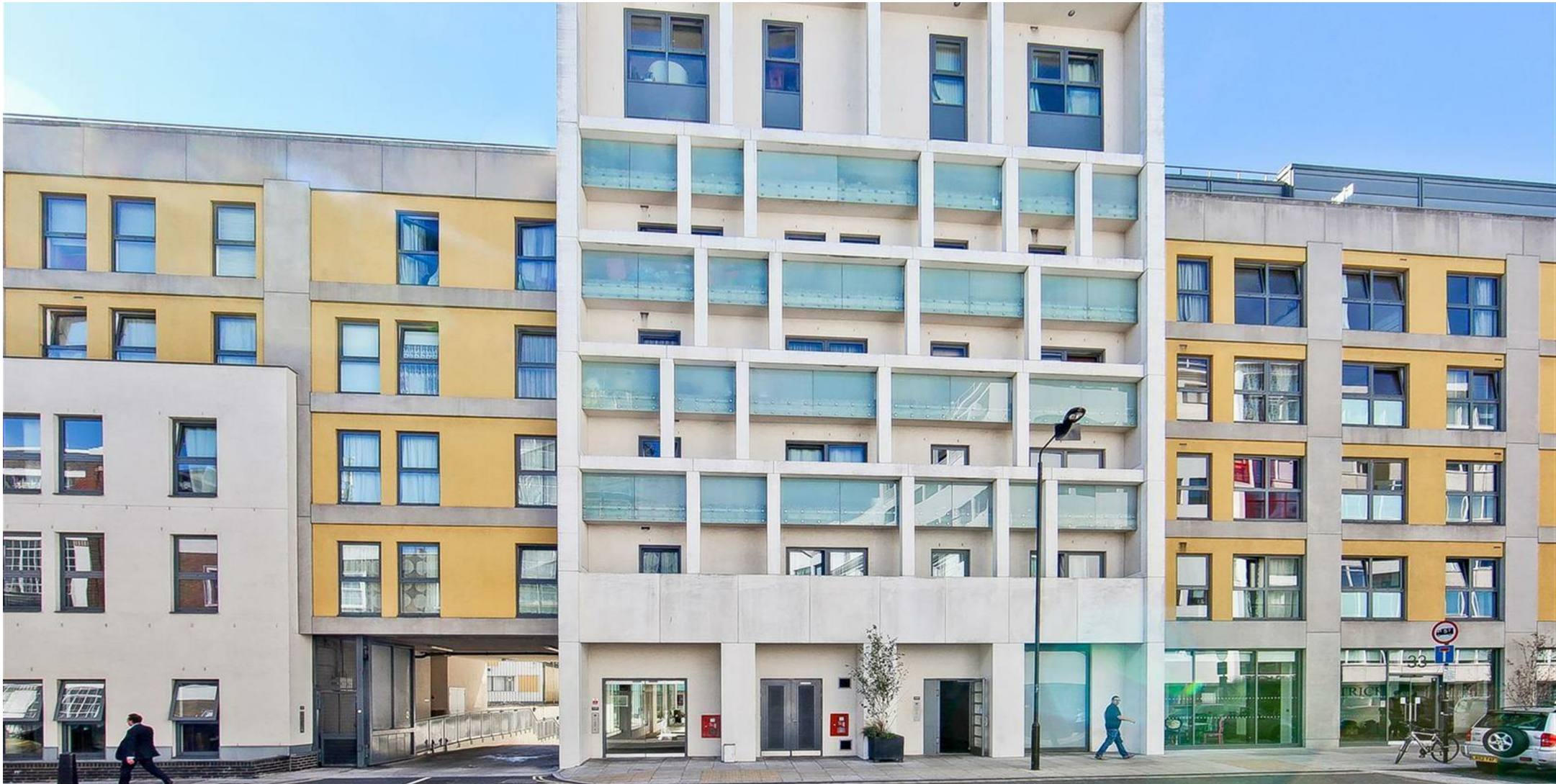


35 OVAL ROAD, CAMDEN

Red.



£2,800 PER MONTH

A beautifully presented two-bedroom, two-bathroom apartment set within the popular Lock House development on Oval Road, just a short walk from Camden Town Underground station.

Spanning nearly 850 sq. ft., this spacious home offers a bright open-plan living and dining area, a stylish upgraded kitchen, and hardwood flooring throughout. Both bedrooms are generous doubles, with the principal bedroom benefiting from a modern en-suite. Excellent storage is provided throughout the property.

Residents of Lock House enjoy access to a well-maintained communal garden and terrace, a residents' gym, secure cycle storage, and a 24-hour concierge service.

Situated on a quiet residential road, yet moments from the vibrant amenities of Camden, this apartment offers the perfect blend of comfort, convenience and contemporary living.

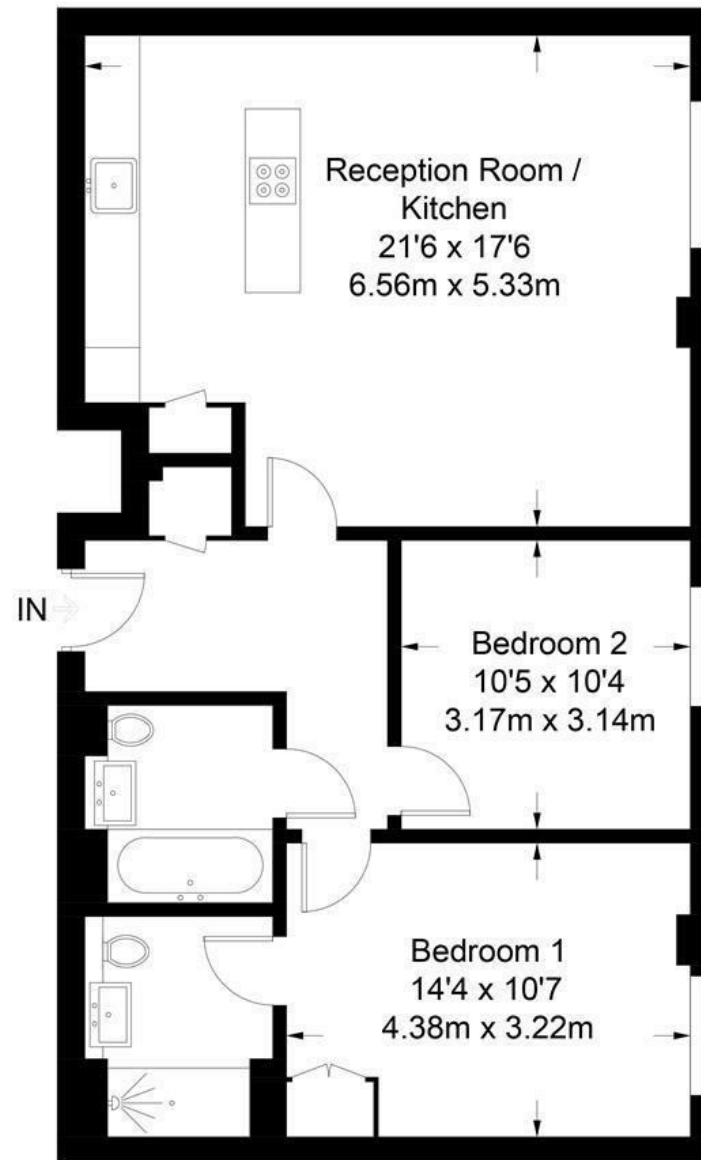


Lock House

Approximate Gross Internal Area = 843 sq ft / 78.3 sq m



Red.



Second Floor

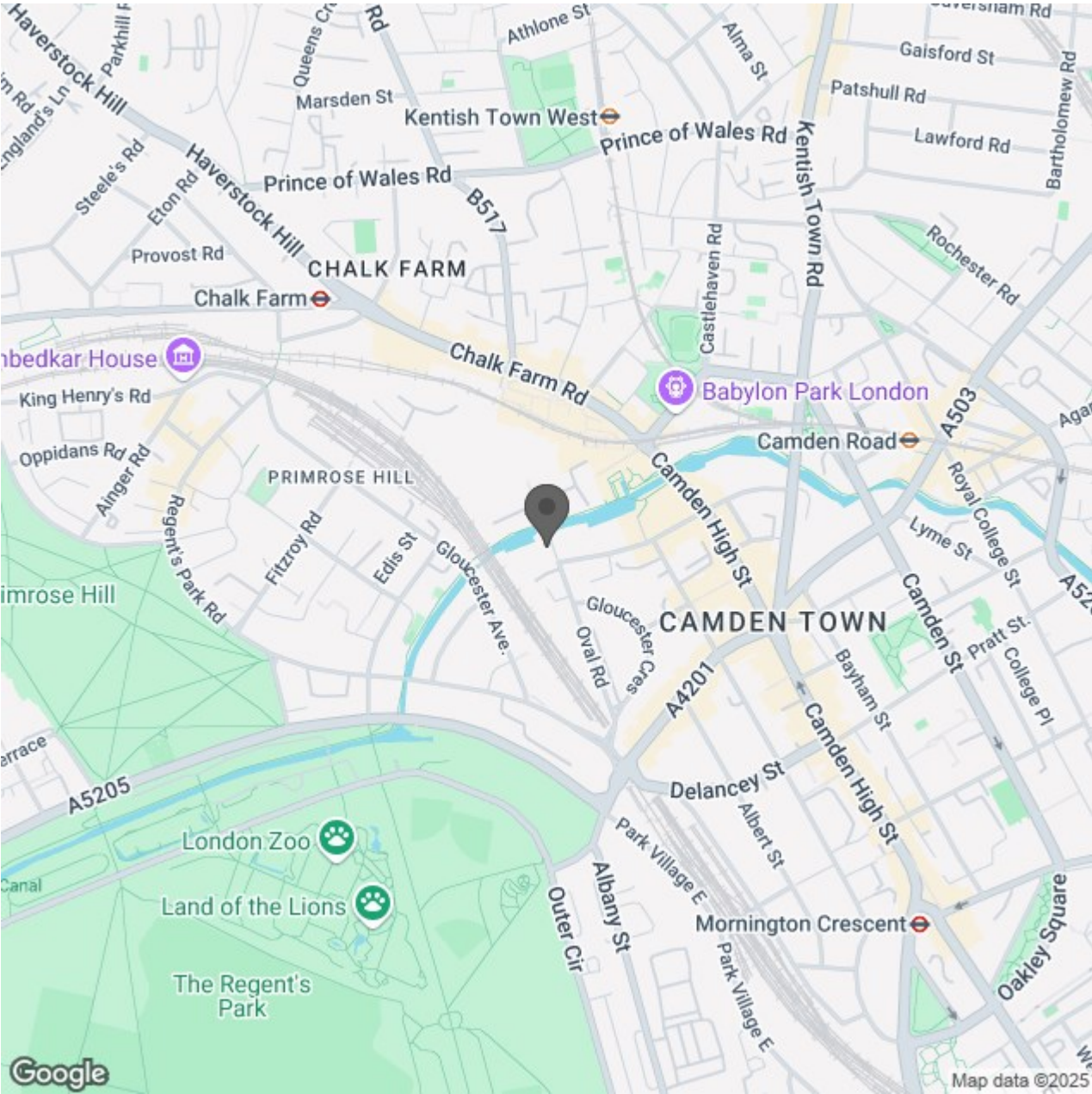
Illustration for identification purposes only,
measurements are approximate, not to scale. (ID487411)

- Two Double Bedrooms
- Open Plan Living
- 24-Hour Concierge
- Residents Gym & Cycle Storage
- Close to Local Amenities
- Two Bathrooms
- Integrated Kitchen
- Communal Gardens
- Heating & Hot Water Bills Included



Energy Efficiency Rating		Current	Potential
Very energy efficient - lower running costs			
(92 plus) A			
(81-91) B			
(69-80) C			
(55-68) D			
(39-54) E			
(21-38) F			
(1-20) G			
Not energy efficient - higher running costs			
England & Wales		EU Directive 2002/91/EC	

Environmental Impact (CO ₂) Rating		Current	Potential
Very environmentally friendly - lower CO ₂ emissions			
(92 plus) A			
(81-91) B			
(69-80) C			
(55-68) D			
(39-54) E			
(21-38) F			
(1-20) G			
Not environmentally friendly - higher CO ₂ emissions			
England & Wales		EU Directive 2002/91/EC	



Red.