



£2,250

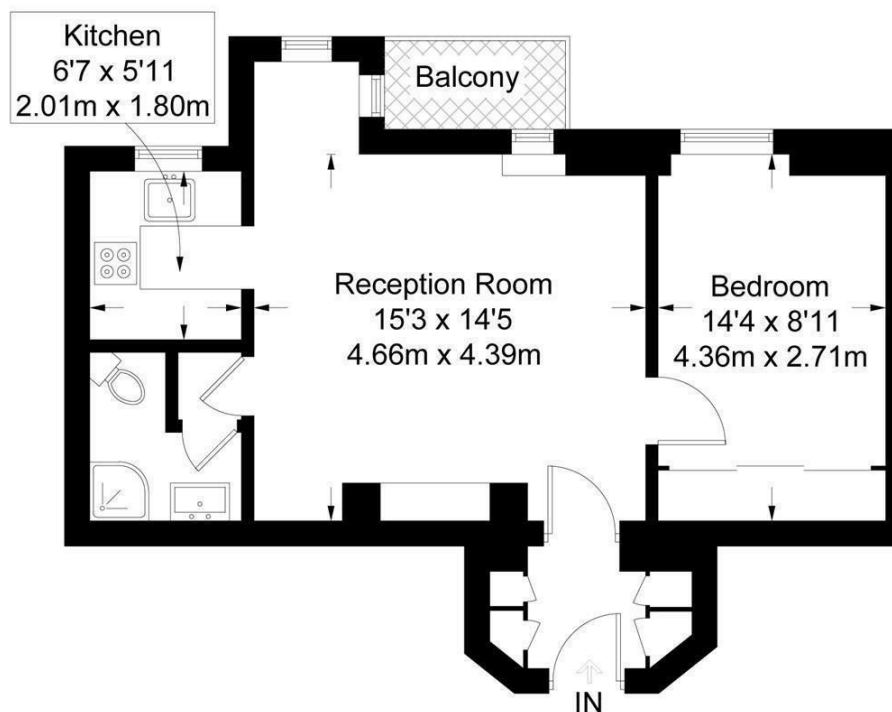
A beautiful and newly re-decorated and re-carpeted one bedroom apartment in a highly sought after mansion block. This spacious property offers a well-proportioned bedroom and living space along with a separate kitchen and bathroom with walk in shower. AVAILABLE NOW.

Bickenhall Mansions is a popular mansion block with 24-hour security and video entry phone. All floors are accessed via private lifts throughout. It is located on a quiet residential road, and yet only moments from Marylebone Road, and a short walk from Baker Street underground and Marylebone Station.



Bickenhall Mansions

Approximate Gross Internal Area = 498 sq ft / 46.3 sq m



First Floor

Illustration for identification purposes only, measurements are approximate, not to scale. (ID237844)

- Mansion block
- High Ceilings
- New Carpets
- Bathroom with walk in shower
- Close to Station
- 24 hour security
- Newly decorated
- Ample storgae
- Large double bedroom with built in wardrobe
- Available Immediately



Energy Efficiency Rating	Environmental Impact (CO ₂) Rating	
	Current	Potential
Very energy efficient - lower running costs		
(92 plus) A		
(81-91) B		
(69-80) C		
(55-68) D		
(39-54) E		
(21-38) F		
(1-20) G		
Not energy efficient - higher running costs		
73	80	
England & Wales	EU Directive 2002/91/EC	

Very environmentally friendly - lower CO ₂ emissions	Current	Potential
(92 plus) A		
(81-91) B		
(69-80) C		
(55-68) D		
(39-54) E		
(21-38) F		
(1-20) G		
Not environmentally friendly - higher CO ₂ emissions		
England & Wales	EU Directive 2002/91/EC	

