

CHARLOTTE KING COURT, 34 GOLDSMITH ROW, LONDON

Red.



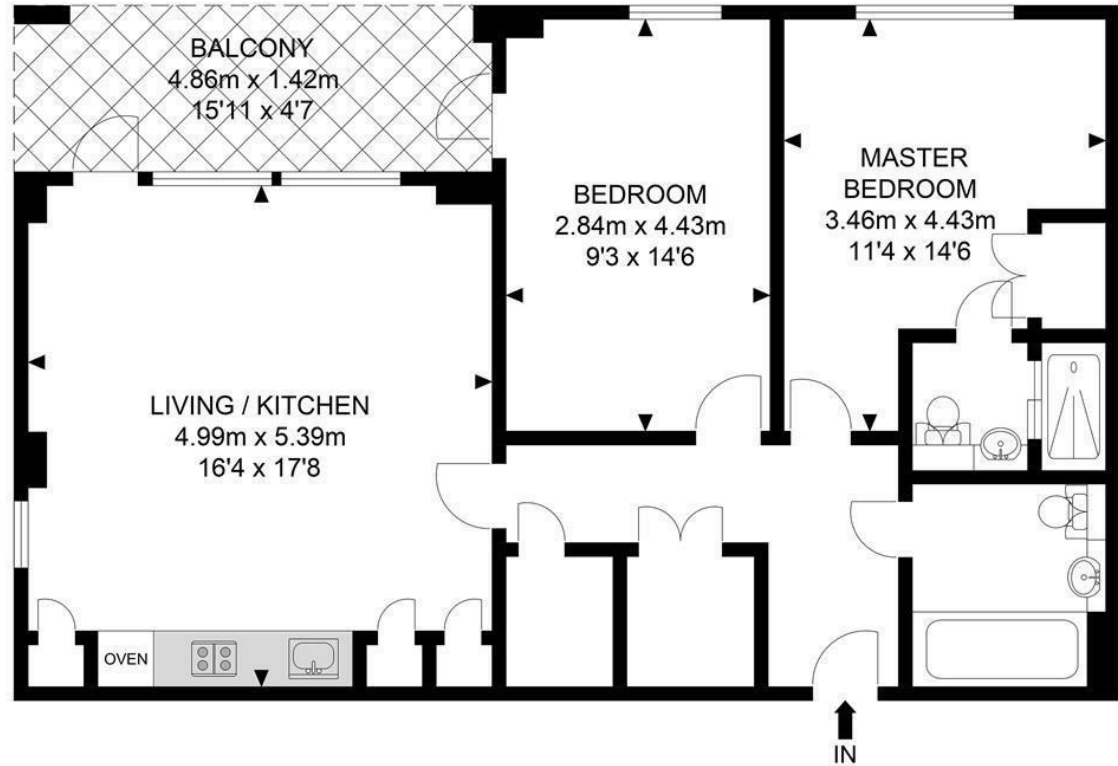
£2,950

A furnished, two double bedroom, two bathroom apartment with plenty of storage and private balcony. The apartment is presented in excellent condition and boasts a lovely aspect over Goldsmith Row and Haggerston Park.

Goldsmith Row is well located for Hoxton and Cambridge Heath Overground Station whilst only a short walk to Bethnal Green (Central Line). Columbia Flower Market and Broadway Market are both within a few minutes walk.

For green space, there is Haggerston Park on the doorstep, with London Fields and Victoria Park, both within walking distance.

Charlotte King Court



Ground Floor

APPROX. GROSS INTERNAL FLOOR AREA 796.74 SQ FT / 74.02 SQM

APPROX. GROSS INTERNAL FLOOR AREA INC. BALCONY AREA 894.91 SQ FT / 83.14 SQM

Whilst every attempt has been made to ensure the accuracy of the floor plan contained here, measurements of doors, windows, rooms and any other items are approximates and no responsibility is taken for any error, omission or mis-statement. This plan is for illustrative purposes only and should be used as such by any prospective purchaser. The service, system and appliances shown have not been tested and no guarantee as to their operability or efficiency can be given.

© SpacePhoto
Photography and Floor Plan



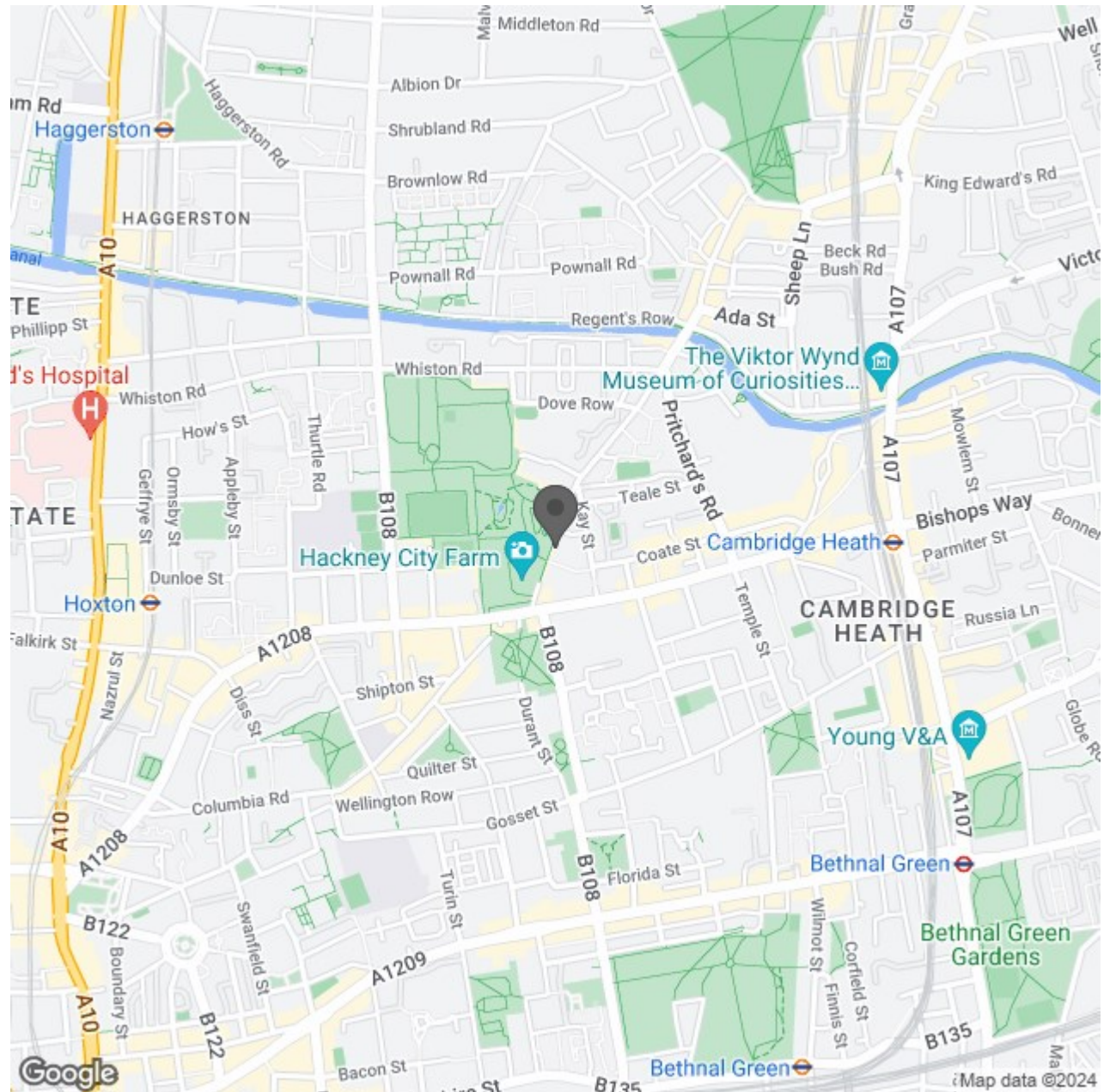
Energy Efficiency Rating

	Current	Potential
Very energy efficient - lower running costs		
(92 plus) A		
(81-91) B		
(69-80) C		
(55-68) D		
(39-54) E		
(21-38) F		
(1-20) G		
Not energy efficient - higher running costs		
England & Wales	EU Directive 2002/91/EC	

Environmental Impact (CO₂) Rating

	Current	Potential
Very environmentally friendly - lower CO ₂ emissions		
(92 plus) A		
(81-91) B		
(69-80) C		
(55-68) D		
(39-54) E		
(21-38) F		
(1-20) G		
Not environmentally friendly - higher CO ₂ emissions		
England & Wales	EU Directive 2002/91/EC	

85 85



Red.