

OSNABURGH STREET, REGENTS PLACE, NW1

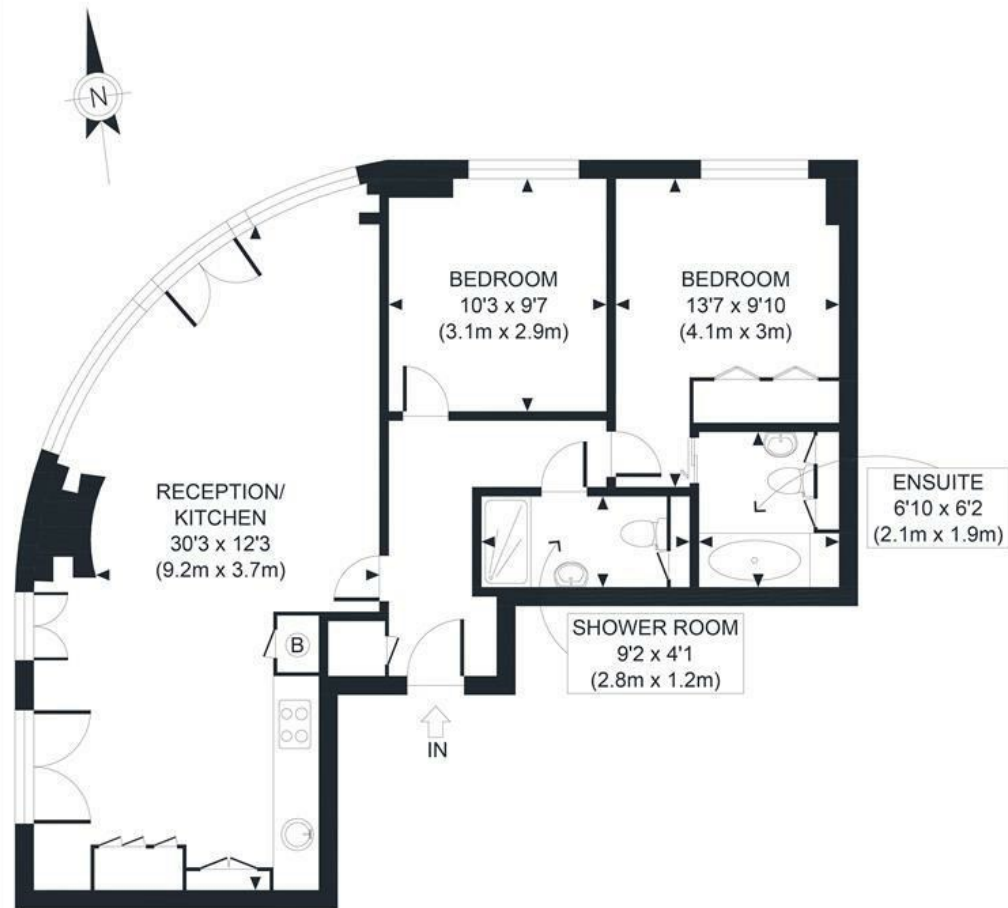
Red.



£3,700 PER MONTH

A modern two bedroom, two bathroom apartment located in the highly regarded One Osnaburgh Street, Regent's Place. This light and bright two double bedroom and two bathroom (one en-suite) apartment also benefits from underfloor heating, air conditioning, a spacious lounge with large windows, and an open plan kitchen with built-in appliances.

This portered building is located close to Regents Park, and minutes from both Great Portland Street and Warren Street Tube Stations.



FIFTH FLOOR
GROSS INTERNAL
FLOOR AREA 765 SQ FT

APPROX. GROSS INTERNAL FLOOR AREA 765 SQ FT / 71 SQM

Ref: Copyright **photo**plan

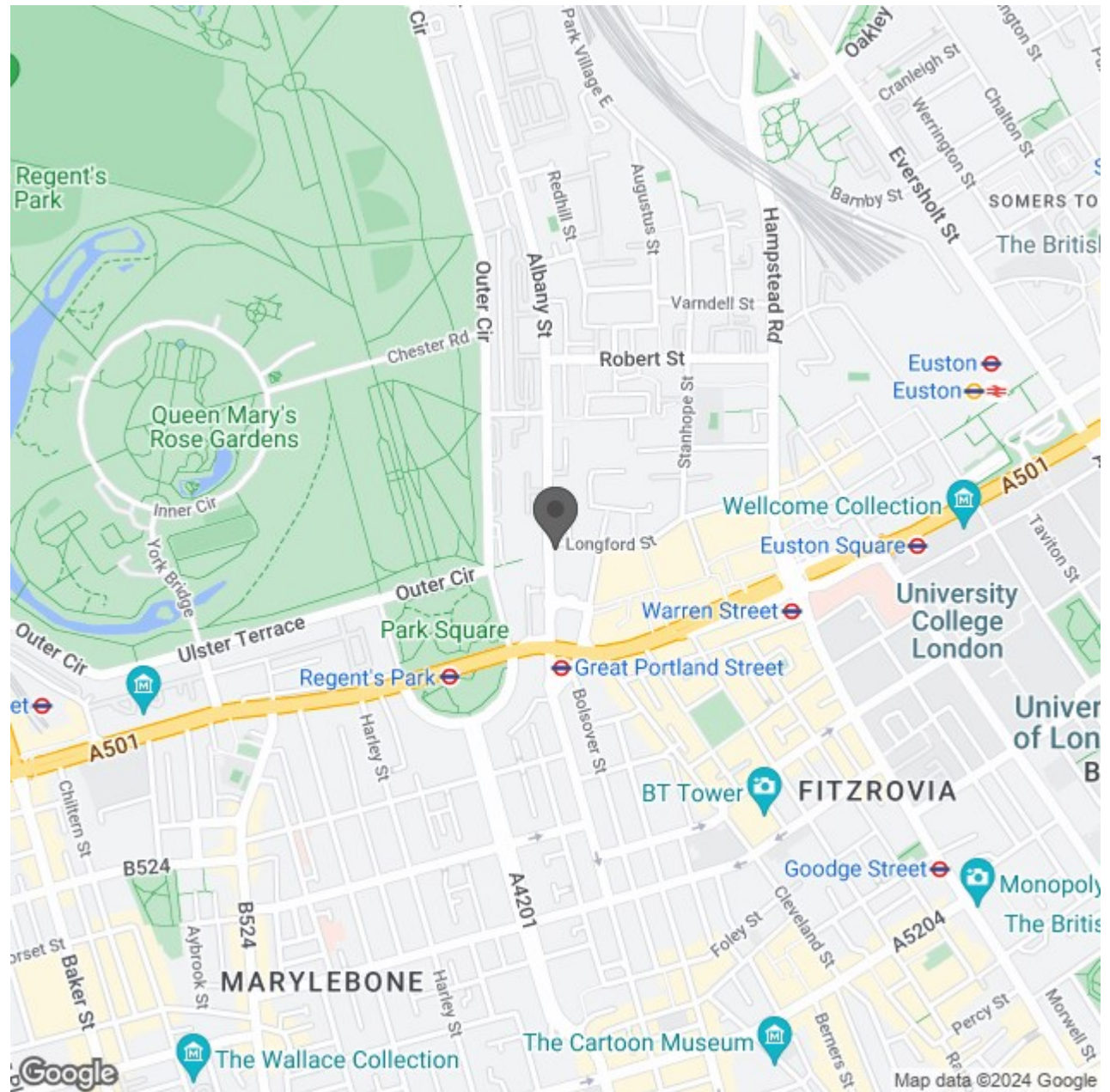
Disclaimer: Floor plan measurements are approximate and are for illustrative purposes only. While we do not doubt the floor plan accuracy and completeness, you or your advisors should conduct a careful, independent investigation of the property in respect of monetary valuation

- Two Double Bedrooms
- Open Plan Living Area
- Underfloor Heating
- Juliette Balcony
- Porter
- Two Bathrooms
- Large Windows
- Comfort Cooling
- Secure Entry Phone System
- Excellent Location



Energy Efficiency Rating		Current	Potential
Very energy efficient - lower running costs			
(92 plus) A		83	83
(81-91) B			
(69-80) C			
(55-68) D			
(39-54) E			
(21-38) F			
(1-20) G			
Not energy efficient - higher running costs			
England & Wales	EU Directive 2002/91/EC		

Environmental Impact (CO ₂) Rating		Current	Potential
Very environmentally friendly - lower CO ₂ emissions			
(92 plus) A		77	78
(81-91) B			
(69-80) C			
(55-68) D			
(39-54) E			
(21-38) F			
(1-20) G			
Not environmentally friendly - higher CO ₂ emissions			
England & Wales	EU Directive 2002/91/EC		



Red.