

79 PALACE GARDENS TERRACE, LONDON

Red.

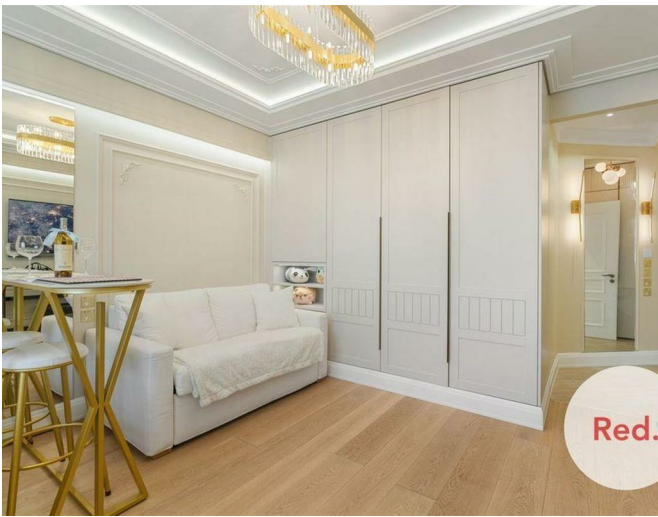


£2,200

This immaculately presented studio apartment set in Broadwalk Court, comes with hot water and heating included. Furnished and interior designed to make exceptional use of the space.

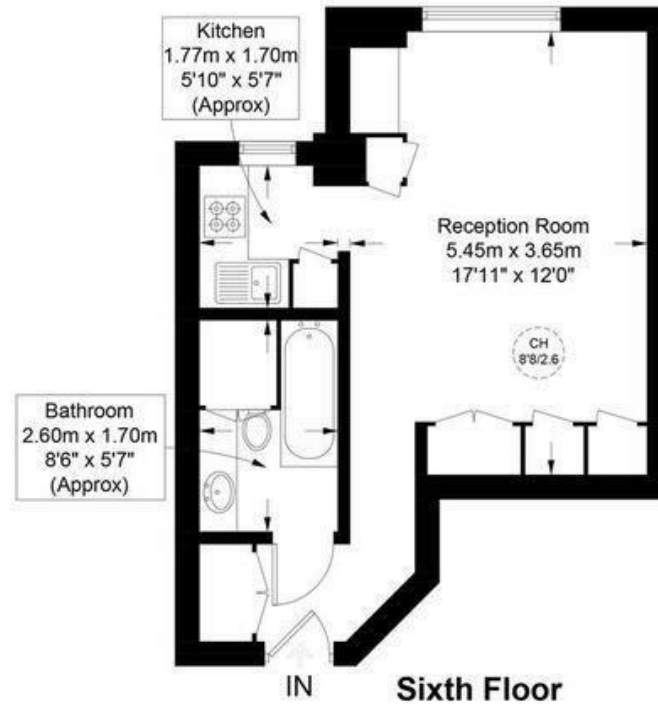
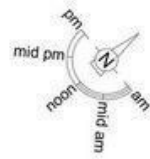
Wooden floors and modern design along with a well equipped kitchen including Bosch refrigerator, Oven with built in microwave and built in drinking water filter direct from the faucet highlight it's qualities. The luxury bathroom offers a bath/shower combination. Within the main living space there is a built in wardrobe, storage under the main bed and an additional sofa bed.

There are a host of amenities including rated restaurants, banks, coffee shops and parks in the vicinity. Transport links nearby are Notting Hill Gate Tube Station is within a 3-minute walking distance, and Queensway tube stations is 7 minutes from the address.



Broadwalk Court, W8

Approximate Gross Internal Area = 345 sq ft / 32.1 sq m

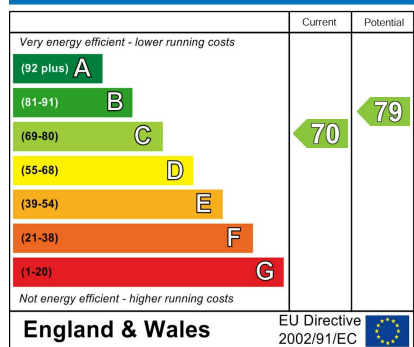


This plan is for layout guidance only and is not drawn to scale unless stated. All dimensions, including windows, doors, and the Total Gross Internal Area (GIA), are approximate. For precise measurements, please consult a qualified architect or surveyor before making any decisions based on this plan.

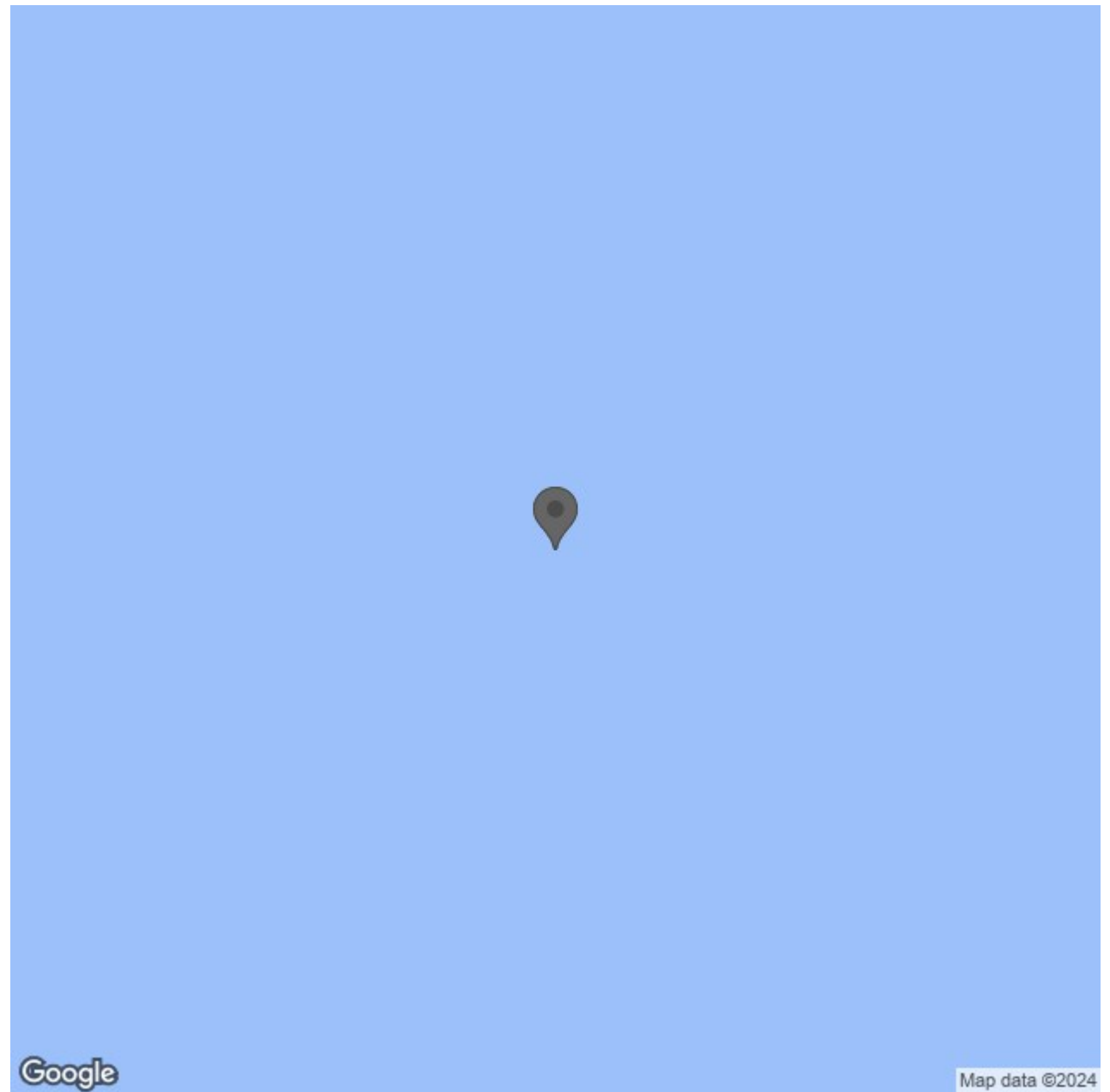
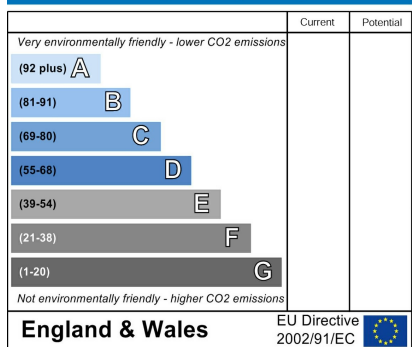




Energy Efficiency Rating



Environmental Impact (CO₂) Rating



Red.