

REGENTS PARK ROAD, PRIMROSE HILL

Red.

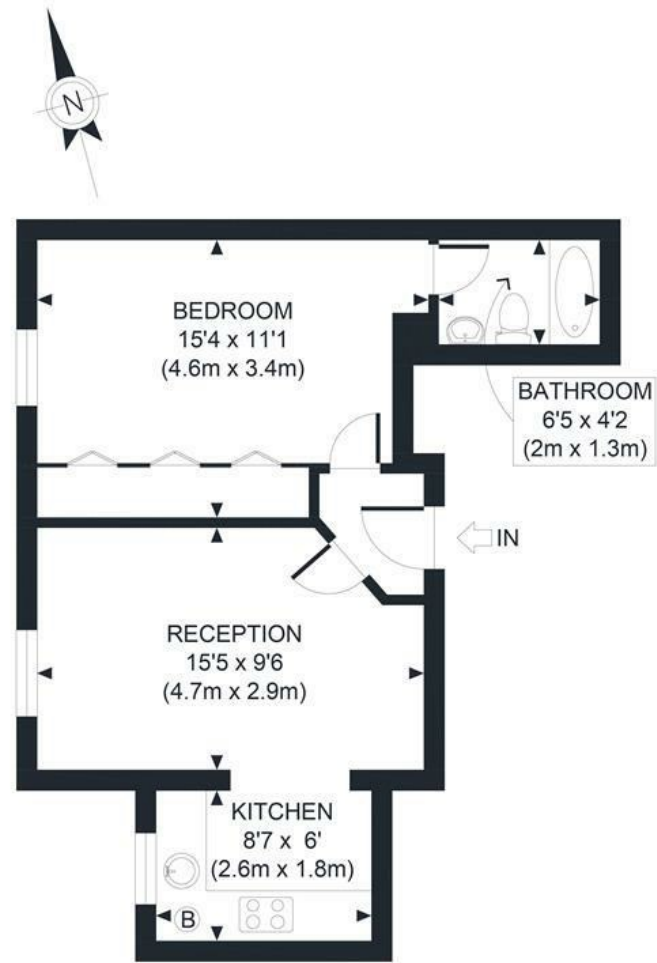


GUIDE PRICE £580,000

Nestled in the heart of Primrose Hill, this charming one-bedroom flat offers the perfect blend of character and modern convenience. With a recently refurbished kitchen, semi-open plan living, spacious double bedroom with large built-in wardrobes, and en-suite bathroom, this property has everything you need for a comfortable and stylish home.

The location is also unbeatable. Minutes from Primrose Hill, Regents Park, and Regents Canal, you'll have easy access to all the amenities you need and stunning views of the city. Camden Town and Chalk Farm tube stations are also within walking distance, making it easy to get around London.

If you're looking for a unique and stylish home in one of London's most desirable neighbourhoods, this one-bedroom flat is the perfect choice. Contact us today to arrange a viewing.



SECOND FLOOR
GROSS INTERNAL
FLOOR AREA 408 SQ FT

APPROX. GROSS INTERNAL FLOOR AREA 408 SQ FT / 38 SQM

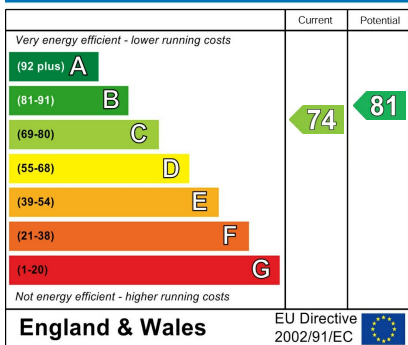
Ref: Copyright **photo**plan

Disclaimer: Floor plan measurements are approximate and are for illustrative purposes only. While we do not doubt the floor plan accuracy and completeness, you or your advisors should conduct a careful, independent investigation of the property in respect of monetary valuation

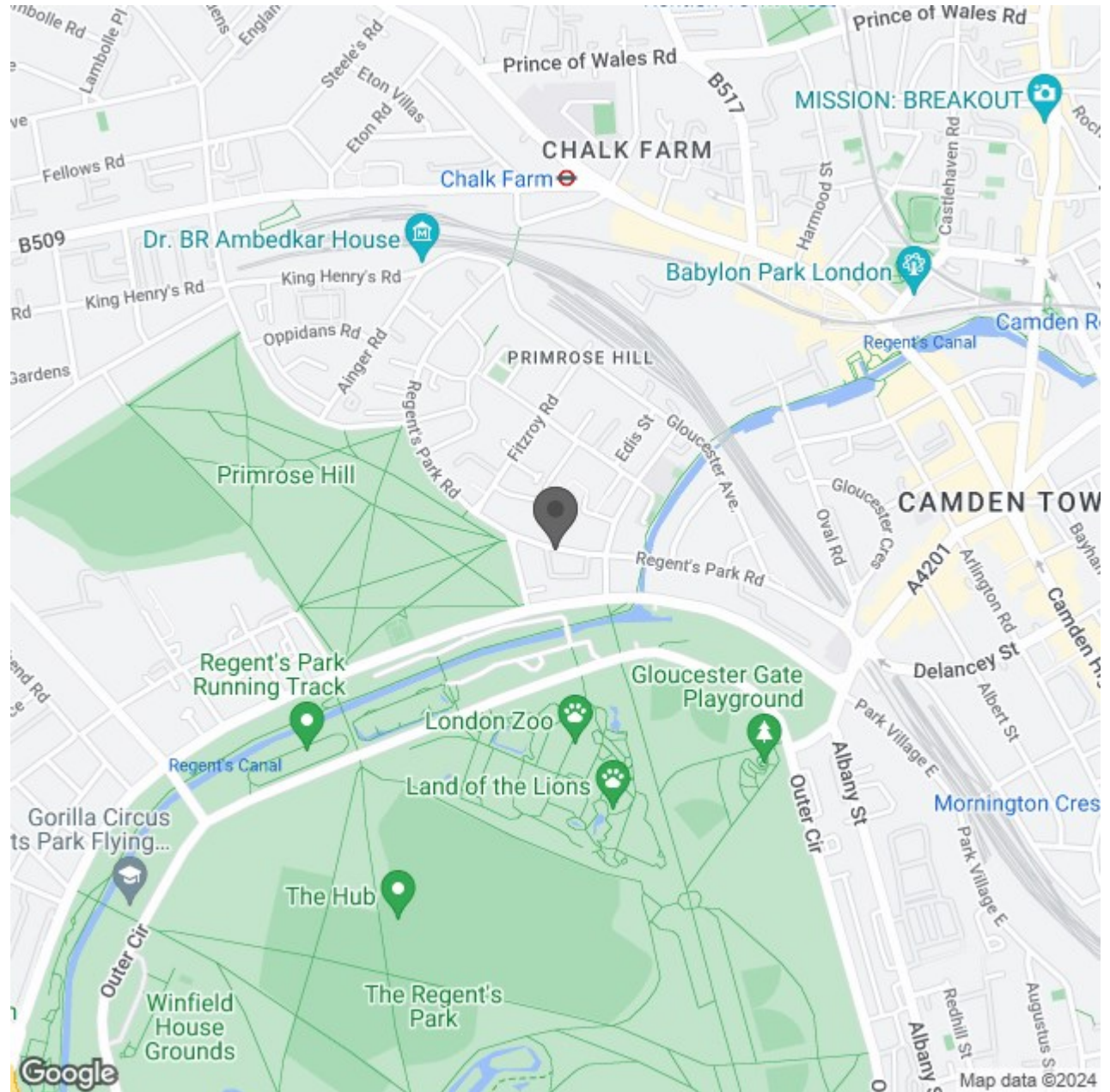
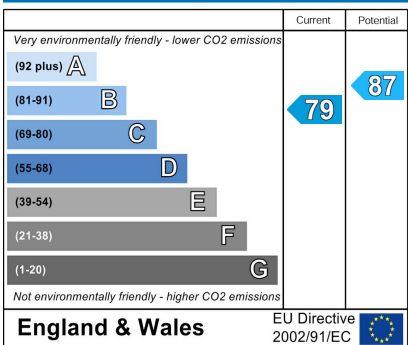
- Superb Village Location
- 120M to Primrose Hill
- 300M to The Regent's Park
- Idyllic Victorian Terrace
- Large Double Bedroom
- Excellent Built-In Wardrobes
- Recently Renovated Kitchen
- Gas Central Heating
- Wooden Flooring Throughout



Energy Efficiency Rating



Environmental Impact (CO₂) Rating



Red.