



Europa House | Randolph Avenue | London | W9

£3,955 Per week



Nestled in the heart of Maida Vale, this fantastic three-bedroom apartment on Randolph Avenue offers a unique blend of historic charm and modern living, spanning an impressive 1,646 square feet of living space.

As you step inside, you are greeted by a bright and airy reception room, where large windows frame beautiful views over the picturesque rooftops and private three acre garden below. The living area is further enhanced by a charming working fireplace with the well-appointed kitchen leading to a magnificent terrace.

Additionally, a second terrace is accessible from the living room, offering further outdoor space. This apartment is designed for comfort, featuring full air conditioning, private lift access, underground parking and 24-hour concierge service.

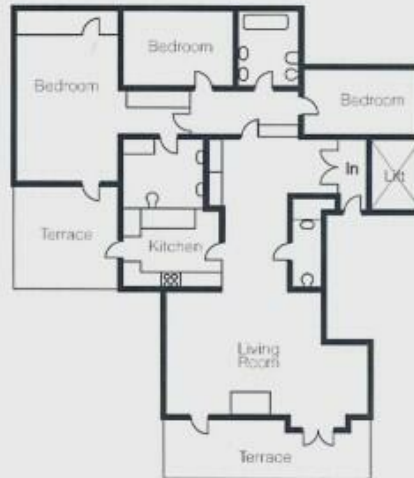
Europa House is located a short walk away from the open spaces of Paddington Recreation Ground and transport links of both Maida Vale and Warwick Avenue Underground Stations (Bakerloo Line), local shops, bus routes into the West End and within close proximity to the American School London (ASL).

- 3-bedroom, 2-bath apartment
- Dedicated 24-hour concierge and security
- Terrace with outdoor seating
- Private lift access
- Guest cloak room / washroom
- 1,646 sq ft of space
- All utilities included (this includes Council Tax)
- Working fireplace in living room
- Access to private gardens
- Underground parking available

Local Authority: Westminster
Council Tax Band: G
EPC: C
Tenancy Length: Long Term
Date Available: 2nd January 2026
£3,955 Per Week
Furnished

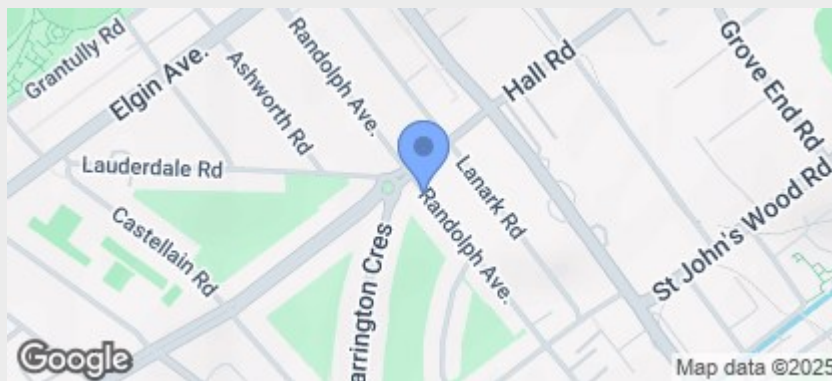






THREE BEDROOM PENTHOUSE
FOURTH FLOOR
1646 SQ FT / 153 SQ M

Please note that this is a sample floor plan and actual room layout may vary



Energy Efficiency Rating		
	Current	Potential
Very energy efficient - lower running costs		
(92 plus) A		
(81-91) B		
(69-80) C		
(55-68) D		
(39-54) E		
(21-38) F		
(1-20) G		
Not energy efficient - higher running costs		
England & Wales	76	80
	EU Directive 2002/91/EC	

24 Bristol Gardens, London W9 2JQ
hello@draperlondon.com
T: 0203 143 1900