



West Hampstead Mews | London | NW6

Guide price £550,000





Situated in the charming West Hampstead Mews, this delightful apartment offers a perfect blend of comfort and style. Spanning an impressive 710 square feet, the property features a well appointed reception room that serves as an inviting space for relaxation and entertaining. The sleeping area is generously sized, providing a tranquil retreat, while the bathroom is modern and functional, catering to all your daily needs.

The property benefits from planning permission to create a fabulous 2 bedroom apartment and the proposed floorplan is available on Camden Council's website Ref: 2025/2539P

West Hampstead is renowned for its vibrant community and excellent transport links, making it an ideal location for both professionals and families alike. The area boasts a variety of local amenities, including shops, cafes, and restaurants, all within easy reach. The picturesque mews setting adds a unique charm, providing a peaceful escape from the hustle and bustle of city life.

- Manhattan studio apartment with planning permission to create a 2 bedroom apartment.
- Spacious reception room
- Close to local amenities
- Ideal for a home or investment/ development
- Easy access to transport
- Modern bathroom suite
- Located in West Hampstead
- 710 sq ft of living space
- Quiet mews location
- Viewing highly recommended

Local Authority: Camden  
Council Tax Band: D  
EPC: C  
Tenure: Freehold

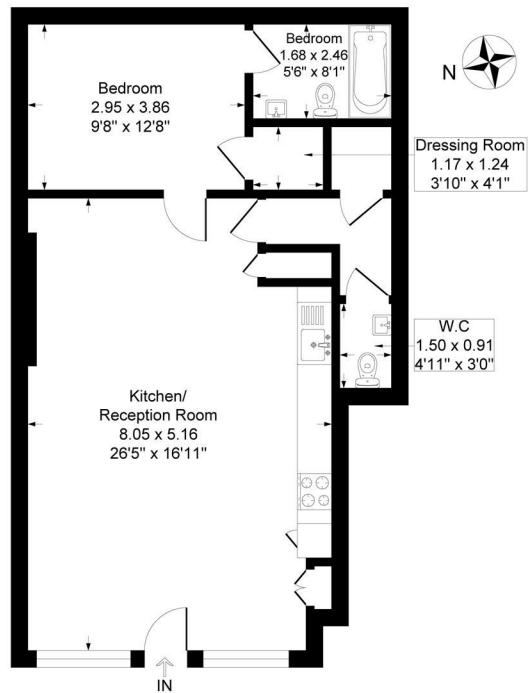






## West Hampstead Mews, London NW6

Approximate Gross Internal Floor Area = 66.8 sq m / 720 sq ft

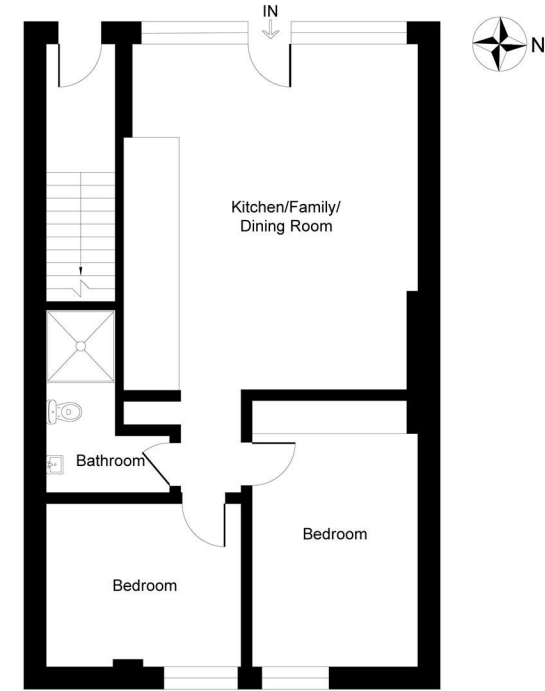


Ground Floor

Illustration for identification purposes only, measurements are approximate, not to scale.

Existing Floorplan

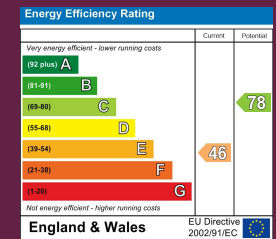
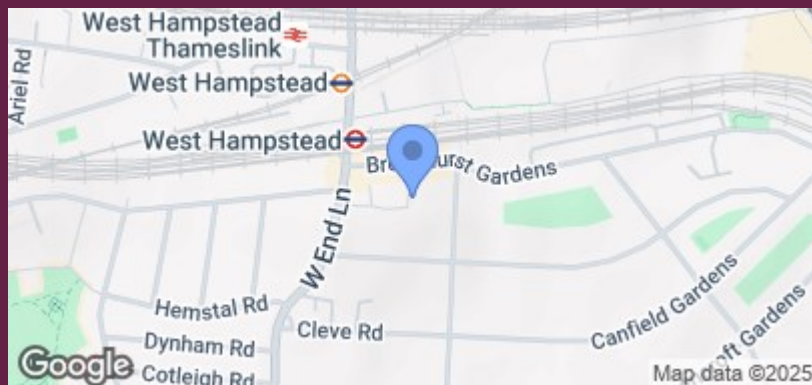
## West Hampstead Mews, London NW6



Ground Floor

Illustration for identification purposes only, measurements are approximate, not to scale.

Proposed Floorplan



24 Bristol Gardens, London W9 2JQ  
hello@draperlondon.com