



Corn Mill, Ottery St Mary. EX11

Guide Price £295,000

2 1 1



Discover modern living with historic charm in this stunning ground floor flat, set within a beautifully renovated former mill. Fully modernised throughout, the property retains characterful original exposed wooden beams, adding warmth and rustic appeal.

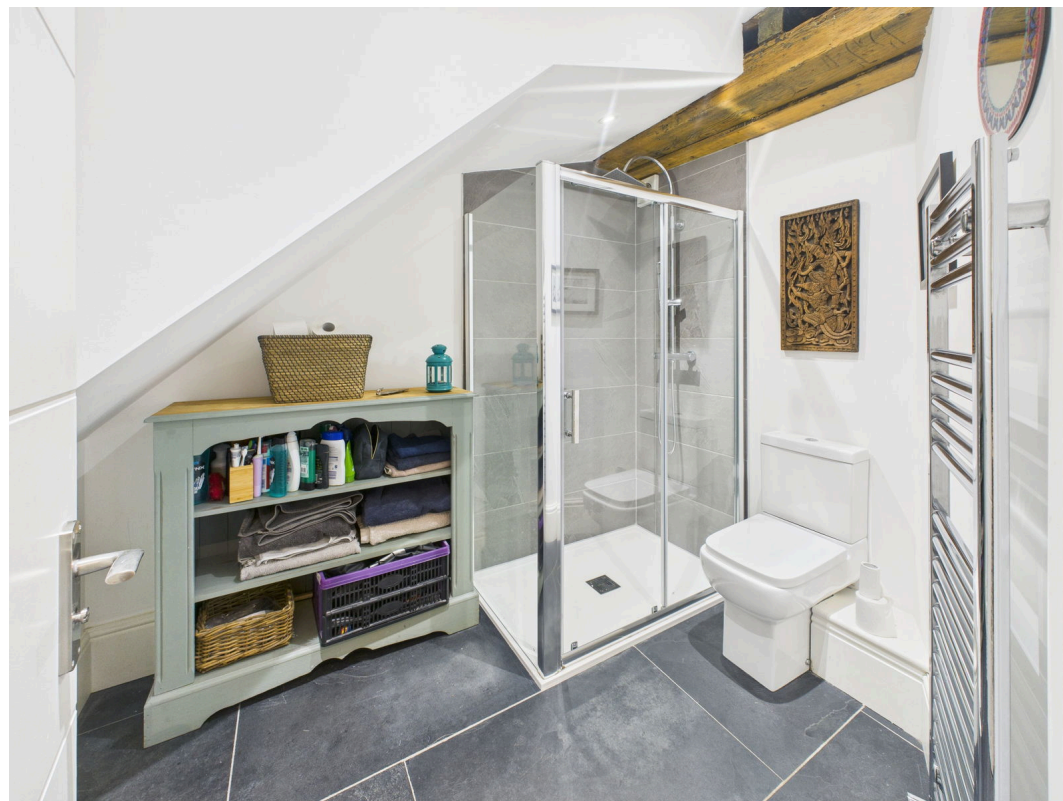
The spacious living, dining, and kitchen areas are laid out in an elegant open-plan design, creating a bright and welcoming space ideal for both relaxing and entertaining. The kitchen comes equipped with a full range of modern appliances, complementing the contemporary finish.

The main bedroom benefits from its own en-suite shower room, and the flat also features gas central heating and double glazing throughout for year-round comfort and efficiency.

Outside, you'll enjoy allocated parking and a secluded rear garden offering picturesque views over the tumbling weir - an idyllic place to unwind.

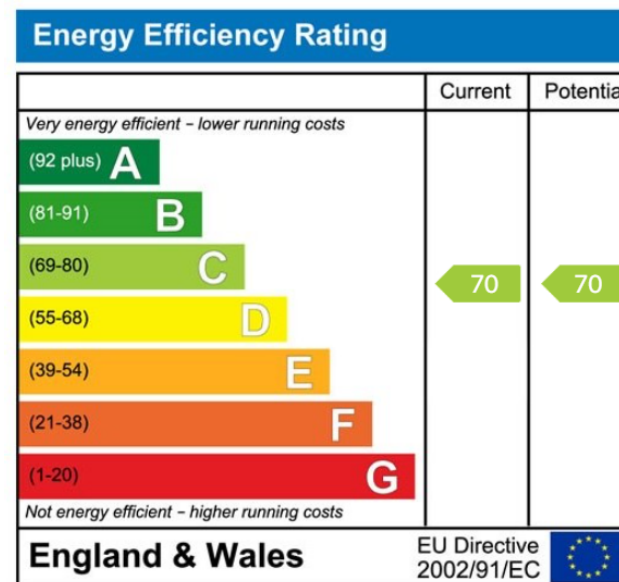
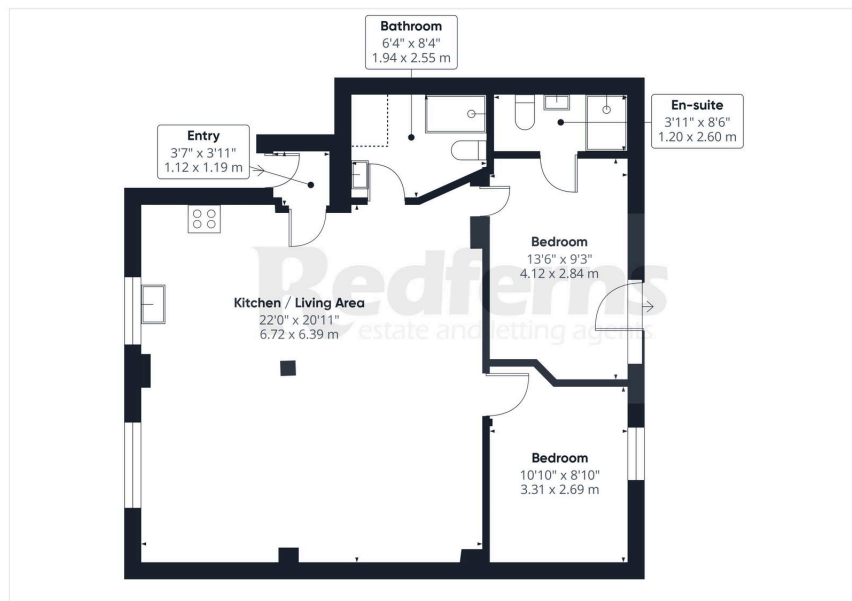
This exceptional flat offers a rare opportunity to enjoy tranquil surroundings with character and convenience combined.

Early viewing is highly recommended.





- Two bedrooms
- Fully fitted kitchen
- Secluded rear garden
- Gas central heating
- EPC Rating -
- Open plan living area
- Modern family shower room
- Allocated parking
- Double glazing
- Council Tax Band -



Ottery St. Mary
Exeter
Sidmouth

01404 814 306
01392 984 511
01395 512 544

www.redfernproperty.co.uk | sales@redfernproperty.co.uk

