



Fursecroft,
George Street, W1H

£2,950 Per Week,

NAPIER WATT

T: 0207 935 0011
E: enquiries@napierwatt.co.uk
W: napierwatt.co.uk

35 Berkeley Square, Mayfair, London, W1J 5BF







Description

A stunning, 8th floor apartment offering 1,681sq ft / 156 sqm of accommodation laid out with four - five bedroom, four bathrooms and a magnificent terrace 450 sqft 37 sqm that wraps around the apartment.

The building has just been fully modernized with new communal areas and luxuries porters reception area.

Fursecroft is a popular portered block in Marylebone with ease of shopping access to nearby Oxford Street. Nearest tube stations is Marble Arch.

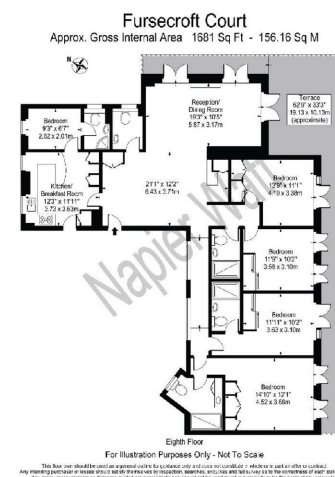
Westminster Council tax band G. EPC Rating D.

Key Features

- LARGE TERRACE
- 24 HOUR PORTER
- LONG LET
- 8TH FLOOR WITH LIFT
- LUXURY COMMUNAL AREAS
- AIR CONDITIONING

Terms

Fees & Charges: Tenancies exceeding £100,000 Per annum £480 inc VAT, Tenancies where a company is a tenant £480 Inc VAT.



IMPORTANT: We would inform prospective purchasers that these sales particulars have been prepared as a general guide only. A detailed survey has not been carried out, nor the services, appliances and fittings tested. Room sizes should not be relied upon for furnishing purposes and are approximate. If floor plans are included, they are for guidance only and illustration purposes only and may not be to scale. If there are any important matters likely to affect your decision to buy, please contact us before viewing the property.