



77 South Audley Street,
Mayfair, W1K

£13,500 Per Week,

NAPIER WATT

T: 0207 935 0011

E: enquiries@napierwatt.co.uk

W: napierwatt.co.uk

35 Berkeley Square, Mayfair, London, W1J 5BF







Description

Stunning five-bedroom duplex apartment in this exclusive developments in Mayfair. With only seven apartment in the block, this sought-after building boasts it's own indoor swimming pool, gym and spa facilities. No expense has been spared on the interior from the superb fixtures to the lavish furnishings. The apartment of approximately 3,877sq ft (360sq m) is set on laid out over the ground and lower ground. The entrance floor comprises a spectacular living room with a generously-sized dining area and bar, family media room, vast eat-in kitchen and guest cloakroom. The magnificent staircase leads down to the bedrooms and a utility area. The sizable master bedroom has a beautifully presented walk-in wardrobe, en-suite bathroom with shower and his and hers sinks. The second bedroom also benefits from a dressing room and en-suite shower room. The remaining bedrooms are all en-suite and four of the five have access to a wrap-around patio. There is also a separate studio, ideal for staff. Available, furnished.

5 Bedrooms : 5 Bathrooms : Studio : Guest Cloakroom : Swimming Pool : Gym : Spa : Air-Conditioning : 24-Hour Concierge : EPC rating C

Key Features

- 24-HOUR CONCEIRGE
- SWIMMING POOL
- 5 BEDS, 5 BATHS
- SEPARATE STUDIO
- AIR-CONDITIONING
- GYM
- GUEST CLOAKROOM

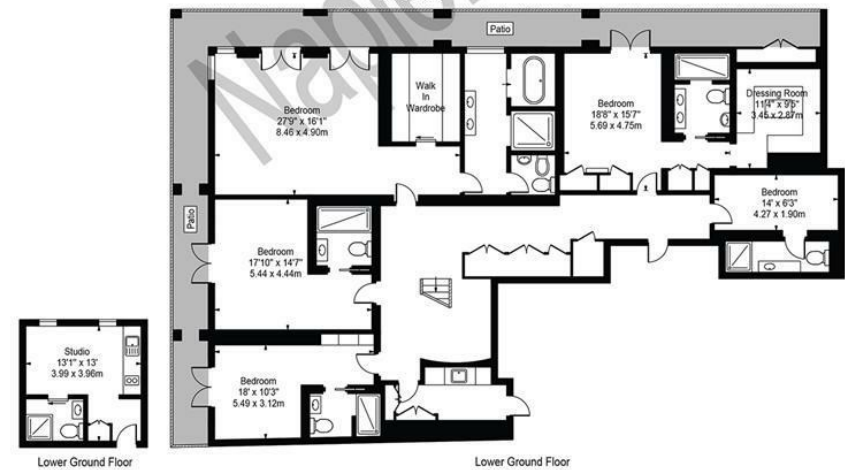
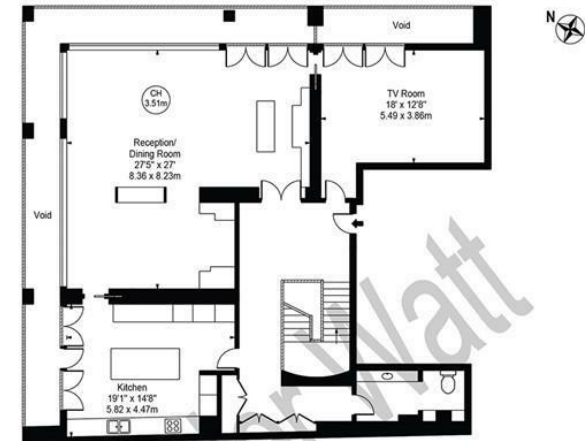
Terms

Fees & Charges: Tenancies exceeding £100,000 Per annum £480 inc VAT, Tenancies where a company is a tenant £480 Inc VAT.

South Audley Street, W1K 1JG

Approx. Gross Internal Area 3877 Sq Ft - 360.19 Sq M
(Excluding Studio)

Approx. Gross Internal Area Of Studio 170 Sq Ft - 15.80 Sq M



For Illustration Purposes Only - Not To Scale

This floor plan should be used as a general outline for guidance only and does not constitute in whole or in part an offer or contract. Any intending purchaser or lessee should satisfy themselves by inspection, searches, enquiries and full survey as to the correctness of each statement. Any areas, measurements or distances quoted are approximate and should not be used to value a property or be the basis of any sale or let.

IMPORTANT: We would inform prospective purchasers that these sales particulars have been prepared as a general guide only. A detailed survey has not been carried out, nor the services, appliances and fittings tested. Room sizes should not be relied upon for furnishing purposes and are approximate. If floor plans are included, they are for guidance only and illustration purposes only and may not be to scale. If there are any important matters likely to affect your decision to buy, please contact us before viewing the property.