



Fitzrovia Apartments, 50 Bolsover Street,
Fitzrovia, W1W

Asking Price £1,700,000, Leasehold

NAPIER WATT

T: 0207 935 0011
E: enquiries@napierwatt.co.uk
W: napierwatt.co.uk

35 Berkeley Square, Mayfair, London, W1J 5BF







Description

An exceptional three bedroom apartment situated on the sixth floor of a prestigious building in the heart of Fitzrovia.

The apartment is presented in excellent condition and comprises a spacious, open-plan reception room with a fully fitted kitchen and a door leading out to a delightful balcony. Each of the three bedrooms features built-in storage and access to the balcony, with the master also including an en suite bathroom. The property further benefits from a car parking space, a modern heating system turned on from within the room or via the porter, wooden flooring and large windows, allowing plenty of natural light throughout. Fitzrovia apartments is a popular apartment block with 24-hour concierge and a communal garden. It is excellently located with easy access to the fashionable shops and restaurants of Marylebone, the West End, Oxford Street and Regent Street.

EPC Rating C. Westminster Council Tax Band G.

Key Features

- COMFORT COOLING
- LIFT
- VIEWS OVER FITZROVIA
- SECURE PARKING
- CONCIERGE
- BALCONY
- EASY REGENTS PARK

Terms

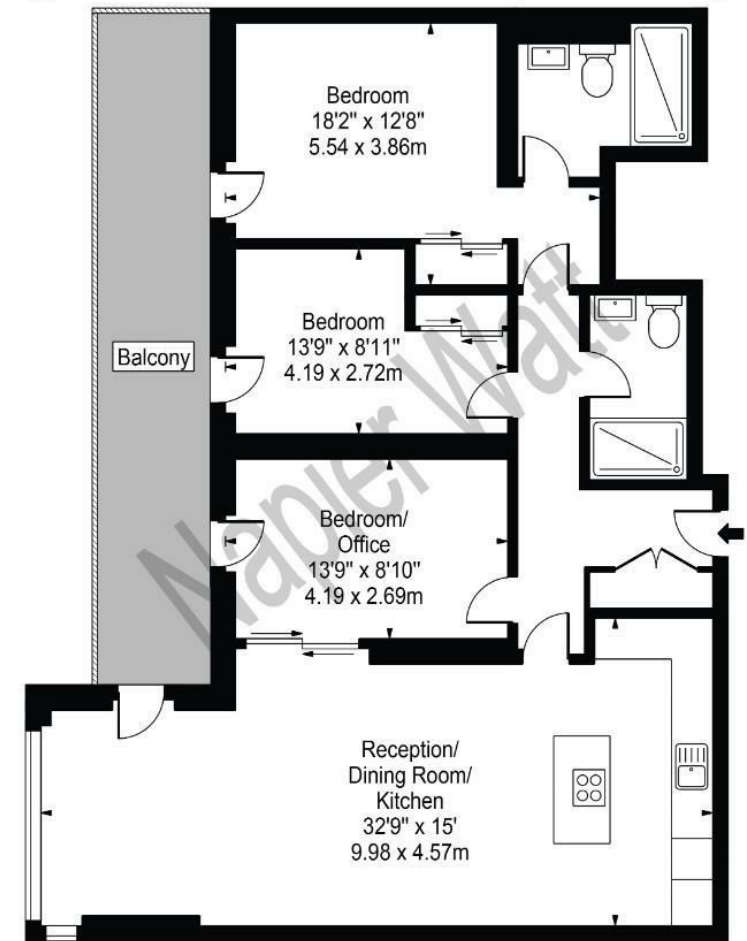
Leasehold : From 1 February 2010 expiring on 31 January 2135 Leasehold: 110 Years Remaining.

Council Tax : Westminster Band G

Service Charge: £15,000 per annum

Fitzrovia Apartments

Approx. Gross Internal Area 1075 Sq Ft - 99.87 Sq M



Sixth Floor

For Illustration Purposes Only - Not To Scale

This floor plan should be used as a general outline for guidance only and does not constitute in whole or in part an offer or contract. Any intending purchaser or lessee should satisfy themselves by inspection, searches, enquiries and full survey as to the correctness of each statement. Any areas, measurements or distances quoted are approximate and should not be used to value a property or be the basis of any sale or let.

IMPORTANT: We would inform prospective purchasers that these sales particulars have been prepared as a general guide only. A detailed survey has not been carried out, nor the services, appliances and fittings tested. Room sizes should not be relied upon for furnishing purposes and are approximate. If floor plans are included, they are for guidance only and illustration purposes only and may not be to scale. If there are any important matters likely to affect your decision to buy, please contact us before viewing the property.