



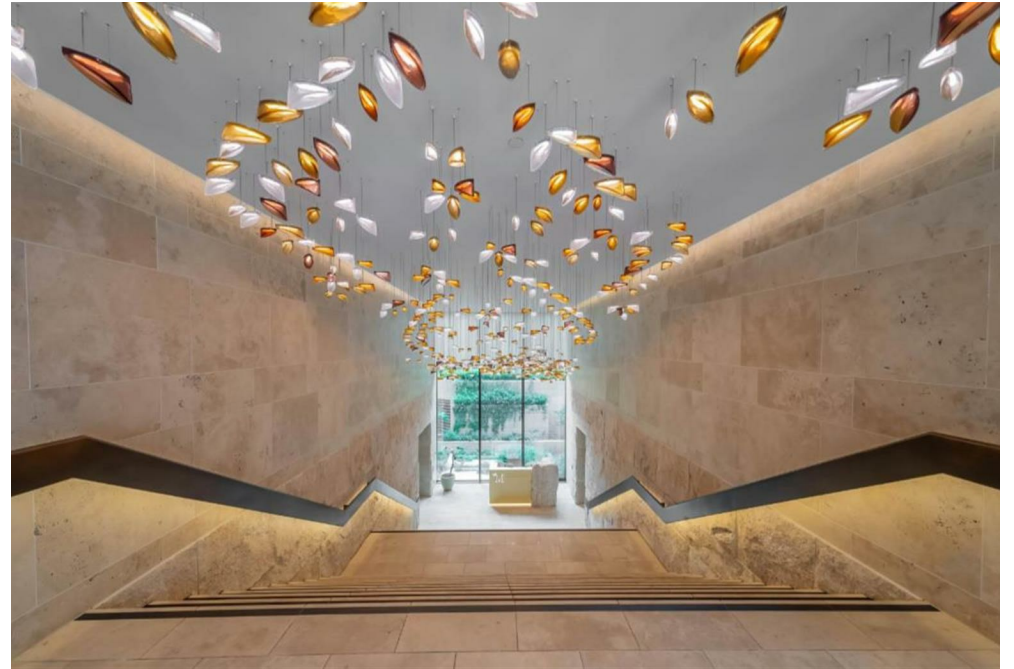
The Mansion, 9 Marylebone Lane,
Marylebone, W1U

£6,500 Per Week,

NAPIER WATT

T: 0207 935 0011
E: enquiries@napierwatt.co.uk
W: napierwatt.co.uk

35 Berkeley Square, Mayfair, London, W1J 5BF







Description

This stunning, lateral three-bedroom apartment is set in one of Marylebone's newest developments. Residents benefit from access to fantastic leisure facilities including a swimming pool, spa and gym, not to mention the grand entrance foyer, 24-hour concierge and lifts. The opulent finishes throughout the building carries through to this third floor apartment (with lift), which comprises a vast living room, with dining area, open plan kitchen, master suite with walk in wardrobe and en-suite bathroom. The second and third bedrooms also boast good built-in storage and en-suite bathrooms. This development is in the heart of Marylebone, one of London's most desirable and fashionable areas. With a wealth of boutique shops, restaurants and bars at your doorstep, this secure development would be ideal for both families and bachelors. Available, furnished.

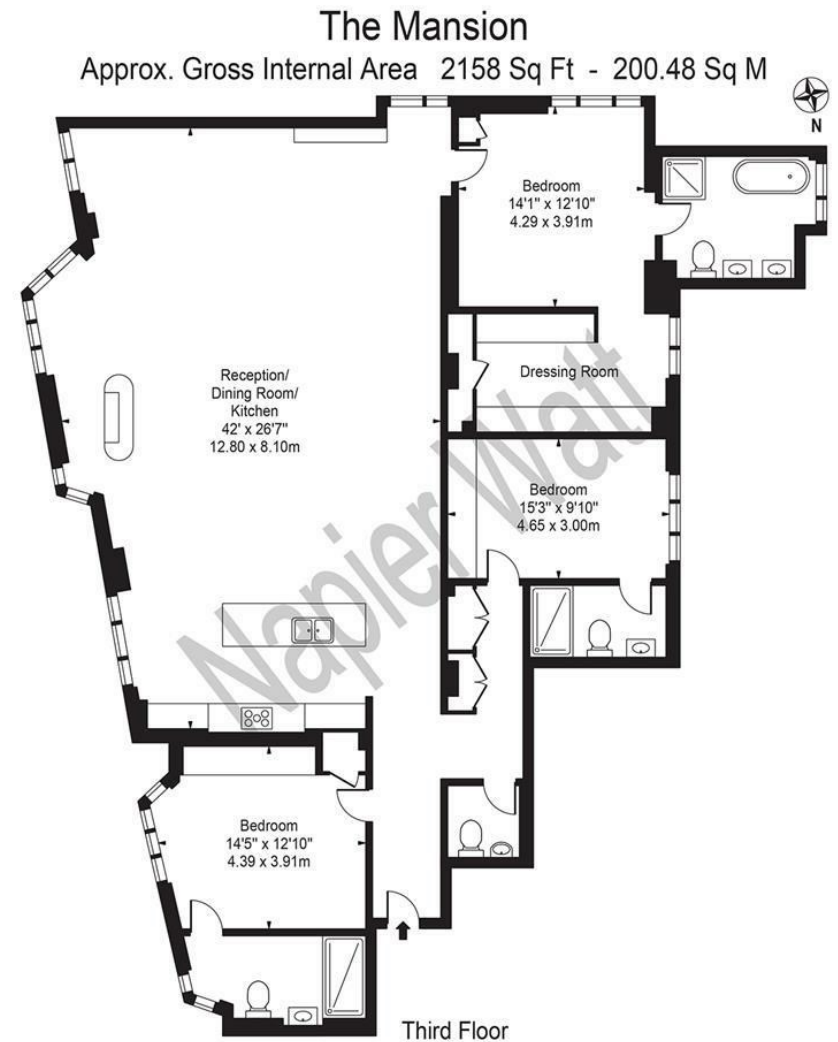
3 Bedrooms : 3 Bathrooms : Guest W.C. : Swimming Pool : Gym : Spa : 24-Hour Concierge : AC : Lift : Westminster Council Tax Band H : EPC Rating C

Key Features

- STUNNING THREE BED
- 24-HOUR CONCIERGE
- SWIMMING POOL
- GYM
- PASSENGER LIFT

Terms

Fees & Charges: Tenancies exceeding £100,000 Per annum £480 inc VAT, Tenancies where a company is a tenant £480 Inc VAT.



For Illustration Purposes Only - Not To Scale

This floor plan should be used as a general outline for guidance only and does not constitute in whole or in part an offer or contract. Any intending purchaser or lessee should satisfy themselves by inspection, searches, enquiries and full survey as to the correctness of each statement. Any areas, measurements or distances quoted are approximate and should not be used to value a property or be the basis of any sale or let.

IMPORTANT: We would inform prospective purchasers that these sales particulars have been prepared as a general guide only. A detailed survey has not been carried out, nor the services, appliances and fittings tested. Room sizes should not be relied upon for furnishing purposes and are approximate. If floor plans are included, they are for guidance only and illustration purposes only and may not be to scale. If there are any important matters likely to affect your decision to buy, please contact us before viewing the property.