



Chelsea Creek Tower 12 Park Street, Chelsea Creek, SW6

Asking Price £2,650,000, Leasehold







Description

Offering breath-taking views of the iconic London skyline, this is an exquisite lateral apartment on the 8th floor of the renowned Chelsea Creek Tower. The apartment comprises of a spectacular living space along with a terrace and kitchen with entertaining area. There are three double bedrooms, two of which come with en suites.

The apartment is presented in immaculate condition and could be moved into straight away. Chelsea Creek Tower forms part of the prestigious Chelsea Creek development. With views over The River Thames and central London, Chelsea Creek Tower is excellently positioned for easy access to Heathrow, Central London and the vast array of amenities to be found on The Kings Road and in central Chelsea. The development itself benefits from a 24 hr concierge and use of Chelsea Creek Health and Fitness Centre which offers an indoor Swimming Pool, Sauna, Steam Room, Gym and Treatment Room.

EPC B

Key Features

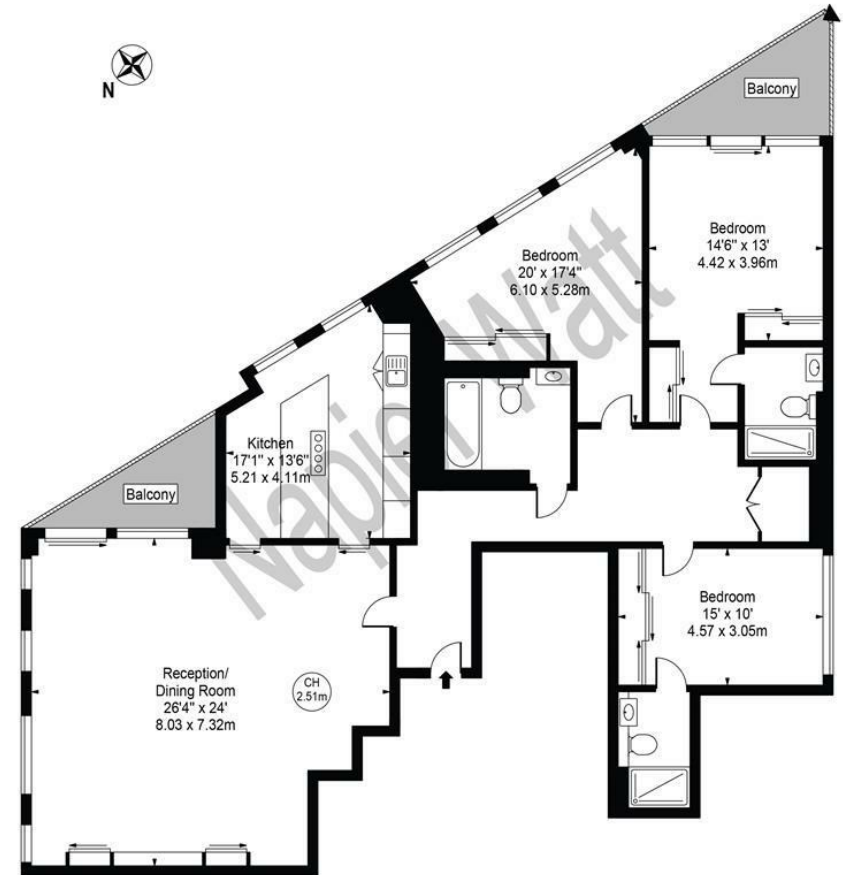
- SECURE UNDERGROUND PARKING
- EIGHTH FLOOR
- STORAGE ROOM BY SEPERATE NEG
- SWIMMING ROOM
- LIFTS
- EXCELLENT CONDITION
- TWO BALCONIES
- STEAM AND SAUNA FACILITIES

Terms

Leasehold 987 years (999 years from 1 June 2010)
Secure Underground Parking For One Car
Service Charge : £13,996 pa
Ground Rent : £550 pa
EPC B Council Tax Hammersmith and Fulham Band H

Chelsea Creek Tower

Approx. Gross Internal Area 1833 Sq Ft - 170.29 Sq M



Eighth Floor
For Illustration Purposes Only - Not To Scale

This floor plan should be used as a general outline for guidance only and does not constitute in whole or in part an offer or contract. Any intending purchaser or lessee should satisfy themselves by inspection, searches, enquiries and full survey as to the correctness of each statement. Any areas, measurements or distances quoted are approximate and should not be used to value a property or be the basis of any sale or let.

IMPORTANT: We would inform prospective purchasers that these sales particulars have been prepared as a general guide only. A detailed survey has not been carried out, nor the services, appliances and fittings tested. Room sizes should not be relied upon for furnishing purposes and are approximate. If floor plans are included, they are for guidance only and illustration purposes only and may not be to scale. If there are any important matters likely to affect your decision to buy, please contact us before viewing the property.