



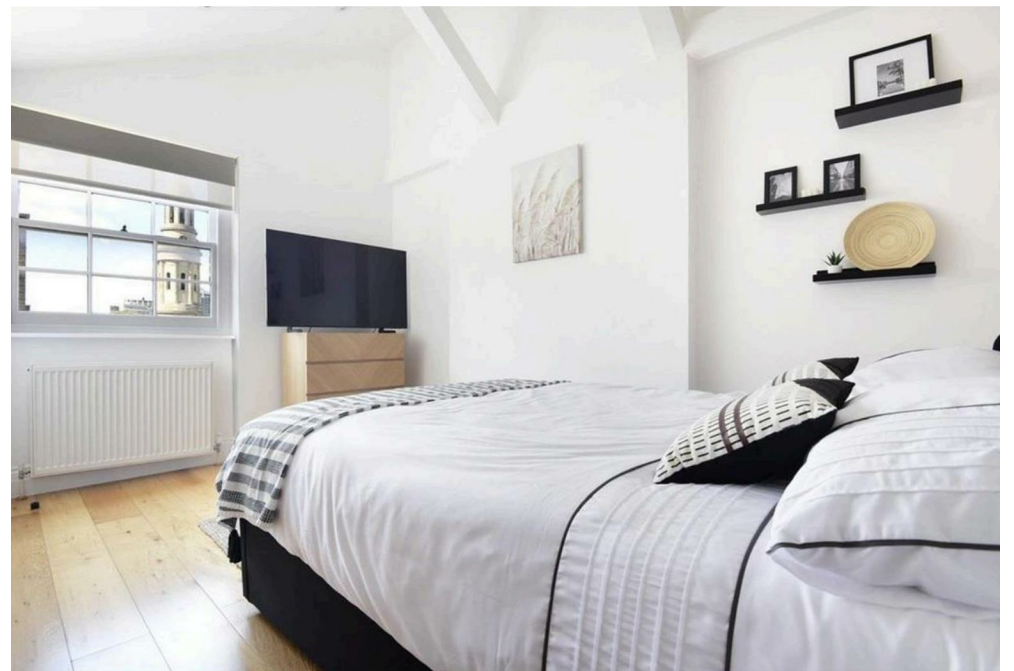
25, Upper Montagu Street,  
Marylebone, W1H

£1,500 Per Week,

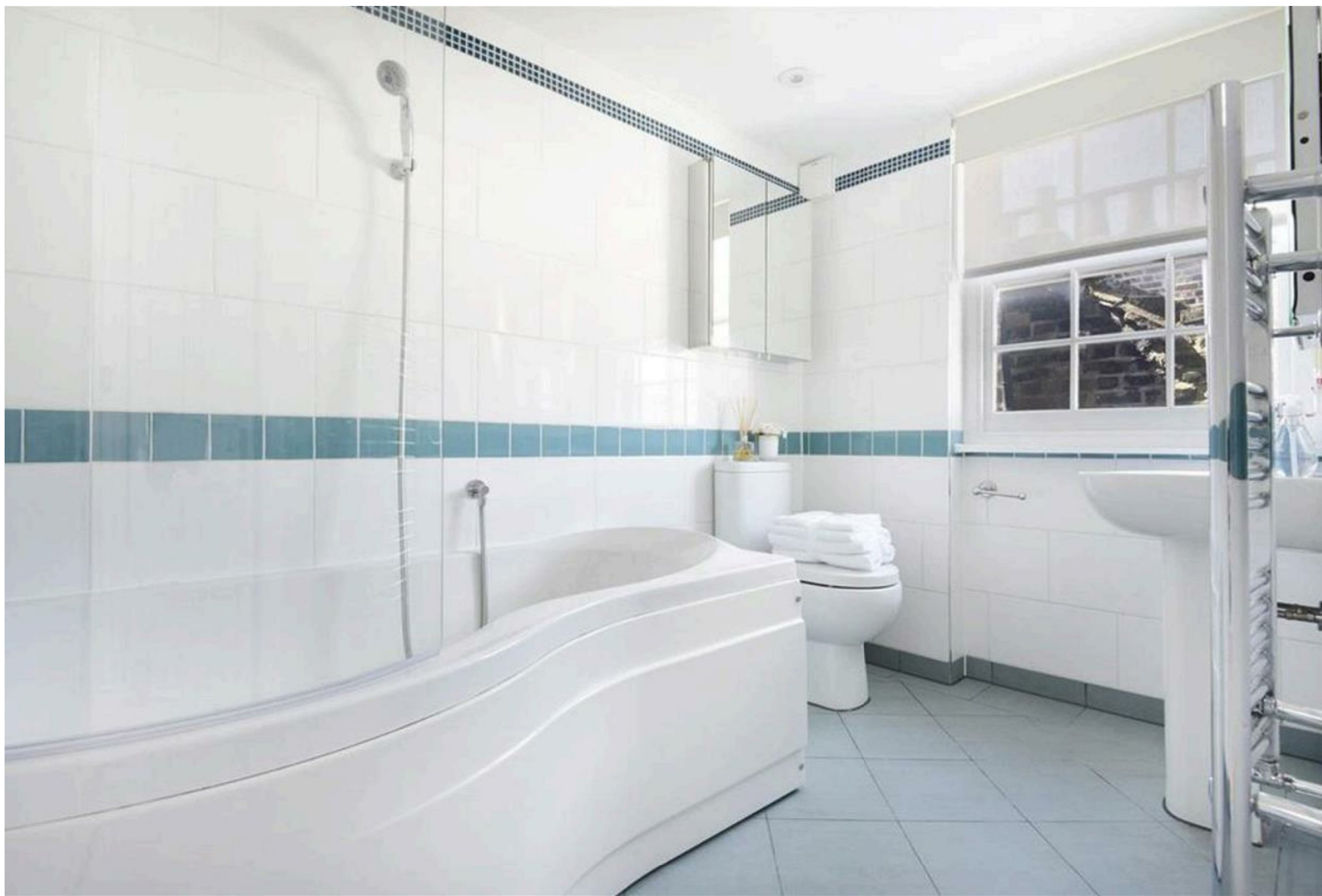
NAPIER WATT

T: 0207 935 0011  
E: [enquiries@napierwatt.co.uk](mailto:enquiries@napierwatt.co.uk)  
W: [napierwatt.co.uk](http://napierwatt.co.uk)

35 Berkeley Square, Mayfair, London, W1J 5BF









## Description

A three-bedroom, two-bathroom furnished apartment is available to rent on Upper Montagu Street. The property includes a modern kitchen/breakfast room, a spacious reception room, three bedrooms and two bathrooms. Upper Montagu Street is known for its Georgian architecture and quiet, tree-lined setting, offering a balance of period character and modern convenience. The location provides easy access to Regent's Park and Baker Street, with Baker Street Station and Marylebone Station both approximately 0.3 miles away.

3 Bedrooms : 2 Bathrooms : Council Tax Westminster Band E : EPC Rating C

## Key Features

- WELL-PRESENTED
- HEART OF MARYLEBONE
- WOODEN FLOORING
- CLOSE TO TRASPORT LINKS

## Terms

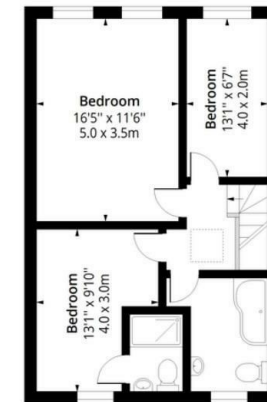
Fees & Charges: Tenancies exceeding £100,000 Per annum £480 inc VAT, Tenancies where a company is a tenant £480 Inc VAT.

## Upper Montagu Street, W1H

Approx. Gross Internal Area 1058 Sq Ft - 98.29 Sq M



Floor Area 494 Sq Ft - 45.89 Sq M



Floor Area 564 Sq Ft - 52.40 Sq M



IMPORTANT: We would inform prospective purchasers that these sales particulars have been prepared as a general guide only. A detailed survey has not been carried out, nor the services, appliances and fittings tested. Room sizes should not be relied upon for furnishing purposes and are approximate. If floor plans are included, they are for guidance only and illustration purposes only and may not be to scale. If there are any important matters likely to affect your decision to buy, please contact us before viewing the property.