



55, Ebury Street,
, SW1W

Asking Price £2,350,000, Leasehold

NAPIER WATT

T: 0207 935 0011
E: enquiries@napierwatt.co.uk
W: napierwatt.co.uk

35 Berkeley Square, Mayfair, London, W1J 5BF







Description

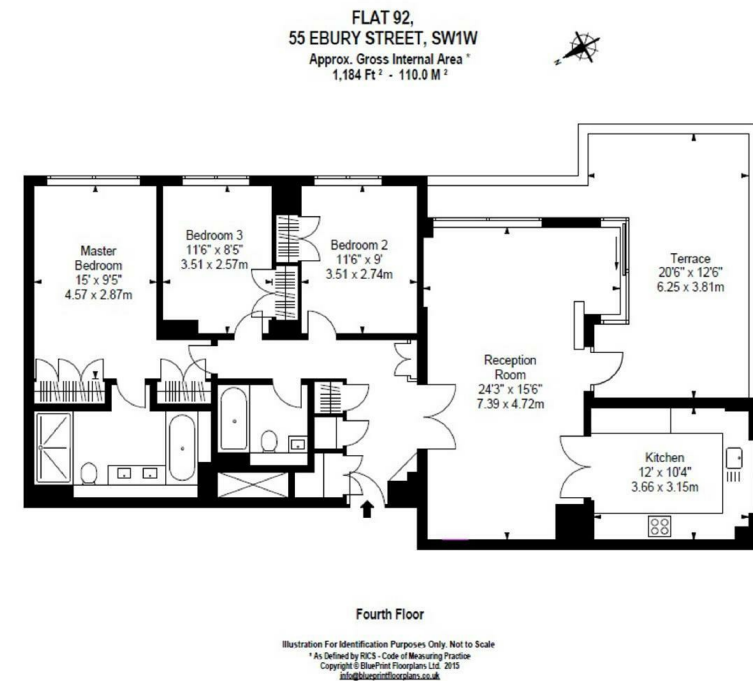
One of the most beautifully presented apartments we have seen of this type and size. It has been carefully and elegantly interior designed to a very high standard and comprises 1,184 sqft /110 sqm of accommodation with an additional large 240 sqft /22.3sqm private terrace. Internally there are three bedrooms, 2 bathrooms (1 ensuite) wonderful double aspect reception room with access to a large private roof terrace and luxury fully fitted kitchen. Internally the flat is in perfect condition.

Key Features

Terms

Leasehold: 165 Years, Expires 9 December 2190

Service Charge: Approx. £11,664 PA Including Sinking Fund 1.083% of the overall Westminster Band G



IMPORTANT: We would inform prospective purchasers that these sales particulars have been prepared as a general guide only. A detailed survey has not been carried out, nor the services, appliances and fittings tested. Room sizes should not be relied upon for furnishing purposes and are approximate. If floor plans are included, they are for guidance only and illustration purposes only and may not be to scale. If there are any important matters likely to affect your decision to buy, please contact us before viewing the property.