



71, Portland Place,
Marylebone, W1B

£9,000 Per Month,

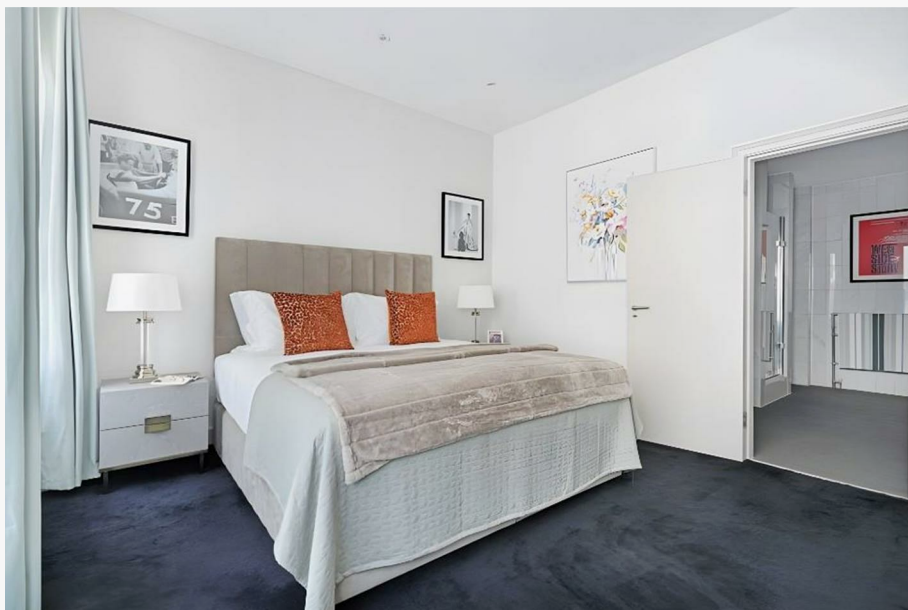
NAPIER WATT

T: 0207 935 0011
E: enquiries@napierwatt.co.uk
W: napierwatt.co.uk

35 Berkeley Square, Mayfair, London, W1J 5BF







Description

A three bedroom duplex apartment on the ground and lower ground floors of a smart, period building located on the corner of Portland Place and Devonshire Street. This beautiful duplex apartment has been tastefully redecorated throughout and provides plenty of natural light through large, south west facing windows. Comprising of three bedrooms, kitchen and dining room, two reception rooms and three bathrooms. There is also access to a large patio garden.

3 Bedrooms : 3 Bathrooms : 3 Reception Rooms : Well-Equipped Kitchen : Wooden Floors:
Council Tax Band H : EPC Rating D

Key Features

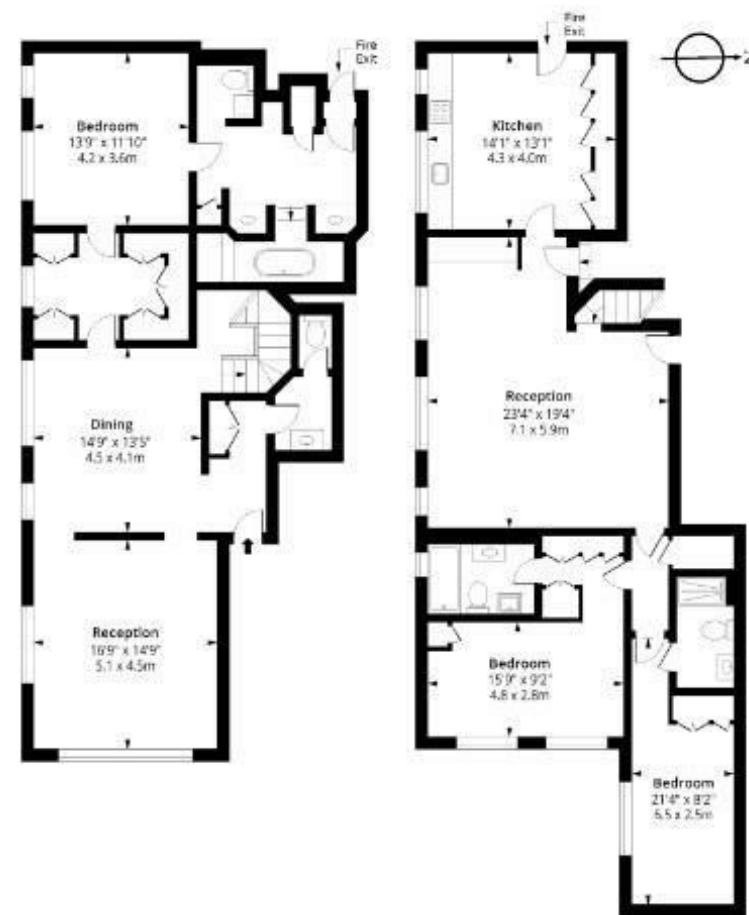
- PATIO GARDEN
- CARETAKER
- FURNISHED
- SHORT WALK FROM OXFORD CIRCUS

Terms

Fees & Charges: Tenancies exceeding £100,000 Per annum £480 inc VAT, Tenancies where a company is a tenant £480 Inc VAT.

Portland Place, W1B

Approx. Gross Internal Area 2274 Sq Ft - 211.25 Sq M



Floor Area 1128 Sq Ft - 104.79 Sq M

Floor Area 1146 Sq Ft - 106.46 Sq M

IMPORTANT: We would inform prospective purchasers that these sales particulars have been prepared as a general guide only. A detailed survey has not been carried out, nor the services, appliances and fittings tested. Room sizes should not be relied upon for furnishing purposes and are approximate. If floor plans are included, they are for guidance only and illustration purposes only and may not be to scale. If there are any important matters likely to affect your decision to buy, please contact us before viewing the property.