



The Galleries, 9 Abbey Road,
, NW8

£1,100 Per Week,

NAPIER WATT

T: 0207 935 0011
E: enquiries@napierwatt.co.uk
W: napierwatt.co.uk

35 Berkeley Square, Mayfair, London, W1J 5BF







Description

Napier Watt are delighted to offer this stunning two double bedroom first floor furnished apartment situated in this prestigious contemporary secure development next to the world-famous Abbey Studios and moments from St Johns Wood. The property briefly comprises communal front entrance with 24 hour portered desk and lift service to all floors. The property further benefits from two spacious storage cupboards in the entrance hallway, stylish tiled flooring, bright and spacious reception dining with solid wood flooring opening onto a spacious winter balcony, a contemporary open plan fully fitted kitchen with integrated appliances including a large fridge / freezer, electric oven & hob, full size dishwasher and washing machine. The property comprises a master bedroom with en-suite bathroom, a second spacious double bedroom, stylish family bathroom, air conditioning throughout, and allocated underground parking space.

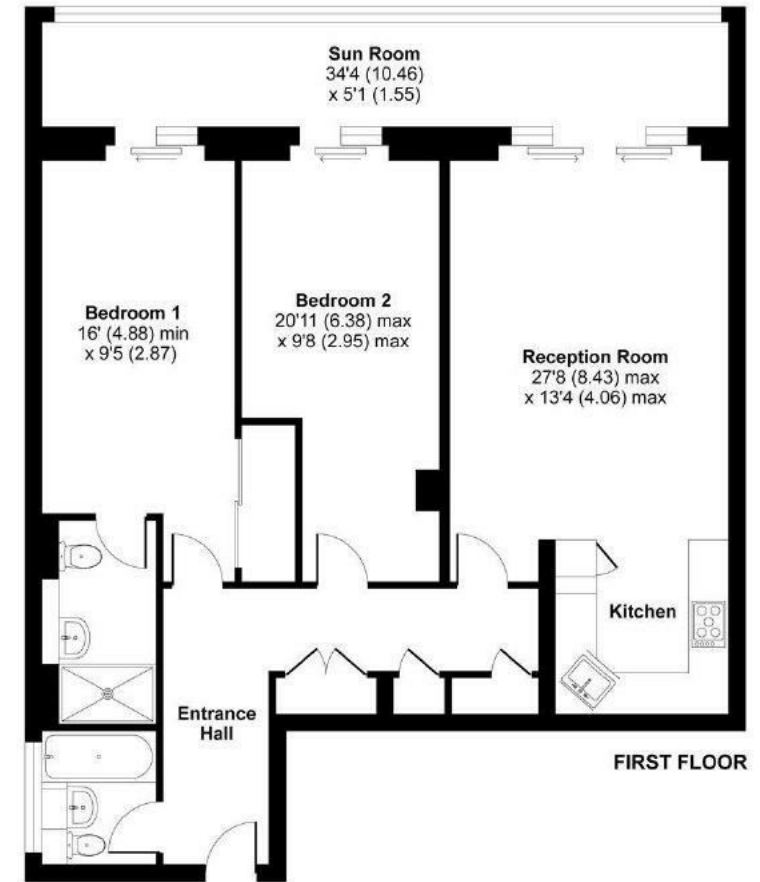
2 Bedrooms : 2 Bathrooms : Porter : Lift : AC : Winter Garden : Underground Parking : Council Tax Westminster G : EPC Rating B

Key Features

- AIR CONDITIING
- WINTER BALCONY
- PASSENGER LIFT
- PORTER
- UNDERGROUND PARKING

Terms

Fees & Charges: Tenancies exceeding £100,000 Per annum £480 inc VAT, Tenancies where a company is a tenant £480 Inc VAT.



IMPORTANT: We would inform prospective purchasers that these sales particulars have been prepared as a general guide only. A detailed survey has not been carried out, nor the services, appliances and fittings tested. Room sizes should not be relied upon for furnishing purposes and are approximate. If floor plans are included, they are for guidance only and illustration purposes only and may not be to scale. If there are any important matters likely to affect your decision to buy, please contact us before viewing the property.